

WICHITA, KANSAS

# RNAV (GPS) RWY 1R

APCH CRS	Rwy Idg	<b>12,007</b>
<b>005°</b>	TDZE	<b>1347</b>
	Arpt Elev	<b>1372</b>

AL-453 (USAF)

MC CONNELL AFB (KIAB)

**V** \* When ALS inop, increase CAT AB RVR to 55, vis to 1 mile;  
 CAT CDE RVR to 60, vis to 1 1/8 miles,  
 \*\* Circling not authorized west of Rwy 1L-19R.

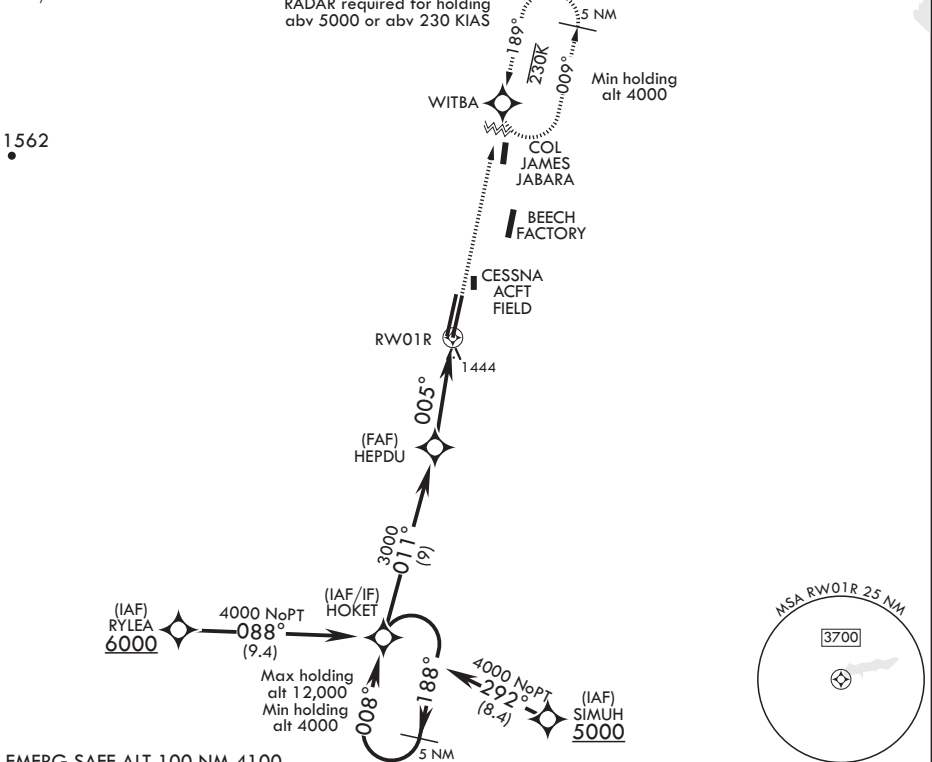


**MISSED APPROACH:** Climbing right turn to 4000 direct WITBA and hold.

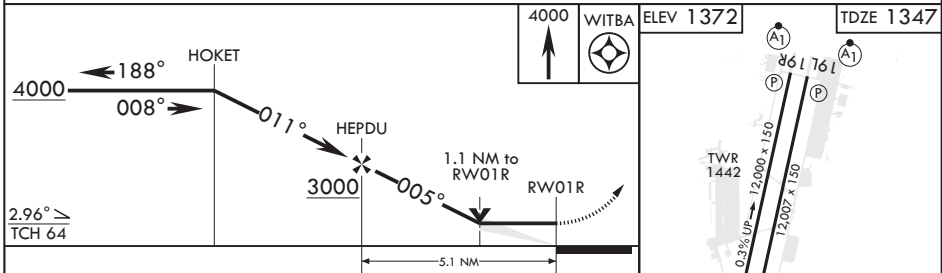
D ATIS <b>124.65 269.9</b>	WICHITA APP CON <b>134.8 269.1</b>	TOWER <b>127.25 291.775</b>	GND CON <b>118.0 275.8</b>
-------------------------------	---------------------------------------	--------------------------------	-------------------------------

DME/DME RNP -0.3 NA

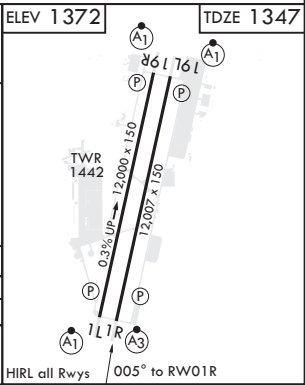
RADAR required for holding abv 5000 or abv 230 KIAS



EMERG SAFE ALT 100 NM 4100



CATEGORY	A	B	C	D	E
LNVA MDA*	1740/40		393	(400-3/4)	
<b>C</b> CIRCLING**	1900-1 528 (600-1)	1900-1 1/2 528 (600-1 1/2)	2400-3 1028 (1100-3)		



WICHITA, KANSAS  
 Amdt 4 10SEP20

37°37'N - 97°16'W

MC CONNELL AFB (KIAB)

# RNAV (GPS) RWY 1R

NC-2, 25 FEB 2021 to 25 MAR 2021

NC-2, 25 FEB 2021 to 25 MAR 2021