

ILS or LOC RWY 19R

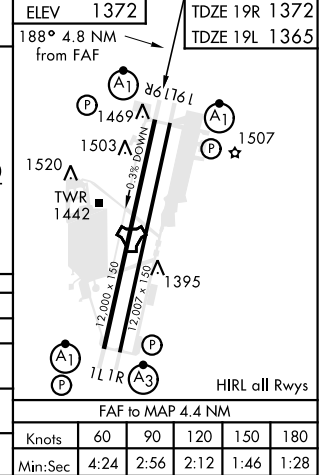
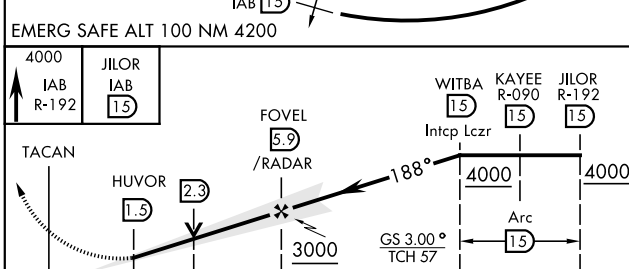
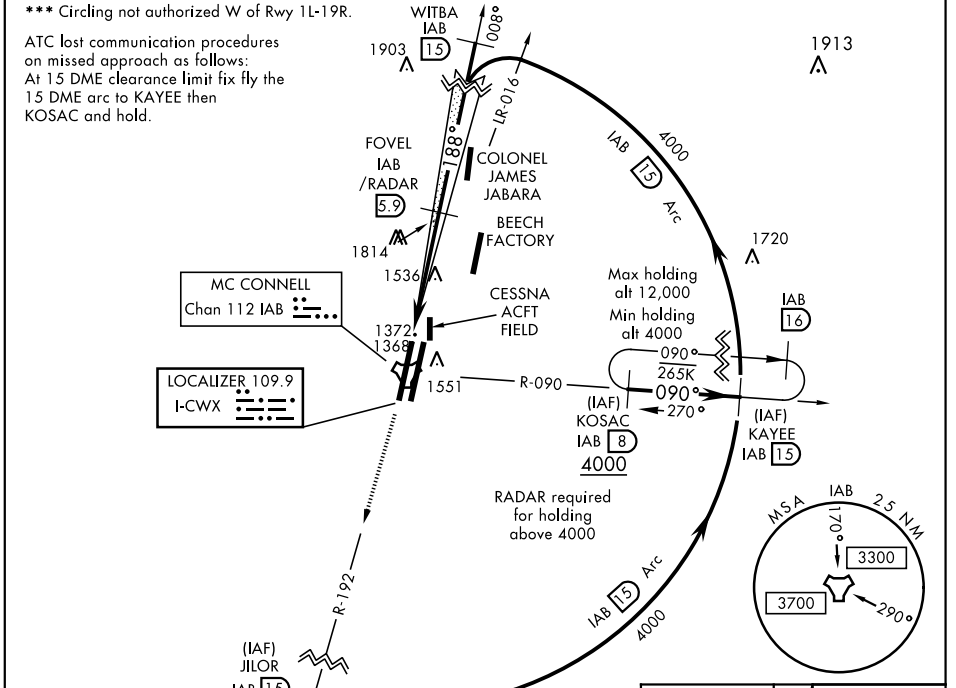
LOC I-CWX 109.9	APCH CRS 188°	Rwy Ildg 19R 12,000 19L 12,007 TDZE 19R 1372 19L 1365 Arprt Elev 1372
---------------------------	-------------------------	---

AL-453 [USAF]

MC CONNELL AFB (KIAB)

RADAR or DME Required.	ALSF-1 	MISSED APPROACH: Climb to 4000 via IAB TACAN R-192 to 15 DME (JILOR). Expect further clearance from ATC.
<p>▼ * When ALS inop, increase RVR to 40 and vis to 3/4 mile ** When ALS inop, increase CAT AB RVR to 55 and vis to 1 mile, CAT CDE vis to 1 1/2 miles.</p>		

D-ATIS 124.65 269.9	WICHITA APP CON 134.8 269.1	MC CONNELL TOWER 127.25 291.775	GND CON 118.0 275.8
-------------------------------	---------------------------------------	---	-------------------------------



CATEGORY	A	B	C	D	E
S-ILS 19R *	1572/24		200	(200-1/2)	
S-LOC 19R **	1820/24	448 (500-1/2)	1820/45	448	(500-3/8)
SIDESTEP RWY 19L	1820/55	455 (500-1)	1820-1 3/8	455	(500-1 3/8)
*** CIRCLING	1900-1	528 (600-1)	1900-1 1/2 528 (600-1 1/2)	2400-3	1028 (1100-3)

WICHITA, KANSAS 37°37'N-97°16'W MC CONNELL AFB (KIAB)

Amdt 5 10SEP20

ILS or LOC RWY 19R

NC-2, 25 FEB 2021 to 25 MAR 2021

NC-2, 25 FEB 2021 to 25 MAR 2021