

VOR/DME MBS <b>112.9</b> Chan <b>76</b>	APP CRS <b>125°</b>	Rwy Idg TDZE Apt Elev <b>602</b>	<b>N/A</b> <b>N/A</b>
---	------------------------	---	--------------------------

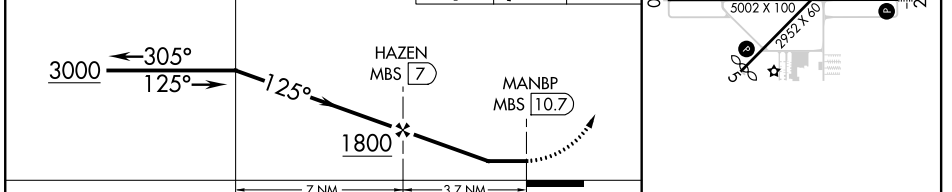
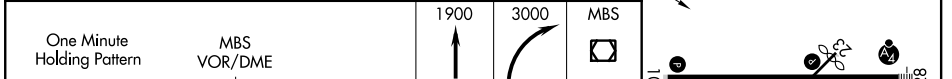
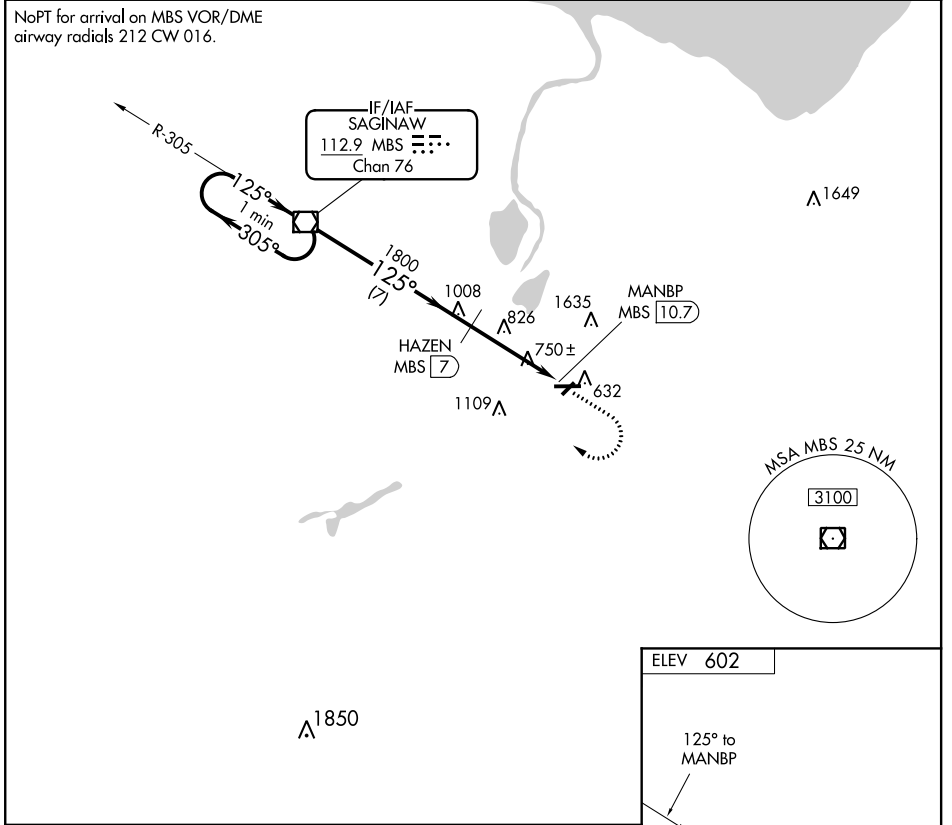
# VOR/DME-A

SAGINAW COUNTY H W BROWNE (HYX)

**⚠** Circling to Rwy 5/23 NA at night. When local altimeter setting not received, use Saginaw MBS Intl altimeter setting and increase all MDA 40 feet and increase Circling Cat C visibility ¼ SM. Circling NA for Cat C north of Rwy 10-28.

MISSED APPROACH: Climb to 1900 then climbing right turn to 3000 direct MBS VOR/DME and hold.

AWOS-3 <b>118.325</b>	GREAT LAKES APP CON * <b>120.95 235.625</b>	UNICOM <b>122.8 (CTAF)</b>
--------------------------	--	-------------------------------



CATEGORY	A	B	C	D
<b>C</b> CIRCLING	1160-1	558 (600-1)	1460-2½ 858 (900-2½)	NA

# VOR/DME-A

EC-1, 25 FEB 2021 to 25 MAR 2021

EC-1, 25 FEB 2021 to 25 MAR 2021

