

REDSTONE ARSENAL, ALABAMA

RNAV (GPS) RWY 17

WAAS CH 45638 W17A	APCH CRS 173°	Rwy ldg 7297 TDZE 685 Arprt Elev 685
--------------------------	------------------	---

AL-703 (USA)

REDSTONE AAF (KHUA)

<p>⚠ * When ALS inop, increase CAT E vis to 1 1/2 miles. ** When ALS inop, increase CAT CDE vis to 1 3/8 miles. *** Circling not authorized E of Rwy 17-35.</p>	<p>MALS R </p>	<p>MISSED APPROACH: Climb to 3000 direct FASOV and hold.</p>
--	--	--

<p>ATIS 120.65</p>	<p>HUNTSVILLE APP CON/DEP CON 118.05 239.0 W 125.6 354.1 E</p>	<p>TOWER* 126.95 (CTAF) ⓪ 290.275</p>	<p>ASR/PAR</p>
------------------------	--	---	----------------

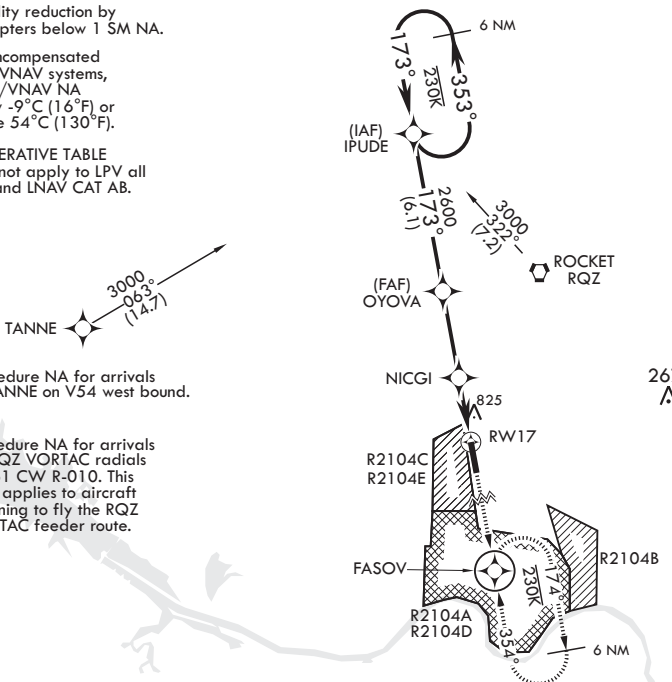
DME/DME RNP -0.3 NA

Visibility reduction by helicopters below 1 SM NA.

For uncompensated Baro-VNAV systems, LNAV/VNAV NA below -9°C (16°F) or above 54°C (130°F).

INOPERATIVE TABLE does not apply to LPV all CAT and LNAV CAT AB.

1716



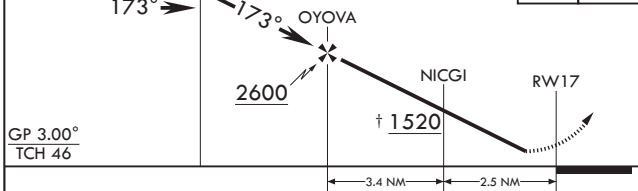
Procedure NA for arrivals at TANNE on V54 west bound.

Procedure NA for arrivals on RQZ VORTAC radials R-261 CW R-010. This note applies to aircraft planning to fly the RQZ VORTAC feeder route.

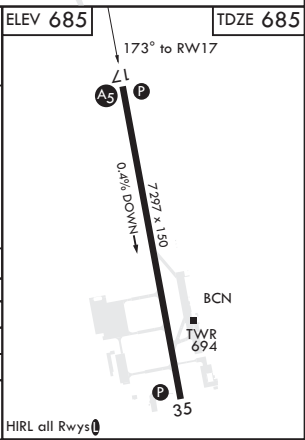
SE-4, 25 FEB 2021 to 25 MAR 2021

SE-4, 25 FEB 2021 to 25 MAR 2021

<p>3000 ← 353° 173° →</p>	<p>IPUDE</p>	<p>3000</p>	<p>FASOV</p>	<p>ELEV 685</p>	<p>TDZE 685</p>
--	--------------	-------------	--------------	-----------------	-----------------



CATEGORY	A	B	C	D	E
LPV DA		935-1	250	(300-1)	
LNAV/VNAV DA*		1113-1	428	(500-1)	
LNAV MDA**		1180-1	495	(500-1)	
C CIRCLING***	1200-1 515 (600-1)	1240-1 555 (600-1)	1480-2 1/4 795 (800-2 1/4)	1740-3	1055 (1100-3)



REDSTONE ARSENAL, ALABAMA

34°41'N - 86°41'W

REDSTONE AAF (KHUA)

Amdt 1A 03JAN19

RNAV (GPS) RWY 17