

LOC/DME I-HRO	APP CRS	Rwy Idg	<b>6161</b>
<b>111.7</b>	<b>359°</b>	TDZE	<b>1351</b>
Chan <b>54</b>		Apt Elev	<b>1365</b>

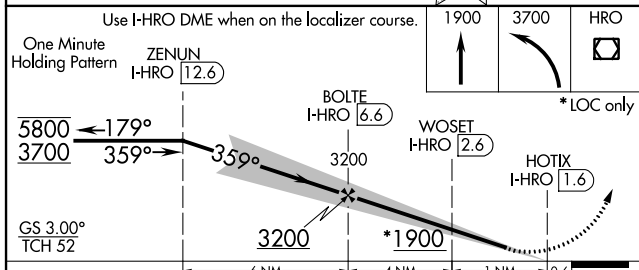
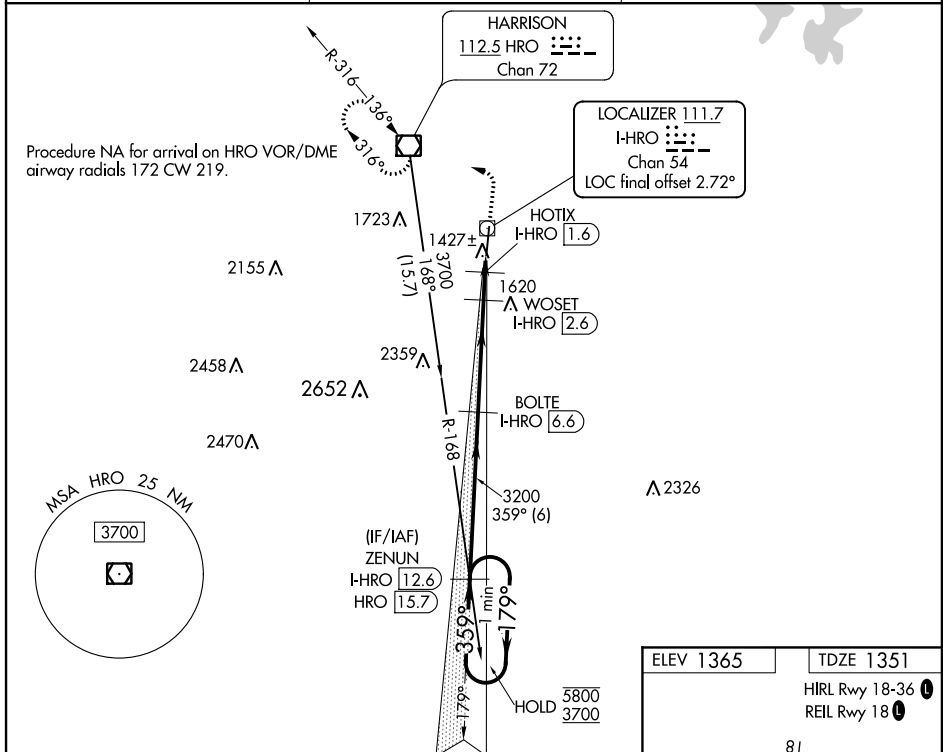
# ILS or LOC RWY 36

BOONE COUNTY (HRO)

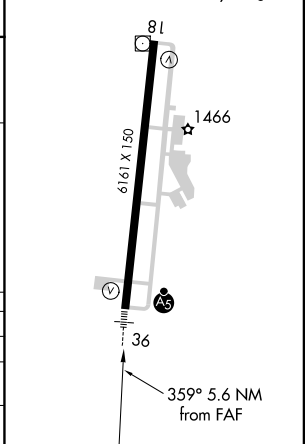
DME required for LOC only. DME or RADAR required for procedure entry.

**MALSR** MISSED APPROACH: Climb to 1900 then climbing left turn to 3700 direct HRO VOR/DME and hold, continue climb-in hold to 3700.

ASOS <b>121.125</b>	MEMPHIS CENTER <b>126.85 281.55</b>	UNICOM <b>123.0 (CTAF)</b>
------------------------	--	-------------------------------



ELEV 1365	TDZE 1351
HIRL Rwy 18-36	REIL Rwy 18



CATEGORY	A	B	C	D
S-ILS 36		1601-1/2	250 (300-1/2)	
S-LOC 36		1680-1/2	329 (400-1/2)	
CIRCLING	1840-1 475 (500-1)	1860-1 495 (500-1)	2340-3 975 (1000-3)	2560-3 1195 (1200-3)

SC-1, 25 FEB 2021 to 25 MAR 2021

SC-1, 25 FEB 2021 to 25 MAR 2021