

WAAS CH <b>86530</b> <b>W35B</b>	APP CRS <b>356°</b>	Rwy Idg TDZE Apt Elev	<b>8301</b> <b>36</b> <b>36</b>
--	------------------------	-----------------------------	---------------------------------------

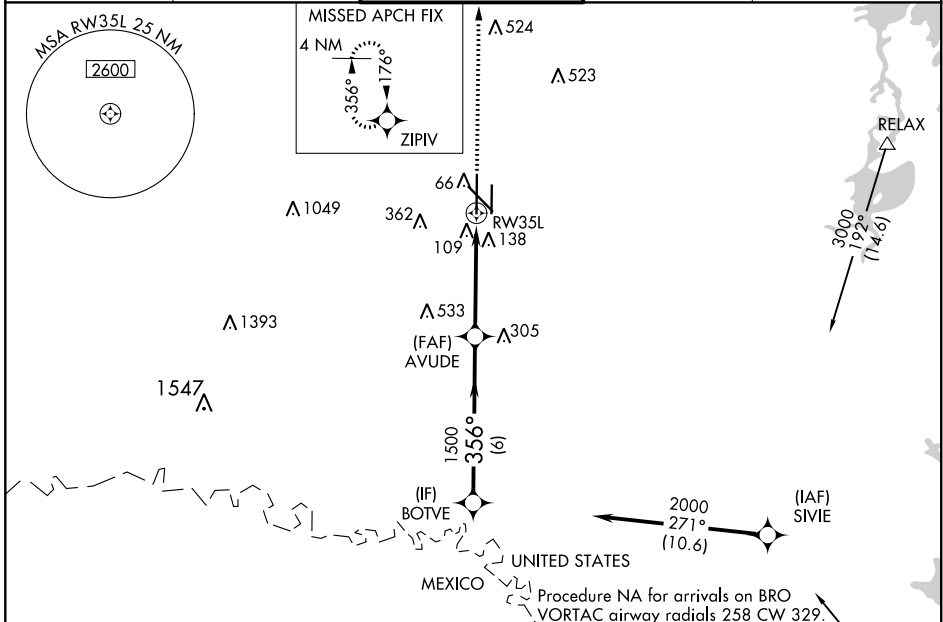
# RNAV (GPS) Y RWY 35L

VALLEY INTL (H.R.L.)

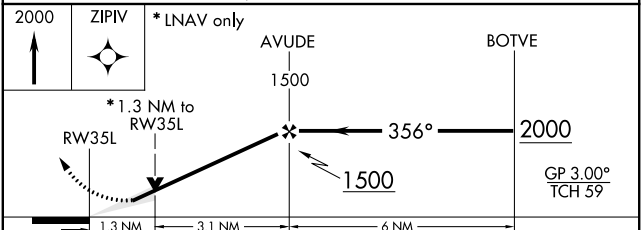
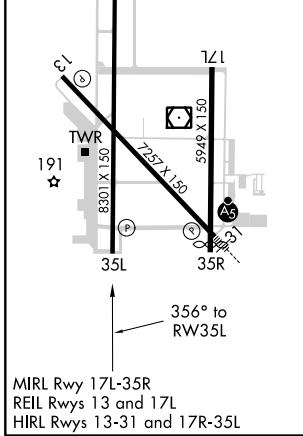
**⚠** For uncompensated Baro-VNAV systems, LNAV/VNAV NA below -15°C (5°F) or above 54°C (130°F). DME/DME RNP-0.3 NA. When local altimeter setting not received, use Port Isabel altimeter setting: increase LPV DA to 328 feet and all visibilities 1/8 SM; increase LNAV/VNAV DA to 418 feet and all visibilities 1/8 SM; increase all MDAs 60 feet and visibility Cats C and D 1/4 SM. Baro-VNAV and VDP NA with Port Isabel altimeter setting.

**MISSED APPROACH:**  
Climb to 2000 direct ZIPIV and hold.

ATIS <b>124.85</b>	VALLEY APP CON <b>120.7 279.5</b>	HARLINGEN TOWER ★ <b>119.3 (CTAF)</b> <b>317.6</b>	GND CON <b>121.7</b>	UNICOM <b>122.95</b>
-----------------------	--------------------------------------	---	-------------------------	-------------------------



ELEV 36	<b>D</b>	TDZE 36
---------	----------	---------



CATEGORY	A	B	C	D
LPV DA		286-3/4	250 (300-3/4)	
LNAV/VNAV DA		376-1/8	340 (400-1/8)	
LNAV MDA	500-1	464 (500-1)	500-1 3/8	464 (500-1 3/8)
<b>C</b> CIRCLING	500-1 464 (500-1)	560-1 524 (600-1)	680-1 3/4 644 (700-1 3/4)	680-2 644 (700-2)

SC-3, 25 FEB 2021 to 25 MAR 2021

SC-3, 25 FEB 2021 to 25 MAR 2021