

WAAS CH <b>50131</b> <b>W17A</b>	APP CRS <b>176°</b>	Rwy ldg <b>8301</b> TDZE <b>35</b> Apt Elev <b>36</b>
--	------------------------	---

# RNAV (GPS) Y RWY 17R

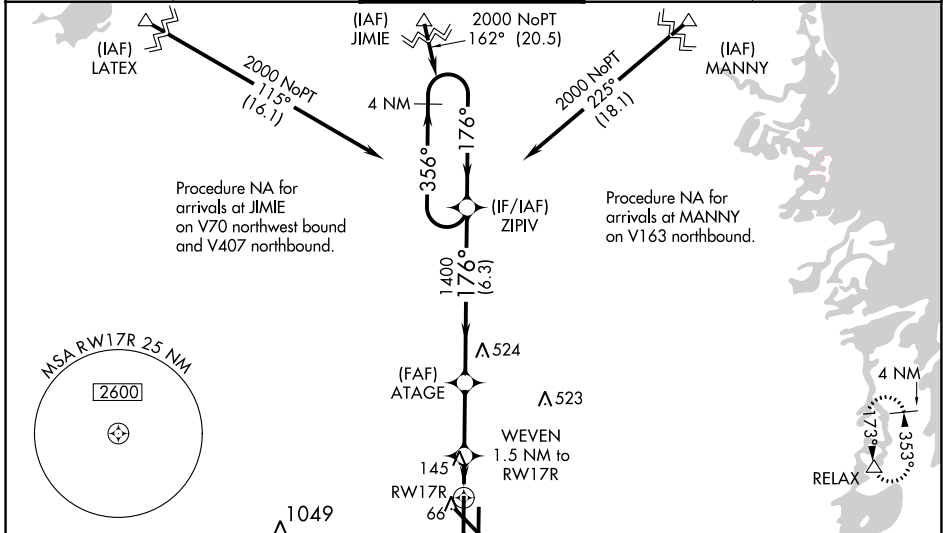
VALLEY INTL (HRL)

**⚠** For uncompensated Baro-VNAV systems, LNAV/VNAV NA below 2°C (36°F) or above 54°C (130°F). DME/DME RNP-0.3 NA. When local altimeter setting not received, use Port Isabel altimeter setting: increase LPV DA to 277 feet; increase LNAV/VNAV DA to 327 feet; increase all MDAs 60 feet and visibility Cats C and D ¼ SM. For inoperative MALSRL, increase LNAV/VNAV all Cats visibility to RVR 4000, LNAV all Cats visibility to RVR 5500. For inoperative MALSRL, when using Port Isabel altimeter setting, increase LNAV/VNAV all Cats visibility to RVR 4500, LNAV Cats A and B visibility to RVR 5500 and Cats C and D visibility to 1¼ mile. Baro-VNAV NA with Port Isabel altimeter setting. VDP NA with Port Isabel altimeter setting. \*\*RVR 1800 authorized with use of FD or AP or HUD to DA, NA when using Port Isabel altimeter setting.

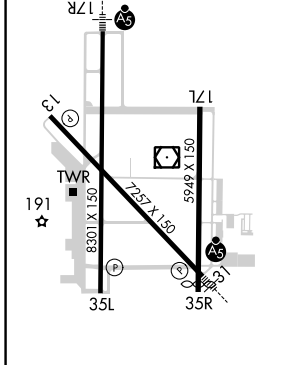
**MALSRL**

**MISSED APPROACH:**  
Climb to 500 then climbing left turn to 2000 direct RELAX and hold

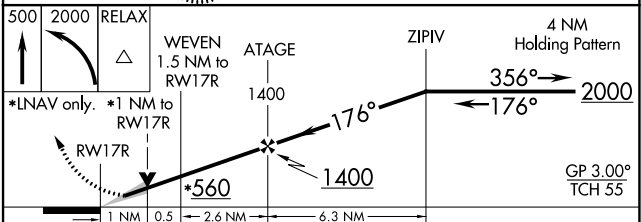
ATIS <b>124.85</b>	VALLEY APP CON <b>120.7 279.5</b>	HARLINGEN TOWER* <b>119.3 (CTAF) 0 317.6</b>	GND CON <b>121.7</b>	UNICOM <b>122.95</b>
-----------------------	--------------------------------------	---	-------------------------	-------------------------



ELEV <b>36</b>	<b>D</b>	TDZE <b>35</b>
----------------	----------	----------------



MIRL Rwy 17L-35R  
REIL Rwy 13 and 17L  
HIRL Rwy 13-31 and 17R-35L



CATEGORY	A	B	C	D
LPV DA **	235/24		200 (200-½)	
LNAV/VNAV DA	285/24		250 (300-½)	
LNAV MDA	400/24	365 (400-½)	400/35	365 (400-¾)
<b>C</b> CIRCLING	500-1 464 (500-1)	560-1 524 (600-1)	680-1¾ 644 (700-1¾)	680-2 644 (700-2)

SC-3, 25 FEB 2021 to 25 MAR 2021

SC-3, 25 FEB 2021 to 25 MAR 2021