

WAAS CH <b>78230</b> W13A	APP CRS <b>131°</b>	Rwy Idg TDZE Apt Elev	<b>7257</b> <b>35</b> <b>36</b>
---------------------------------	------------------------	-----------------------------	---------------------------------------

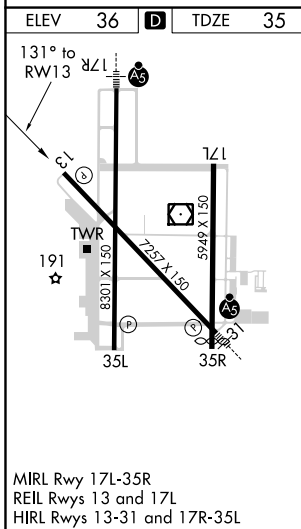
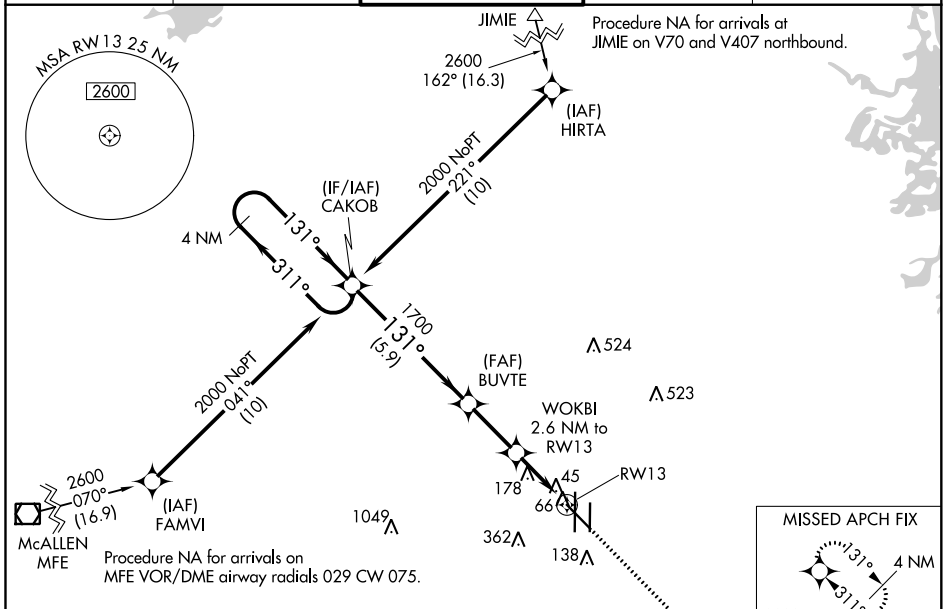
# RNAV (GPS) Y RWY 13

VALLEY INTL (HRL)

**⚠** For uncompensated Baro-VNAV systems, LNAV/VNAV NA below -15°C (5°F) or above 54°C (130°F). DME/DME RNP-0.3 NA. Visibility reduction by helicopters NA. When local altimeter setting not received, use Port Isabel altimeter setting: increase LPV DA to 327 feet and all visibilities 1/8 SM; increase LNAV/VNAV DA to 370 feet and all visibilities 1/8 SM; increase all MDAs 60 feet and visibility Cats C and D 1/4 SM. Baro-VNAV and VDP NA with Port Isabel altimeter setting.

**MISSED APPROACH:**  
Climb to 2000 direct AMAPE and hold.

ATIS <b>124.85</b>	VALLEY APP CON <b>120.7 279.5</b>	HARLINGEN TOWER ★ <b>119.3 (CTAF) 0 317.6</b>	GND CON <b>121.7</b>	UNICOM <b>122.95</b>
-----------------------	--------------------------------------	--	-------------------------	-------------------------



CATEGORY	A	B	C	D
	500-1 464 (500-1)	560-1 524 (600-1)	680-1 3/4 644 (700-1 3/4)	680-2 644 (700-2)

LPV DA	285-3/4		250 (300-3/4)	
LNAV/VNAV DA	328-7/8		293 (300-7/8)	
LNAV MDA	440-1		405 (500-1)	
<b>C</b> CIRCLING	500-1 464 (500-1)		560-1 524 (600-1)	
	680-1 3/4 644 (700-1 3/4)		680-2 644 (700-2)	

SC-3, 25 FEB 2021 to 25 MAR 2021

SC-3, 25 FEB 2021 to 25 MAR 2021