

WAAS CH 90430 W17B	APP CRS 176°	Rwy Idg TDZE 34 Apt Elev 36	5949
--	------------------------	---	-------------

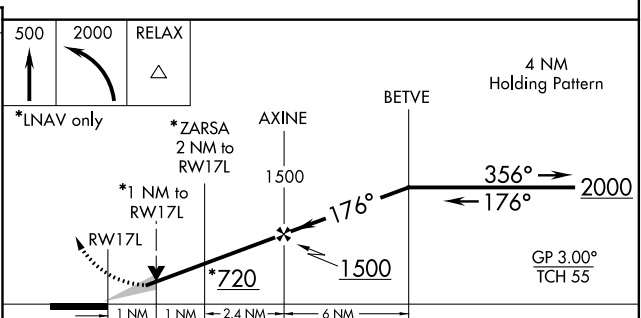
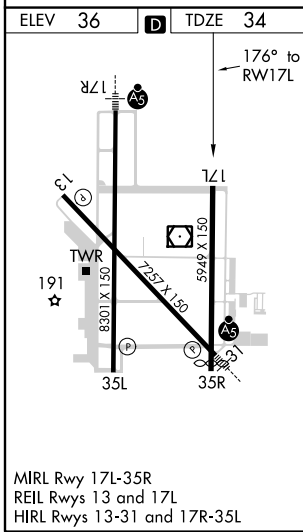
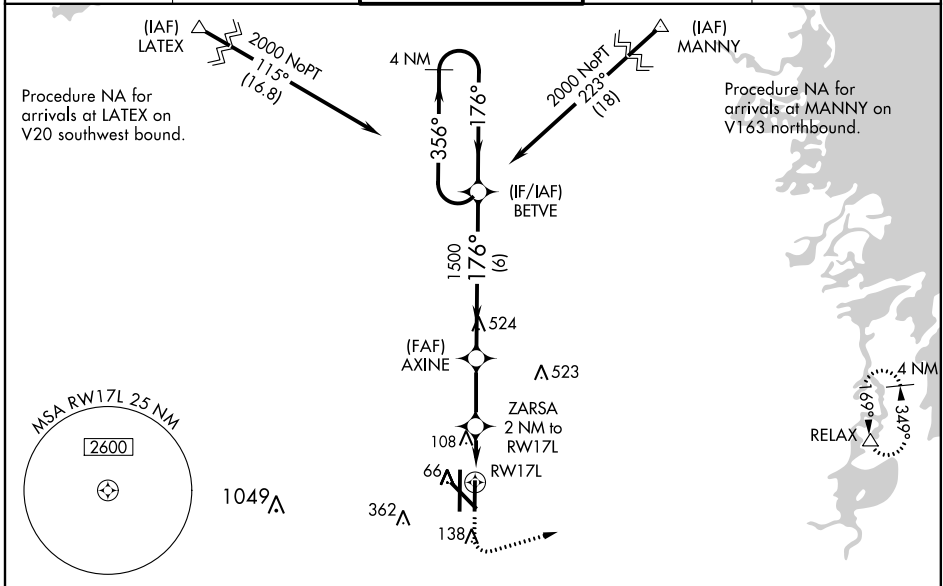
RNAV (GPS) RWY 17L

VALLEY INTL (HRL)

⚠ For uncompensated Baro-VNAV systems, LNAV/VNAV NA below -15°C (5°F) or above 54°C (130°F). DME/DME RNP-0.3 NA. When local altimeter setting not received, use Port Isabel altimeter setting: increase LPV DA to 326 feet and all visibilities 1/8 SM; increase LNAV/VNAV DA to 392 feet and all visibilities 1/8 SM; increase all MDAs 60 feet and visibility Cats C and D 1/4 SM. Baro-VNAV and VDP NA with Port Isabel altimeter setting.

MISSED APPROACH:
Climb to 500 then climbing left turn to 2000 direct RELAX and hold.

ATIS 124.85	VALLEY APP CON 120.7 279.5	HARLINGEN TOWER ★ 119.3(CTAF) 317.6	GND CON 121.7	UNICOM 122.95
-----------------------	--------------------------------------	---	-------------------------	-------------------------



CATEGORY	A	B	C	D
LPV DA		284-3/4	250 (300-3/4)	
LNAV/VNAV DA		350-1 1/8	316 (400-1 1/8)	
LNAV MDA		400-1	366 (400-1)	
C CIRCLING	500-1 464 (500-1)	560-1 524 (600-1)	680-1 3/4 644 (700-1 3/4)	680-2 644 (700-2)

SC-3, 25 FEB 2021 to 25 MAR 2021

SC-3, 25 FEB 2021 to 25 MAR 2021