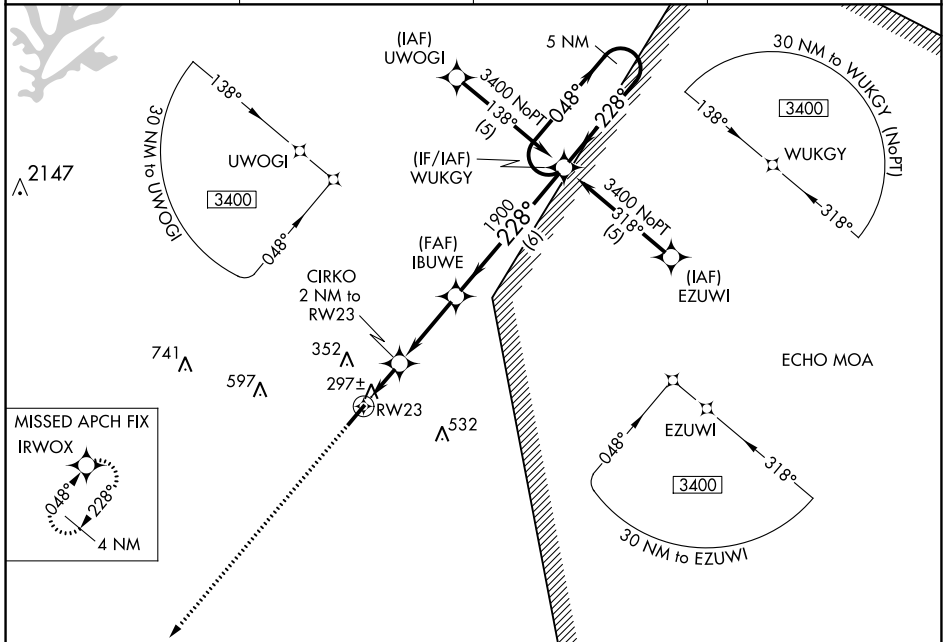


WAAS CH <b>45904</b> <b>W23A</b>	APP CRS <b>228°</b>	Rwy Idg TDZE Apt Elev	<b>5000</b> <b>202</b> <b>202</b>
----------------------------------------	------------------------	-----------------------------	-----------------------------------------

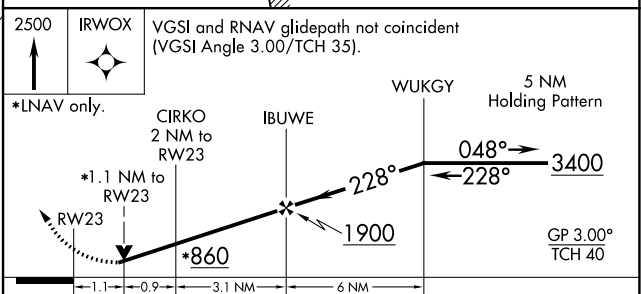
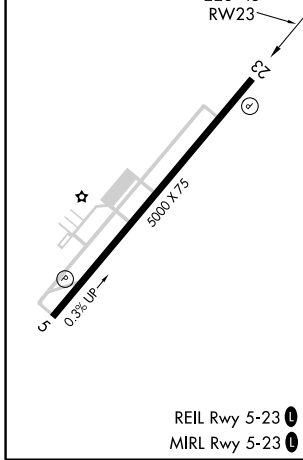
# RNAV (GPS) RWY 23

HARNETT RGNL JETPORT (HRJ)

<p><b>▼</b> <b>▲</b></p> <p>When local altimeter setting not received, use Smithfield altimeter setting and increase all DA/MDA 60 feet, increase LPV visibilities ¼ mile, and LNAV Cat. C visibility ¼ mile. DME/DME RNP-0.3 NA. Visibility reduction by helicopters NA. VDP NA when using Smithfield altimeter setting.</p>		<p>MISSED APPROACH: Climb to 2500 direct IRWOX and hold.</p>	
AWOS-3 <b>119.025</b>	FAYETTEVILLE APP CON <b>125.175 285.575</b>	GCO <b>135.075</b>	UNICOM <b>122.7</b> (CTAF) <b>0</b>



ELEV 202	TDZE 202
----------	----------



CATEGORY	A	B	C	D
LPV DA	551-1¼ 349 (400-1¼)			NA
LNAV MDA	600-1 398 (400-1)			NA
CIRCLING	600-1 398 (400-1)	660-1 458 (500-1)	720-1½ 518 (600-1½)	NA

SE-2, 25 FEB 2021 to 25 MAR 2021

SE-2, 25 FEB 2021 to 25 MAR 2021