

WAAS CH <b>90215</b> W03A	APP CRS <b>038°</b>	Rwy Idg TDZE Apt Elev	<b>7020</b> <b>3652</b> <b>3661</b>
---------------------------------	------------------------	-----------------------------	---

# RNAV (GPS) RWY 3

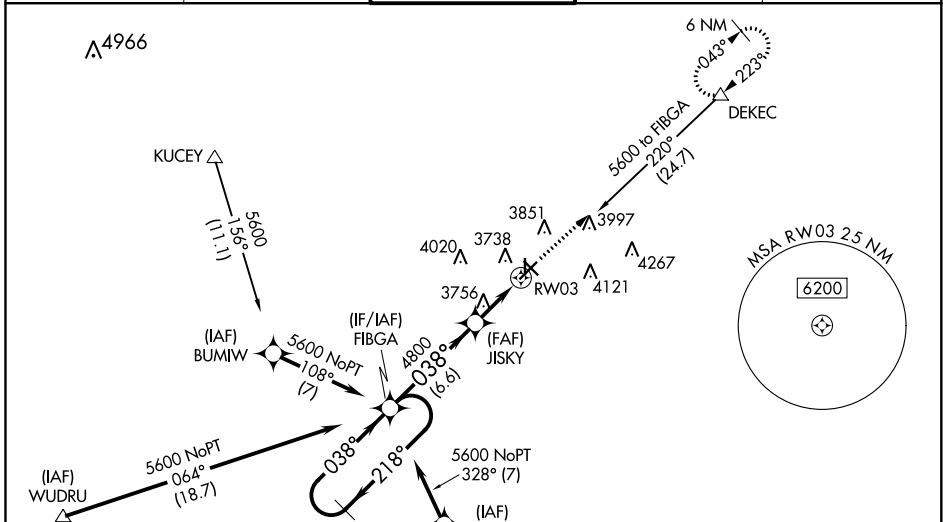
LEA COUNTY RGNL (HOB)

**⚠** For uncompensated Baro-VNAV systems, LNAV/VNAV NA below -22°C (-7°F) or above 52°C (126°F). DME/DME-RNP-0.3 NA. When local altimeter setting not received, use Carlsbad altimeter setting and increase all DA 281 feet and all MDA 300 feet, increase LPV and LNAV/VNAV all Cats visibility ½ mile, LNAV Cats C/D visibility ¾ mile, Circling Cat C visibility ¾ mile, and Circling Cat D visibility ½ mile. Baro-VNAV and VDP NA when using Carlsbad altimeter setting. Inoperative table does not apply to LPV and LNAV/VNAV. For inoperative MALSR increase LNAV Cats C/D visibility to 1 mile. For inoperative MALSR when using Carlsbad altimeter setting, increase LPV and LNAV/VNAV all Cats visibility to 1¾ miles, and LNAV Cats C/D to 1½ miles. Rwy 17 helicopter visibility reduction below 1 SM NA. Circling Rwy 17 NA at night.

**MALSR**

**MISSED APPROACH:**  
Climb to 6000 direct DEKEC and hold.

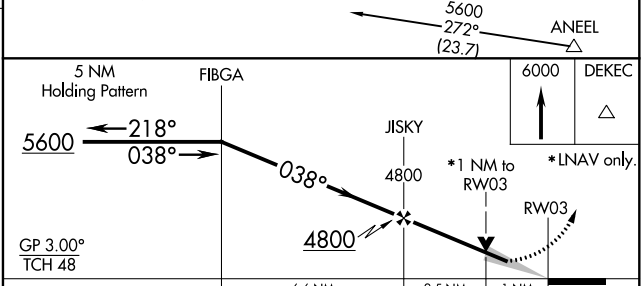
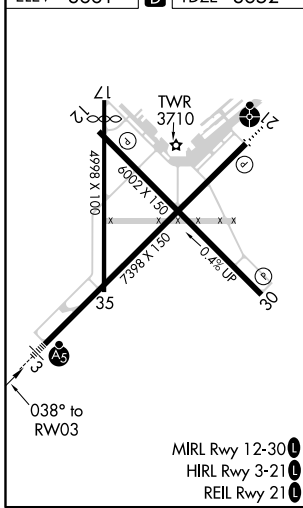
ATIS <b>119.75</b>	FORT WORTH CENTER <b>133.1 298.95</b>	HOBBS TOWER * <b>120.65 (CTAF) 0 317.4</b>	GND CON <b>121.9</b>	UNICOM <b>122.95</b>
-----------------------	--	---	-------------------------	-------------------------



SW-1, 25 FEB 2021 to 25 MAR 2021

SW-1, 25 FEB 2021 to 25 MAR 2021

ELEV 3661	<b>D</b>	TDZE 3652
-----------	----------	-----------



CATEGORY	A	B	C	D
LPV DA		3902-¾	250 (300-¾)	
LNAV/VNAV DA		3902-¾	250 (300-¾)	
LNAV MDA	4020-½	368 (400-½)	4020-⅝	368 (400-⅝)
<b>C</b> CIRCLING	4120-1 459 (500-1)	4160-1 499 (500-1)	4440-2¼ 779 (800-2¼)	4440-2½ 779 (800-2½)