

WAAS CH 45709 W06A	APP CRS 060°	Rwy Idg TDZE 526 Apt Elev 526
---------------------------------	------------------------	---

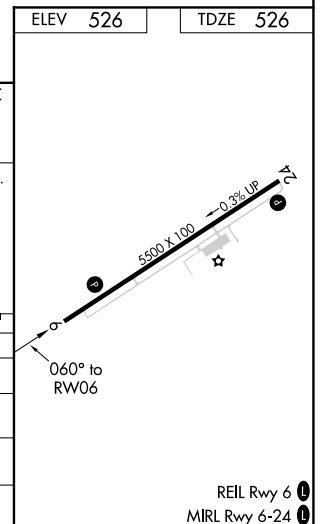
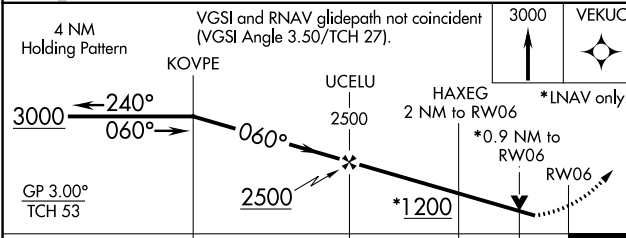
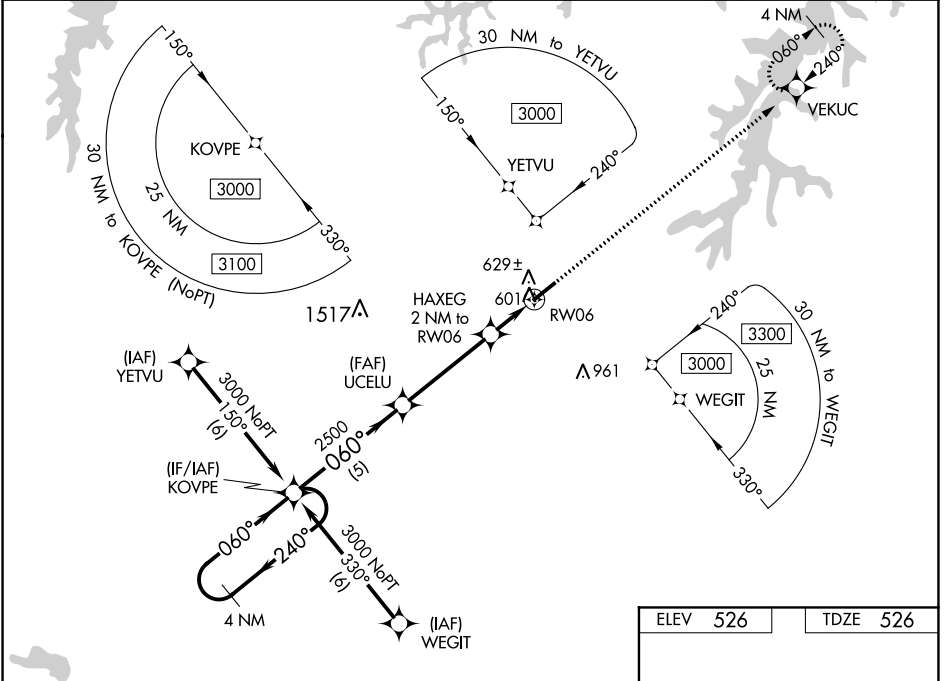
RNAV (GPS) RWY 6

HENDERSON-OXFORD (HNZ)

▼ For uncompensated Baro-VNAV systems, LNAV/VNAV NA below -16°C (4°F) or above 54°C (130°F).
▲ DME/DME RNP-0.3 NA. When local altimeter setting not received, use Roxboro altimeter setting and increase all DA 64 feet and all MDA 80 feet; increase LPV and LNAV/VNAV all Cats visibility ¼ mile, LNAV and Circling Cats C and D visibility ¼ mile. Baro-VNAV and VDP NA when using Roxboro altimeter setting. Helicopter visibility reduction below ¾ SM NA.

MISSED APPROACH:
Climb to 3000 direct VEKUC and hold.

AWOS-3 118.625	RALEIGH APP CON 132.35 256.9	GCO 135.075	UNICOM 122.8 (CTAF) 0
--------------------------	--	-----------------------	---------------------------------



CATEGORY	A	B	C	D
LPV DA		814-7/8	288 (300-7/8)	
LNAV/VNAV DA		810-7/8	284 (300-7/8)	
LNAV MDA		880-1	354 (400-1)	
CIRCLING	960-1	980-1	1100-1½	1280-2½
	434 (500-1)	454 (500-1)	574 (600-1½)	754 (800-2½)

SE-2, 25 FEB 2021 to 25 MAR 2021

SE-2, 25 FEB 2021 to 25 MAR 2021