

WAAS CH 63009 W24A	APP CRS 240°	Rwy Idg 5500 TDZE 523 Apt Elev 526
--	------------------------	---

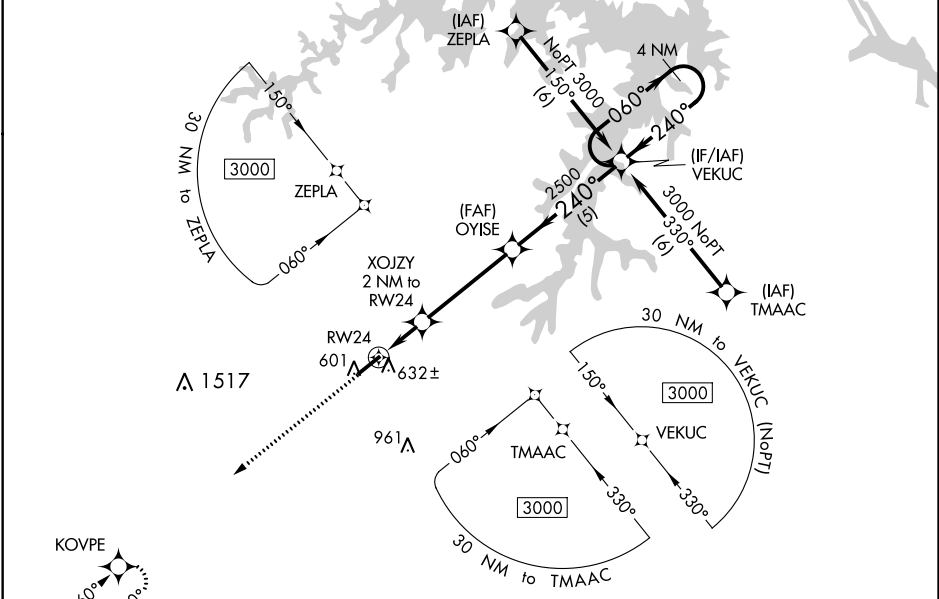
RNAV (GPS) RWY 24

HENDERSON-OXFORD (HNZ)

▼ For uncompensated Baro-VNAV systems, LNAV/VNAV NA below -16°C (4°F) or above 54°C (130°F).
▲ DME/DME RNP-0.3 NA. When local altimeter setting not received, use Roxboro altimeter setting and increase all DA 64 feet, and all MDA 80 feet; increase LPV all Cats visibility 1/8 mile, LNAV/VNAV all Cats and Circling Cats C and D visibility 1/4 mile, and LNAV Cats C and D 3/8 mile. Helicopter visibility reduction below 3/4 SM NA. Baro-VNAV and VDP NA when using Roxboro altimeter setting.

MISSED APPROACH:
Climb to 3000 direct KOVPE and hold.

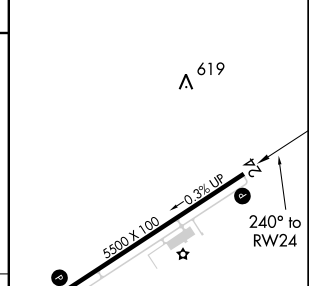
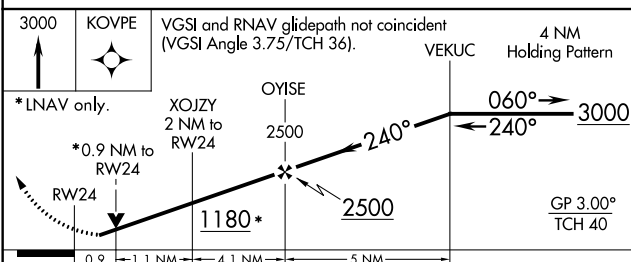
AWOS-3 118.625	RALEIGH APP CON 132.35 256.9	GCO 135.075	UNICOM 122.8(CTAF) 0
--------------------------	--	-----------------------	--------------------------------



SE-2, 25 FEB 2021 to 25 MAR 2021

SE-2, 25 FEB 2021 to 25 MAR 2021

ELEV 526	TDZE 523
----------	----------



CATEGORY	A	B	C	D
LPV DA		773-7/8	250 (300-7/8)	
LNAV/VNAV DA		813-1	290 (300-1)	
LNAV MDA		900-1	377 (400-1)	
C CIRCLING	960-1 434 (500-1)	980-1 454 (500-1)	1100-1 1/2 574 (600-1 1/2)	1280-2 1/2 754 (800-2 1/2)

