

LOC I-HNZ 109.75	APP CRS 060°	Rwy Idg 5500
		TDZE 526
		Apt Elev 526

LOC RWY 6

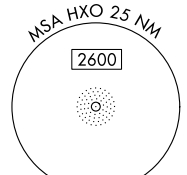
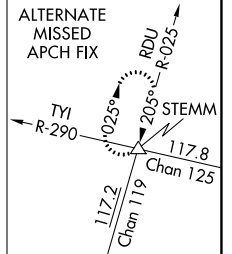
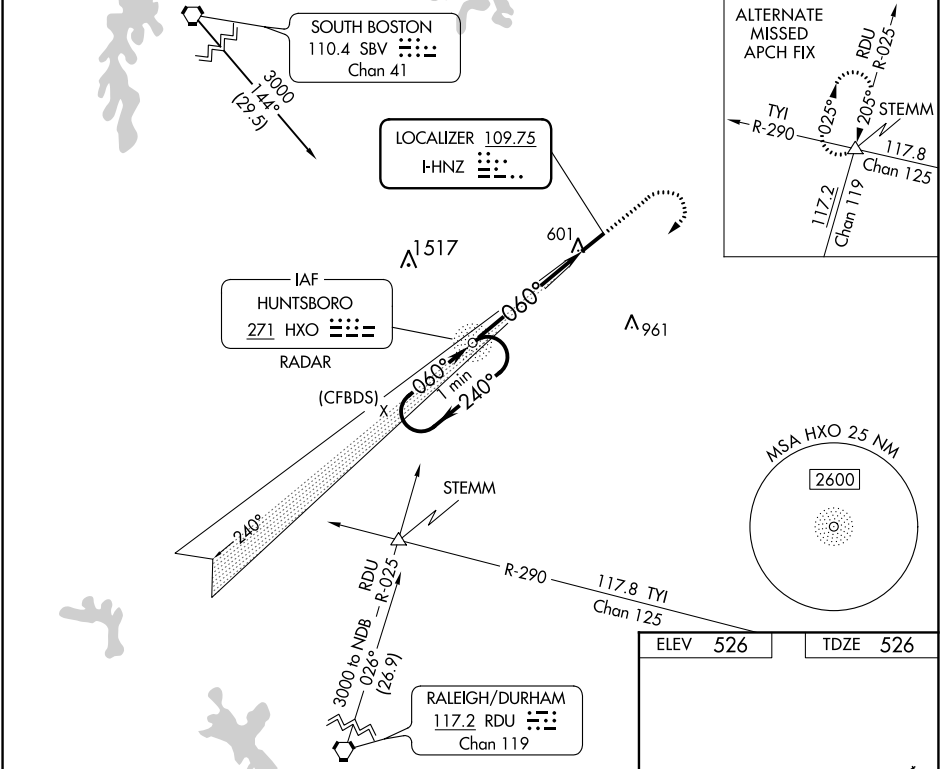
HENDERSON-OXFORD (HNZ)

ADF or RADAR required. ADF or RADAR required for procedure entry.

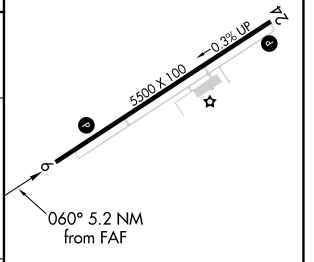
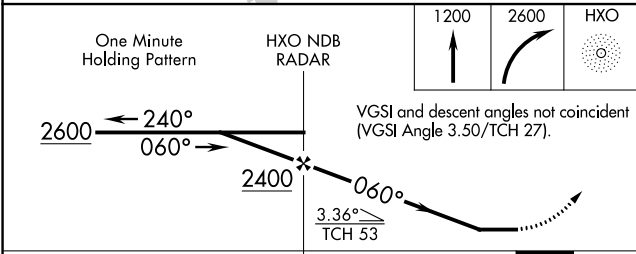
▼ Rwy 6 helicopter visibility reduction below 3/4 SM NA. When local altimeter setting not received, use Roxboro altimeter setting and increase all MDA 80 feet; increase S-6 Cat C/D visibility 1/2 SM and Circling Cat C and D visibility 1/4 SM.

▲ MISSED APPROACH: Climb to 1200 then climbing right turn to 2600 direct HXO NDB/RADAR and hold.

AWOS-3 118.625	RALEIGH APP CON 132.35 256.9	GCO 135.075	UNICOM 122.8(CTAF) 0
--------------------------	--	-----------------------	--------------------------------



ELEV	526	TDZE	526
------	-----	------	-----



CATEGORY	A	B	C	D
S-6	980-1	454 (500-1)	980-1 3/8	454 (500-1 3/8)
C CIRCLING	980-1	454 (500-1)	1100-1 1/2 574 (600-1 1/2)	1280-2 1/2 754 (800-2 1/2)

REIL Rwy 6 0					
MIRL Rwy 6-24 0					
FAF to MAP 5.2 NM					
Knots	60	90	120	150	180
Min:Sec	5:12	3:28	2:36	2:05	1:44

SE-2, 25 FEB 2021 to 25 MAR 2021

SE-2, 25 FEB 2021 to 25 MAR 2021