

WAAS CH <b>56416</b> <b>W34A</b>	APP CRS <b>339°</b>	Rwy Idg TDZE <b>322</b> Apt Elev <b>341</b>	<b>5387</b>
--	------------------------	---	-------------

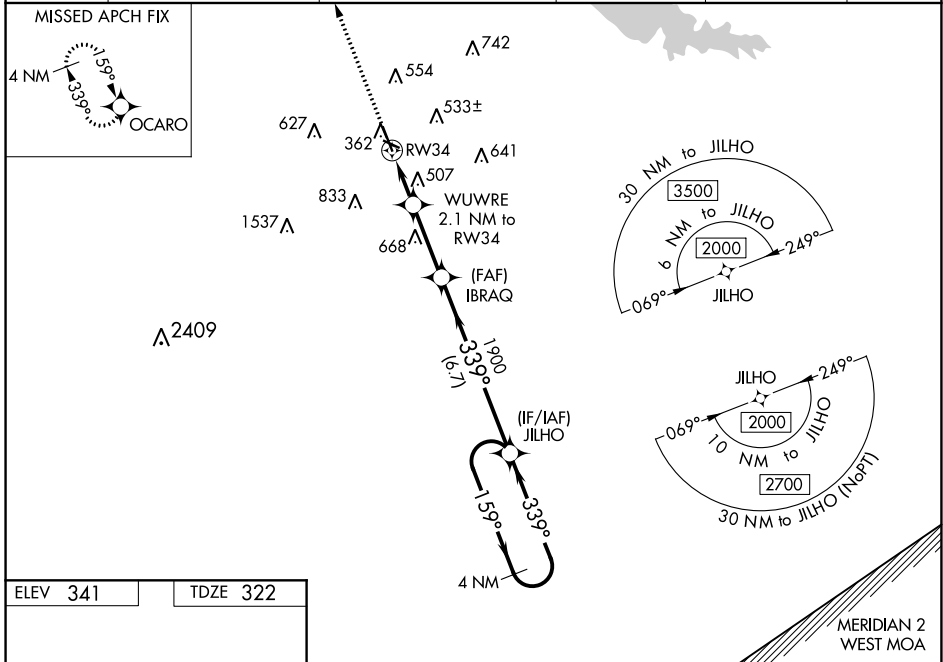
# RNAV (GPS) RWY 34

HAWKINS FIELD (HKS)

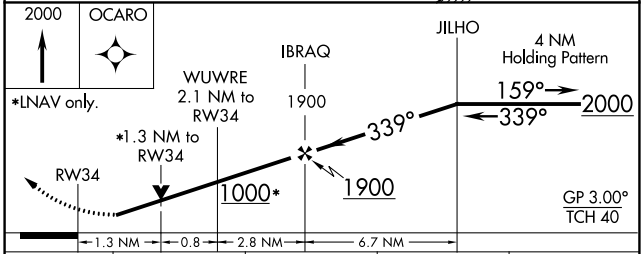
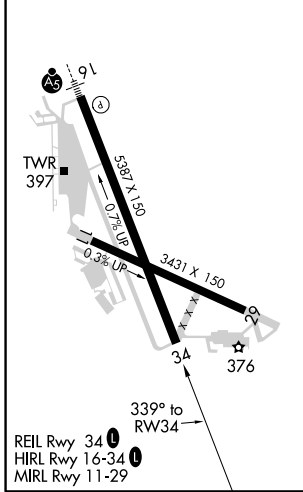
**⚠** For uncompensated Baro-VNAV systems, LNAV/VNAV NA below -6°C (22°F) or above 54°C (130°F). DME/DME RNP-0.3 NA. Baro-VNAV and VDP NA when using Jackson-Medgar Wiley Evers Intl altimeter setting. When local altimeter setting not received, use Jackson-Medgar Wiley Evers Intl altimeter setting and increase all DA 19 feet and all MDA 20 feet. Increase LPV and LNAV/VNAV all Cats visibility 1/8 mile and Circling Cat C visibility 1/4 mile. Rwy 34 helicopter visibility reduction below 3/4 SM NA.

**MISSED APPROACH:**  
Climb to 2000 direct  
OCARO and hold.

ASOS <b>120.625</b>	JACKSON APP CON * <b>123.9 319.2</b>	HAWKINS TOWER * <b>119.65 (CTAF) 257.8</b>	GND CON <b>121.9 239.0</b>	CLNC DEL <b>121.9</b> (when twr closed)	UNICOM <b>122.95</b>
------------------------	---	---	-------------------------------	---	-------------------------



ELEV <b>341</b>	TDZE <b>322</b>
-----------------	-----------------



CATEGORY	A	B	C	D
LPV DA		588-7/8	266 (300-7/8)	
LNAV/VNAV DA		670-1 1/8	348 (400-1 1/8)	
LNAV MDA	760-1	438 (500-1)	760-1 3/8	438 (500-1 3/8)
<b>C</b> CIRCLING	860-1 519 (600-1)	880-1 539 (600-1)	1140-2 1/4 799 (800-2 1/4)	1320-3 979 (1000-3)

SC-4, 25 FEB 2021 to 25 MAR 2021

SC-4, 25 FEB 2021 to 25 MAR 2021