

NW-1, 25 FEB 2021 to 25 MAR 2021

**DEPARTURE ROUTE DESCRIPTION**

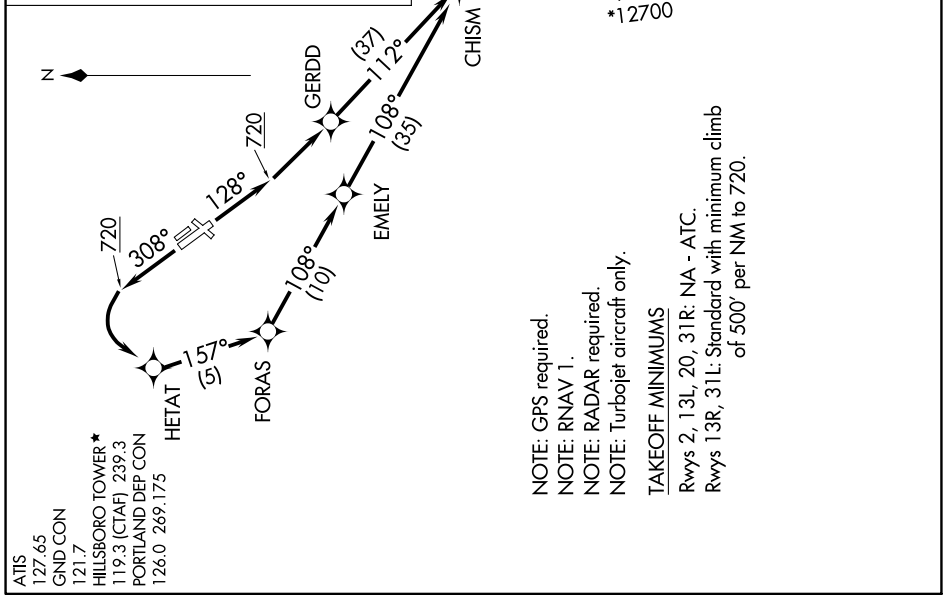
**TAKEOFF RUNWAY 13R:** Climb heading 128° to 720, then climbing left turn direct GERDD, then on depicted route to CHISM, thence . . . .

**TAKEOFF RUNWAY 31L:** Climb heading 308° to 720, then climbing left turn direct HETAT, then on depicted route to CHISM, thence . . . .

. . . . on (Transition). Maintain assigned altitude. Expect filed altitude 10 minutes after departure.

DESCHUTES TRANSITION [CHISM4.DSD]  
JOGEN TRANSITION [CHISM4.JOGEN]  
KIMBERLY TRANSITION [CHISM4.IMB]  
PAWLI TRANSITION [CHISM4.PAWLI]  
RIELY TRANSITION [CHISM4.RIELY]  
SMIGE TRANSITION [CHISM4.SMIGE]

**TOP ALTITUDE:  
ASSIGNED BY ATC**



NOTE: Chart not to scale.

NW-1, 25 FEB 2021 to 25 MAR 2021