

OGDEN, UTAH


TACAN RWY 14

TACAN HIF Chan 49	APCH CRS 131°	Rwy ldg TDZE Arpt Elev	13,500 4786 4789
----------------------	------------------	------------------------------	------------------------

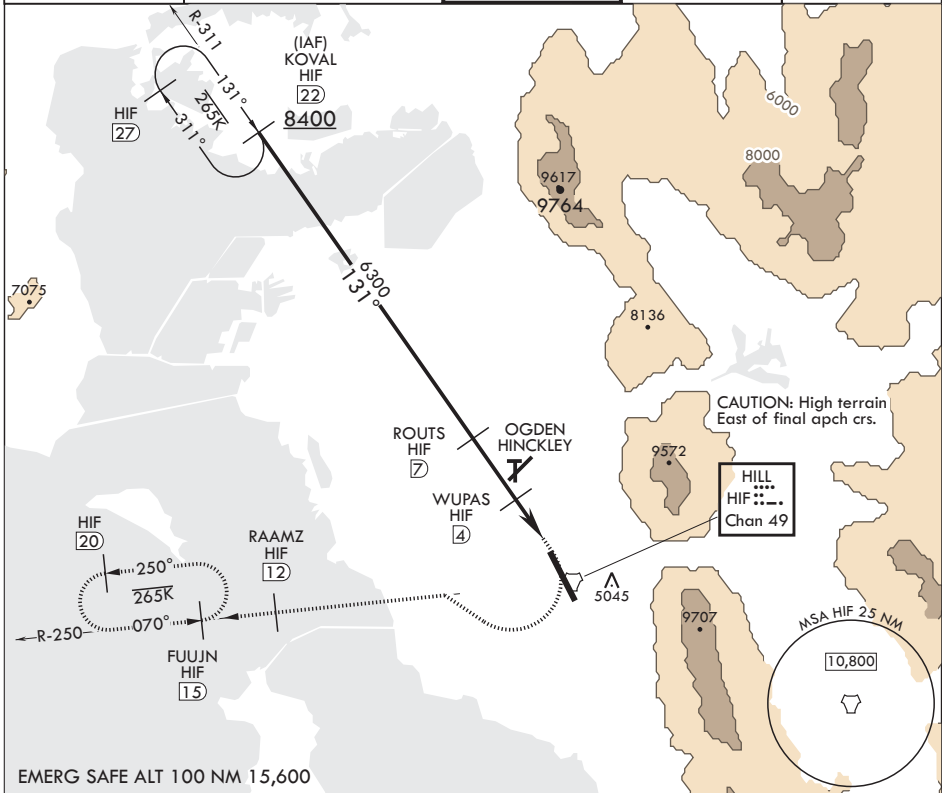
AL-296 (USAF)

HILL AFB (KHIF)

V * When ALS inop, increase RVR to 55, vis to 1 mile.
 ** Circling not authorized in sector NE of Rwy 14-32.

ALSF-2
 MISSED APPROACH: Climb to 5300, then turn right heading 290°, remain within HIF TACAN 5.7 DME until established on 290° heading. Intercept HIF R-250 outbound. Cross RAAMZ at 6500, then climb and maintain 7200 direct to FUJUN and hold.

ATIS 134.925 397.9	SALT LAKE CITY APP CON 121.1 319.25	TOWER 127.15 263.15	GND CON 121.6 275.8	CLNC DEL 124.1 335.8
-----------------------	--	------------------------	------------------------	-------------------------

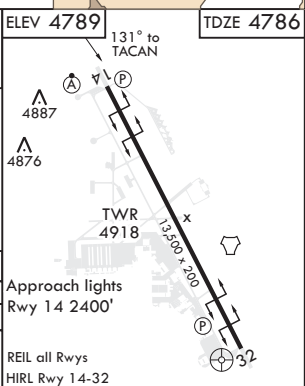


EMERG SAFE ALT 100 NM 15,600

KOVAL [22] 8400 131° 3.25° TCH 59	VGS and descent angles not coincident.	5300 6500 hdg 290°	HIF R-250	RAAMZ HIF [12]	ELEV 4789 TDZE 4786
ROUTS [7] → WUPAS [4] → TACAN → JESGO [2.1]					
Altitudes: 8400, 6300, 5700, 5300, 6500, 4887, 4876, 4918					
Distances: 3 NM, 1.9 NM, .6					
CATEGORY	A	B	C	D	E
S-14*	5100/24	314 (400-1/2)	5100/40	314	(400-3/4)
C CIRCLING**	5240-1	451 (500-1)	5240-1 1/2 451 (500-1 1/2)	5340-2 551 (600-2)	5860-3 1071 (1100-3)

Approach lights Rwy 14 2400'

REIL all Rwys
HIRL Rwy 14-32



OGDEN, UTAH

41°07'N - 111°58'W

HILL AFB (KHIF)

Amdt 5 12OCT17

TACAN RWY 14

SW-4, 25 FEB 2021 to 25 MAR 2021

SW-4, 25 FEB 2021 to 25 MAR 2021