

IZZ0 SEVEN DEPARTURE (RNAV)

AL-6648 (FAA)

PHOENIX GOODYEAR (GYR)
GOODYEAR, ARIZONA

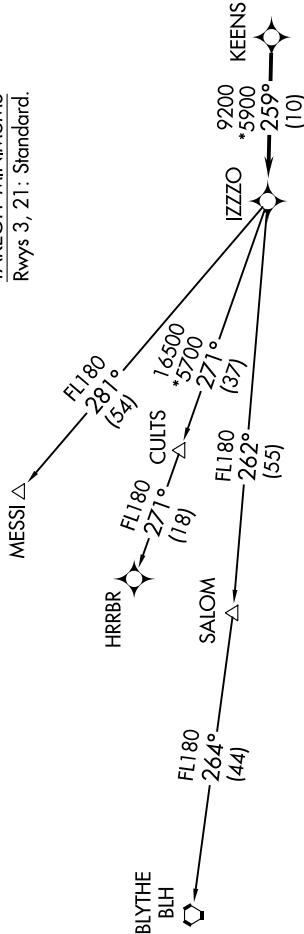
SW-4, 25 FEB 2021 to 25 MAR 2021

TOP ALTITUDE: ASSIGNED BY ATC

ATIS 118.35
GND CON 121.7
GOODYEAR TOWER ★
120.1 239.3
LUKE DEP CON ★
125.45 263.125
PHOENIX DEP CON
120.7 239.0

RNAV 1.
Turbojets and turboprops only.
RADAR required.
GPS required.
Aircraft requesting FL220 and below must file BLYTHE TRANSITION.
Turbojets landing LAX, file MESSI TRANSITION.
Aircraft landing other than LAX and turboprops landing at LAX: Requesting FL240 and above, file HRRBR TRANSITION.
Aircraft departing KGEU and KGYR ATC assigned only.

TAKEOFF MINIMUMS
Rwys 3, 21: Standard.

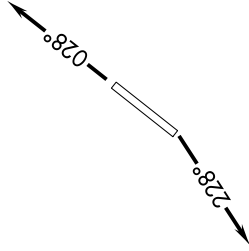
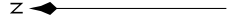


DEPARTURE ROUTE DESCRIPTION

TAKEOFF RUNWAY 3: Climb heading 028° or as assigned by ATC, thence. . . .
TAKEOFF RUNWAY 21: Climb heading 228° or as assigned by ATC, thence. . . .

. . . . expect RADAR vectors to KEENS, then on track 259° to IZZO, then on (transition).
Maintain ATC assigned altitude, expect filed altitude 3 minutes after departure.

BLYTHE TRANSITION (IZZ07.BLH)
HRRBR TRANSITION (IZZ07.HRRBR)
MESSI TRANSITION (IZZ07.MESSI)



NOTE: Chart not to scale.

IZZ0 SEVEN DEPARTURE (RNAV)

SW-4, 25 FEB 2021 to 25 MAR 2021