

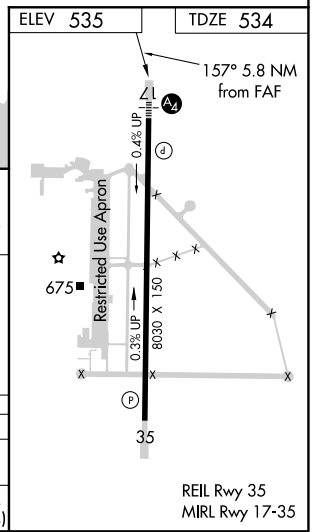
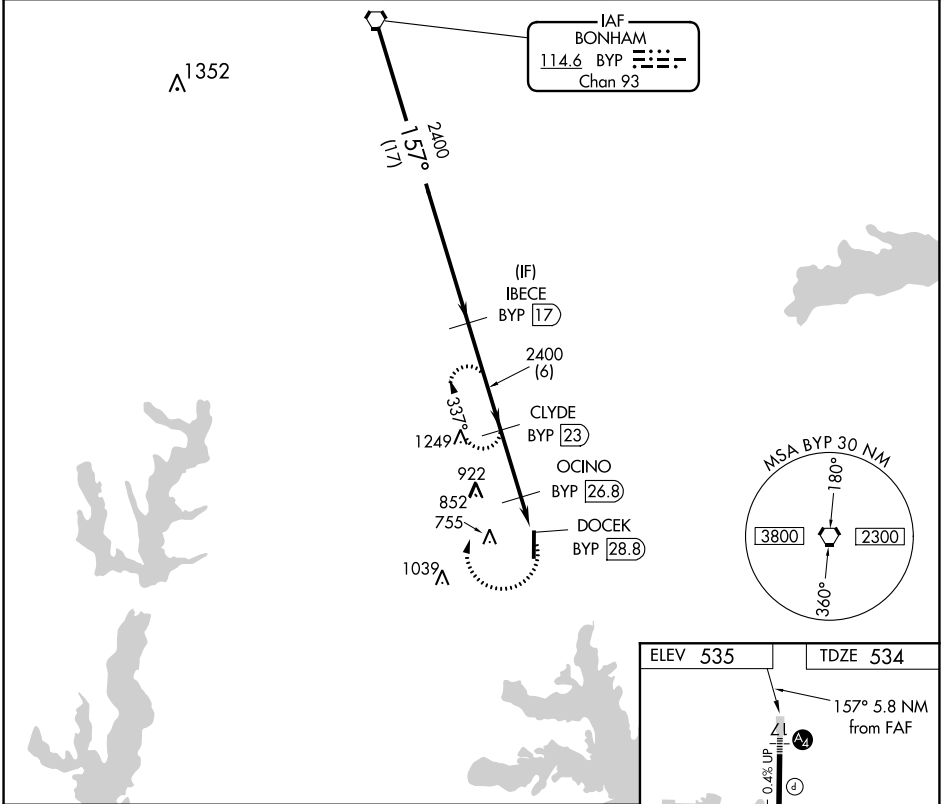
VORTAC BYP <b>114.6</b> Chan <b>93</b>	APP CRS <b>157°</b>	Rwy Idg TDZE Apt Elev	<b>8030</b> <b>534</b> <b>535</b>
--	------------------------	-----------------------------	---

# VOR/DME RWY 17

MAJORS (GVT)

**⚠** When local altimeter setting not received, use Terrell altimeter setting and increase all MDA 80 feet, increase Circling Cats C/D/E visibility by ½ SM. **⚠** MISSED APPROACH: Climbing right turn to 2400 via BYP R-157 to CLYDE /23 DME and hold.

AWOS-3 <b>133.425</b>	FORT WORTH CENTER <b>132.025 360.75</b>	MAJORS TOWER ★ <b>118.65 (CTAF) 0 385.425</b>	GND CON <b>121.7 335.8</b>	UNICOM <b>122.95</b>
--------------------------	--	--	-------------------------------	-------------------------



VGSI and descent angles not coincident (VGSI Angle 3.00/TCH 74).

Procedure	Turn	NA	Altitude	Distance	Point
			2400	17 NM	VORTAC
			2400	6 NM	IBECE BYP 17
			2400	3.8 NM	CLYDE BYP 23
			1240	2 NM	OCINO BYP 26.8
			3.16°		DOCEK BYP 28.8
			3.16°		TCH 50

CATEGORY	A	B	C	D	E
S-17	1120-1 586 (600-1)	1120-1¼ 586 (600-1¼)	1120-1½ 586 (600-1½)	1120-2 586 (600-2)	
<b>C</b> CIRCLING	1120-1 585 (600-1)	1120-1¼ 585 (600-1¼)	1120-1½ 585 (600-1½)	1240-2¼ 705 (800-2¼)	1300-2¾ 765 (800-2¾)

SC-2, 25 FEB 2021 to 25 MAR 2021

SC-2, 25 FEB 2021 to 25 MAR 2021