

WAAS CH 50525 W36A	APP CRS 357°	Rwy Idg TDZE Apt Elev	5904 3125 3125
--	------------------------	-----------------------------	---

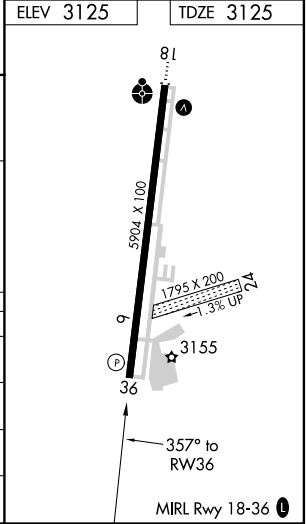
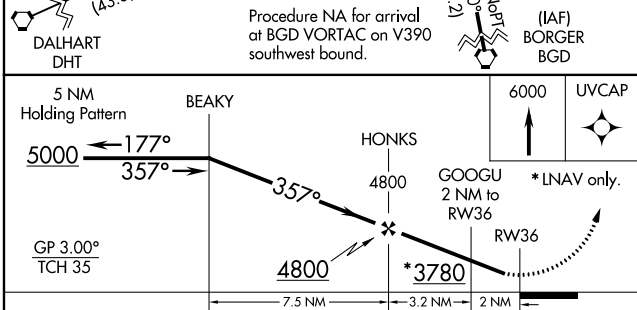
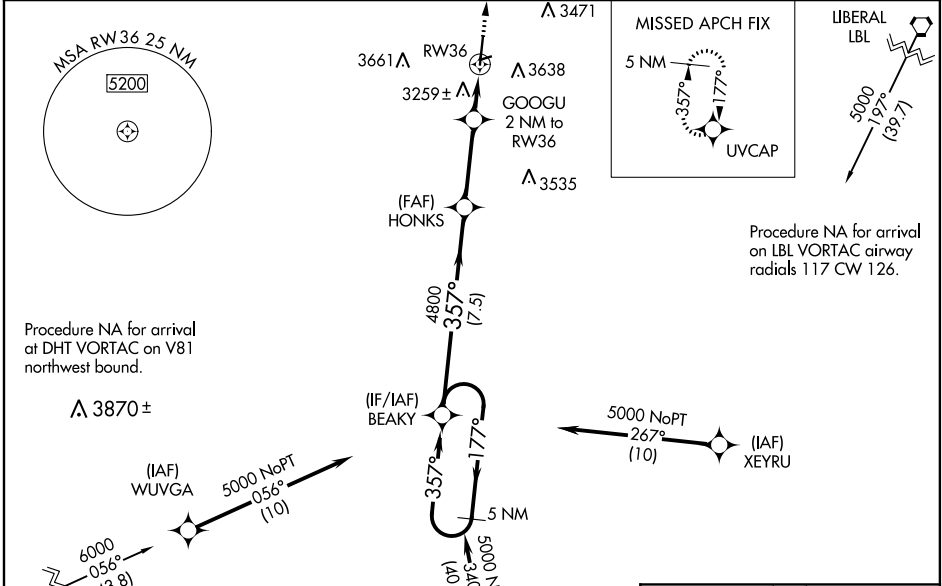
RNAV (GPS) RWY 36

GUYMON MUNI (GUY)

⚠ Baro-VNAV NA when using Liberal altimeter setting. For uncompensated Baro-VNAV systems, LNAV/VNAV NA below -21°C (-5°F) or above 54°C (130°F). When VGSi inop, Straight-in/Circling Rwy 36 procedure NA at night. Circling NA East of Rwy 18-36. DME/DME RNP-0.3 NA. Visibility reduction by helicopters NA. When local altimeter not received, use Liberal altimeter setting and increase all DA 113 feet and all MDA 120 feet, increase LPV all Cats visibility ¼ mile, increase LNAV/VNAV all Cats and LNAV Cat C visibility ⅜ mile. Circling NA to Rwy 6 and 24.

MISSED APPROACH:
Climb to 6000 direct UVCAP and hold.

ASOS 119.925	KANSAS CITY CENTER 134.0 257.865	UNICOM 122.7 (CTAF)
------------------------	--	-------------------------------



CATEGORY	A	B	C	D
LPV DA	3375-1 250 (300-1)			NA
LNAV/VNAV DA	3584-1 5/8 459 (500-1 5/8)			NA
LNAV MDA	3520-1	395 (400-1)	3520-1 1/8 395 (400-1 1/8)	NA
CIRCLING	3580-1	455 (500-1)	3580-1 1/2 455 (500-1 1/2)	NA

SC-1, 25 FEB 2021 to 25 MAR 2021

SC-1, 25 FEB 2021 to 25 MAR 2021