

WAAS CH <b>70602</b> W03A	APP CRS <b>032°</b>	Rwy Idg <b>10502</b> TDZE <b>3680</b> Apt Elev <b>3680</b>
---------------------------------	------------------------	--

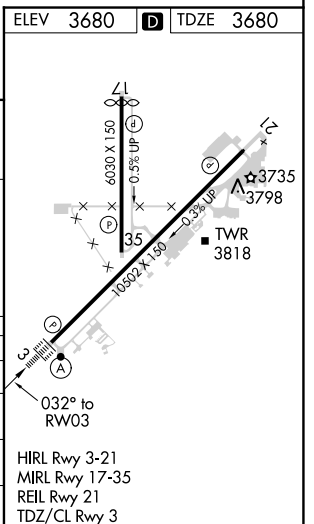
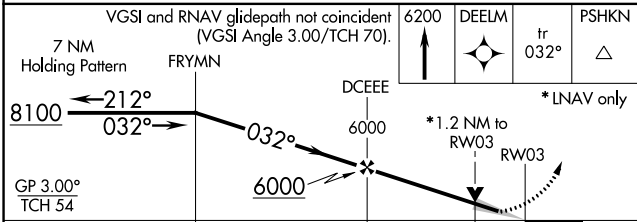
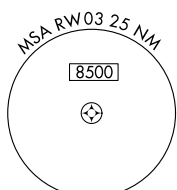
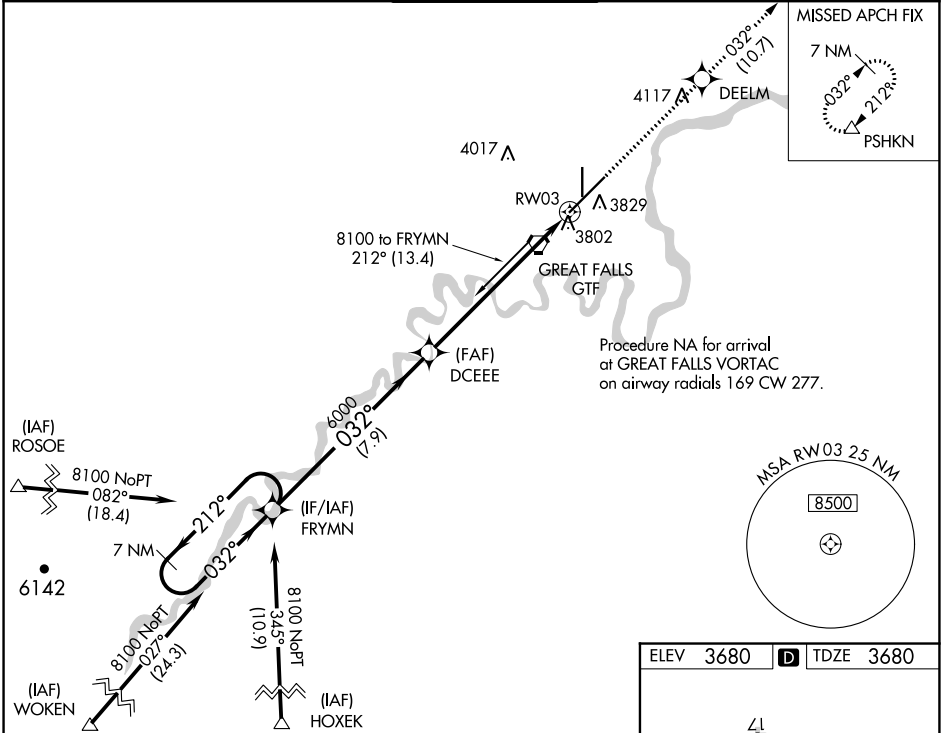
# RNAV (GPS) Y RWY 3

GREAT FALLS INTL (GTF)

**⚠** For uncompensated Baro-VNAV systems, LNAV/VNAV NA below -25°C (-13°F) or above 50°C (123°F). DME/DME RNP-0.3 NA. For inop ALS, increase LNAV/VNAV all Cats visibility to RVR 4500.

**ALS-2** MISSED APPROACH: Climb to 6200 direct DEELM and on track 032° to PSHKN and hold.

ATIS <b>126.6 269.0</b>	GREAT FALLS APP CON <b>128.6 379.175</b>	GREAT FALLS TOWER <b>118.7 282.2</b>	GND CON <b>121.7 348.6</b>	CLNC DEL <b>121.7 348.6</b>
----------------------------	---	---	-------------------------------	--------------------------------



CATEGORY	A	B	C	D
LPV DA	3880/18		200 (200-½)	
LNAV/VNAV DA	3963/24		283 (300-½)	
LNAV MDA	4140/24 460 (500-½)		4140/45 460 (500-¾)	
<b>C</b> CIRCLING	4140-1 460 (500-1)		4320-1¾ 640 (700-1¾) 4420-2¼ 740 (800-2¼)	

NW-1, 25 FEB 2021 to 25 MAR 2021

NW-1, 25 FEB 2021 to 25 MAR 2021