

WAAS CH <b>90221</b> <b>W21A</b>	APP CRS <b>212°</b>	Rwy Idg <b>10502</b> TDZE <b>3669</b> Apt Elev <b>3680</b>
--	------------------------	--

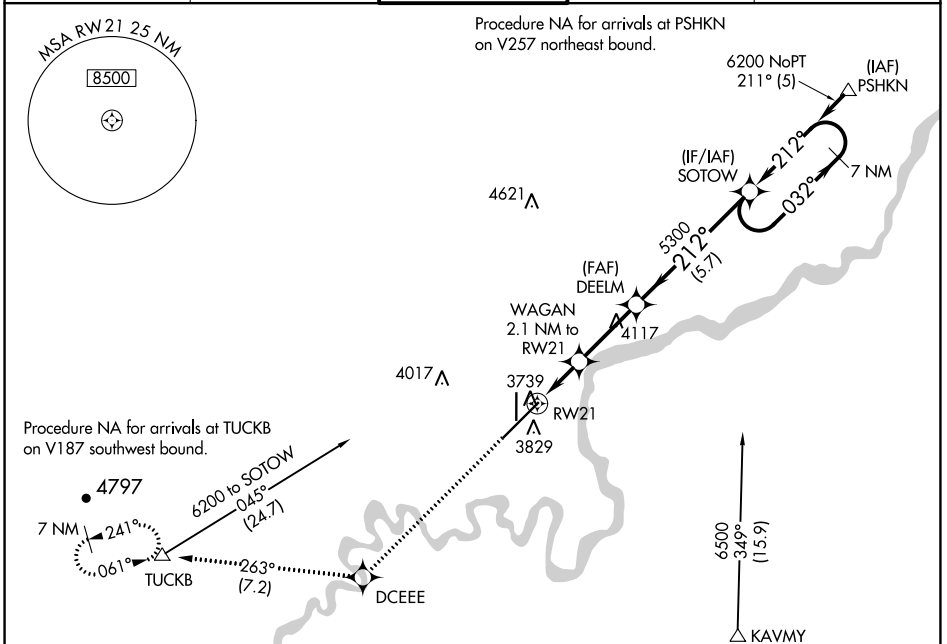
# RNAV (GPS) Y RWY 21

GREAT FALLS INTL (GTF)

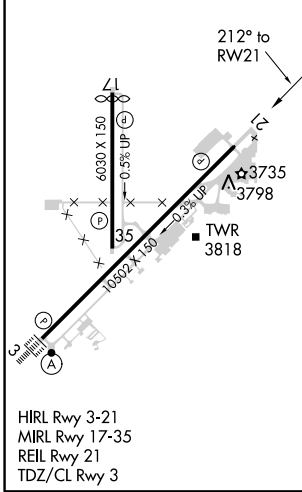
**⚠** For uncompensated Baro-VNAV systems, LNAV/VNAV NA below -24°C (-11°F) or above 49°C (121°F). DME/DME RNP-0.3 NA.  
**❄** -33°C

MISSED APPROACH: Climb to 8000 direct DCEEE and on track 263° to TUCKB and hold, continue climb-in-hold to 8000.

ATIS <b>126.6 269.0</b>	GREAT FALLS APP CON <b>128.6 379.175</b>	GREAT FALLS TOWER <b>118.7 282.2</b>	GND CON <b>121.7 348.6</b>	CLNC DEL <b>121.7 348.6</b>
----------------------------	---	---	-------------------------------	--------------------------------

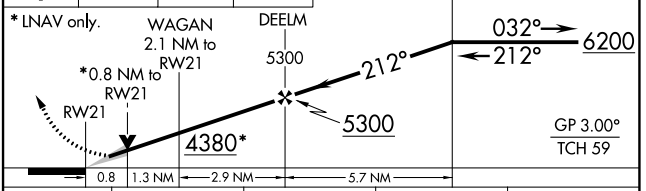


ELEV 3680	<b>D</b>	TDZE 3669
-----------	----------	-----------



8000	DCEEE	tr 263°	TUCKB	VGSI and RNAV glidepath not coincident. (VGSI Angle 3.00/TCH 75).
8000	⬆		△	

SOTOW 7 NM Holding Pattern



CATEGORY	A	B	C	D
LPV DA		3869/40	200 (200-3/4)	
LNAV/VNAV DA		3927/45	258 (300-7/8)	
LNAV MDA	4000/55	331 (400-1)	4000/50	331 (400-1)
<b>C</b> CIRCLING	4120-1 440 (500-1)	4140-1 460 (500-1)	4320-1 3/4 640 (700-1 3/4)	4420-2 1/4 740 (600-2 1/4)

NW-1, 25 FEB 2021 to 25 MAR 2021

NW-1, 25 FEB 2021 to 25 MAR 2021