

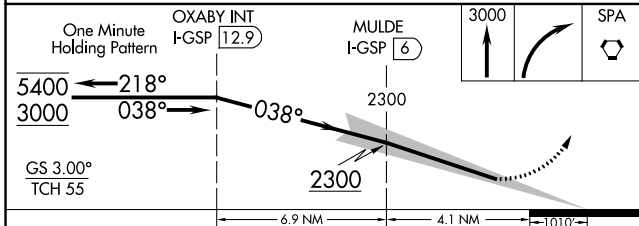
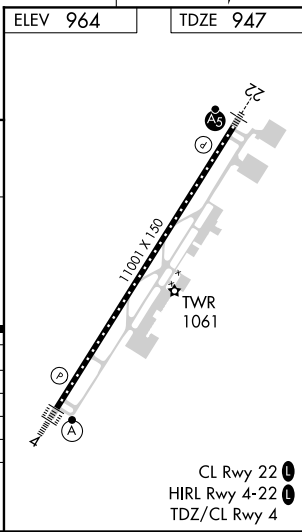
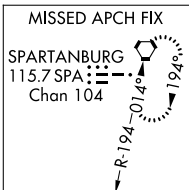
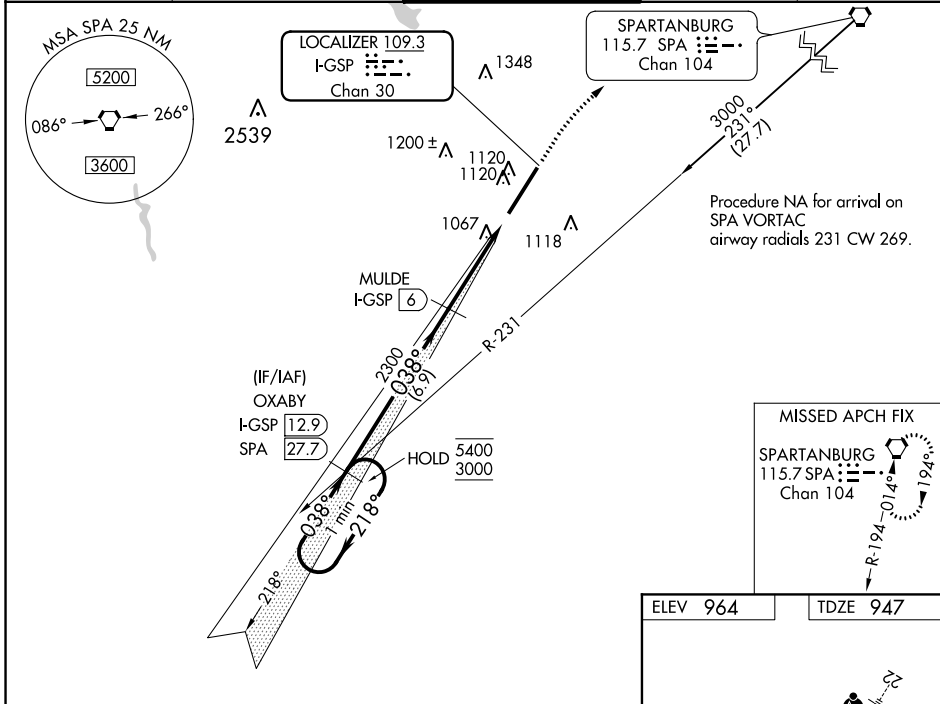
LOC/DME I-GSP <b>109.3</b> Chan 30	APP CRS <b>038°</b>	Rwy Idg <b>1101</b> TDZE <b>947</b> Apt Elev <b>964</b>
--	------------------------	---

# ILS RWY 4 (CAT II & III)

## GREENVILLE SPARTANBURG INTL (GSP)

DME required.		ALSIF-2	MISSED APPROACH: Climb to 3000 then right turn direct SPA VORTAC and hold.	
CAT II: RVR 1000 authorized with specific OPSPEC, MSPEC, or LOA approval and use of autoland or HUD to touchdown. Procedure NA when control tower closed.				

ATIS <b>134.25</b>	GREER APP CON ★ <b>118.8 270.275</b>	GREER TOWER ★ <b>120.1 (CTAF) 251.15</b>	GND CON <b>121.9</b>	UNICOM <b>122.95</b>
-----------------------	---	---	-------------------------	-------------------------



CATEGORY	A	B	C	D
S-ILS 4	CAT II RA 142/12 100 DA 1047			
S-ILS 4	CAT IIIa RVR 07			
S-ILS 4	CAT IIIb RVR 06			
S-ILS 4	CAT IIIc NA			

**CATEGORY II & III ILS - SPECIAL AIRCREW & AIRCRAFT CERTIFICATION REQUIRED**

SE-2, 25 FEB 2021 to 25 MAR 2021

SE-2, 25 FEB 2021 to 25 MAR 2021