


WAAS CH 53610 W05A	APP CRS 052°	Rwy Idg 10001 TDZE 900 Apt Elev 926
--	------------------------	--

RNAV (GPS) RWY 5R

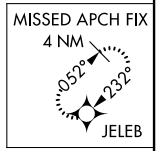
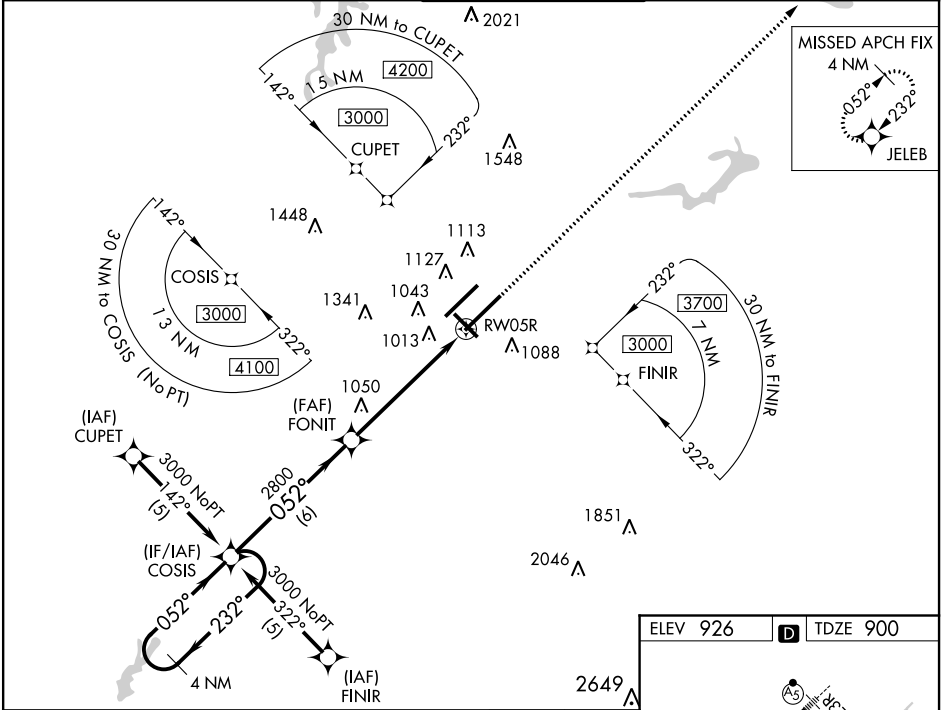
PIEDMONT TRIAD INTL (GSO)

▼ For inop MALSRL, increase LNAV Cat D visibility to RVR 6000. For uncompensated Baro-VNAV systems, LNAV/VNAV NA below -16°C (4°F) or above 47°C (116°F). DME/DME RNP-0.3 NA.
▲ Simultaneous approach authorized with ILS or LOC Rwy 5L, ILS Rwy 5L (CAT II), ILS Rwy 5L (CAT III). Use of FD or AP providing RNAV track guidance required during simultaneous operations. LNAV Procedure NA during simultaneous operations.
 **RVR 1800 authorized with use of FD or AP or HUD to DA.

MALSRL 

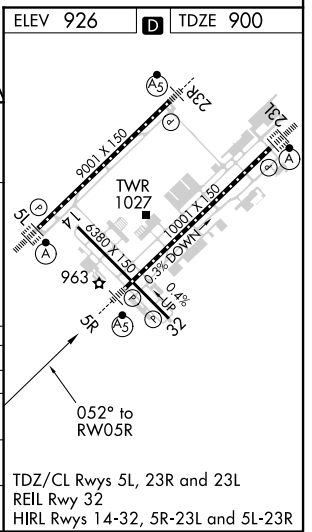
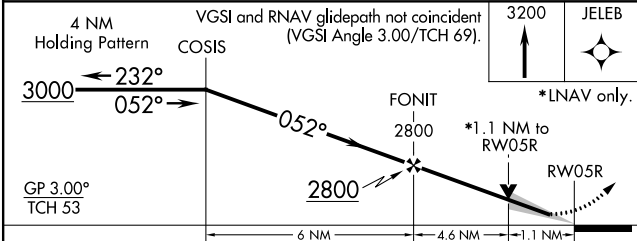
MISSED APPROACH: Climb to 3200 direct JELEB and hold.

D-ATIS 128.55	GREENSBORO APP CON 124.35 269.225 126.6 327.075 (050°-249°)	GREENSBORO TOWER 119.1 290.325	GND CON 121.9 348.6	CLNC DEL 121.75
-------------------------	---	--	-------------------------------	---------------------------



SE-2, 25 FEB 2021 to 25 MAR 2021

SE-2, 25 FEB 2021 to 25 MAR 2021



CATEGORY	A	B	C	D
LPV DA**		1100/24	200 (200-½)	
LNAV/VNAV DA		1321/50	421 (400-1)	
LNAV MDA	1320/24	420 (400-½)	1320/40 420 (400-¾)	1320/50 420 (400-1)
C CIRCLING	1440-1	514 (600-1)	1700-2¼ 774 (800-2¼)	1700-2½ 774 (800-2½)

TDZ/CL Rwy's 5L, 23R and 23L
REIL Rwy 32
HIRL Rwy's 14-32, 5R-23L and 5L-23R