

|  |                        |   |
|--|------------------------|---|
| WAAS<br>CH <b>86515</b><br><b>W05B</b> | APP CRS<br><b>054°</b> | Rwy Idg <b>9000</b><br>TDZE <b>916</b><br>Apt Elev <b>926</b> |
|--|------------------------|---|

# RNAV (GPS) RWY 5L

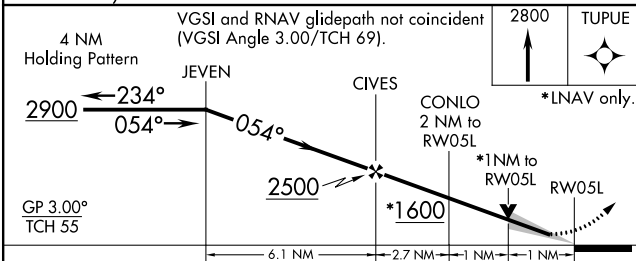
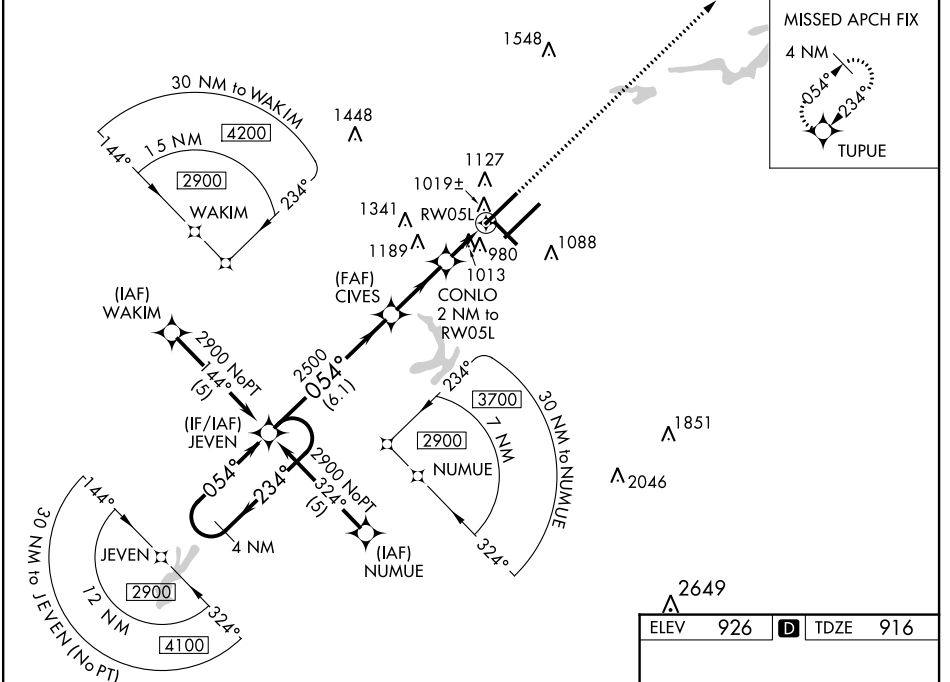
PIEDMONT TRIAD INTL (GSO)

**⚠** For inop ALSF, increase LNAV Cat D visibility to RVR 6000. For uncompensated Baro-VNAV systems, LNAV/VNAV NA below -16°C (4°F) or above 47°C (116°F).  
**⚠** DME/DME RNP-0.3 NA. Simultaneous approach authorized with ILS or LOC Rwy 5R, ILS Rwy 5R (CAT II). Use of FD or AP providing RNAV track guidance required during simultaneous operations. LNAV procedure NA during simultaneous operations.

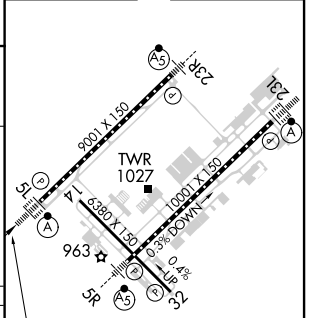


MISSED APPROACH: Climb to 2800 direct TUPUE and hold.

|                         |   |  |                               |                           |
|-------------------------|---|--|-------------------------------|---------------------------|
| D-ATIS<br><b>128.55</b> | GREENSBORO APP CON<br><b>124.35 269.225</b> (250°-049°)<br><b>126.6 327.075</b> (050°-249°) | GREENSBORO TOWER<br><b>119.1 290.325</b> | GND CON<br><b>121.9 348.6</b> | CLNC DEL<br><b>121.75</b> |
|-------------------------|---|--|-------------------------------|---------------------------|



|          |          |
|----------|----------|
| ELEV 926 | TDZE 916 |
|----------|----------|



| CATEGORY          | A                   | B | C                    | D |
|-------------------|---------------------|---|----------------------|---|
| LPV DA            | 1116/18             |   | 200 (200-½)          |   |
| LNAV/VNAV DA      | 1367/50             |   | 451 (500-1)          |   |
| LNAV MDA          | 1300/24 384 (400-½) |   | 1300/50 384 (400-1)  |   |
| <b>C</b> CIRCLING | 1440-1 514 (600-1)  |   | 1700-2¼ 774 (800-2¼) |   |

054° to RW05L

TDZ/CL Rwy 5L, 23R and 23L  
 REIL Rwy 32  
 HIRL Rwy 14-32, 5R-23L and 5L-23R

SE-2, 25 FEB 2021 to 25 MAR 2021

SE-2, 25 FEB 2021 to 25 MAR 2021