


WAAS CH 97710 W23A	APP CRS 232°	Rwy Idg TDZE Apt Elev	9601 889 926
--	------------------------	-----------------------------	---

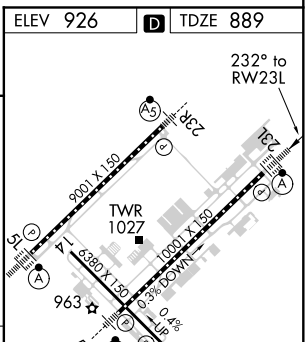
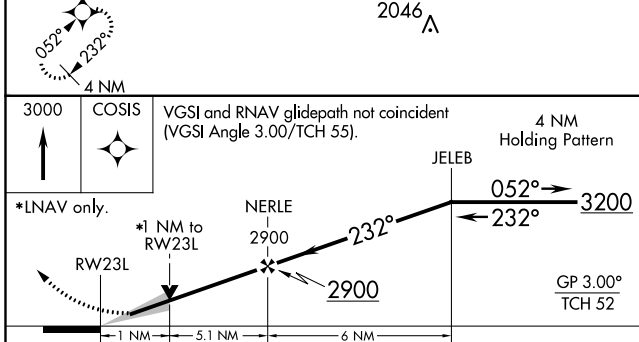
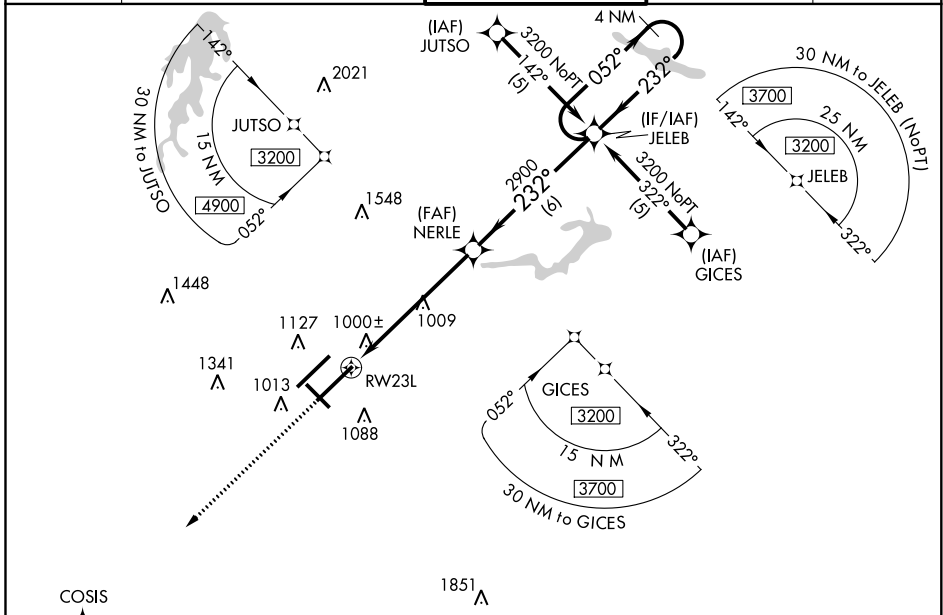
RNAV (GPS) RWY 23L

PIEDMONT TRIAD INTL (GSO)

▼ For inop ALS, increase LNAV Cat C/D visibility to RVR 6000. For uncompensated Baro-VNAV systems, LNAV/VNAV NA below -16°C (4°F) or above 47°C (116°F). DME/DME RNP-0.3 NA.
 ▲ Simultaneous approach authorized with ILS or LOC Rwy 23R. Use of FD or AP providing RNAV track guidance required during simultaneous operations. LNAV procedure NA during simultaneous operations.

ALSF-2

 MISSED APPROACH:
 Climb to 3000 direct
 COSIS and hold.

D-ATIS 128.55	GREENSBORO APP CON 124.35 269.225 (250°-049°) 126.6 327.075 (050°-249°)	GREENSBORO TOWER 119.1 290.325	GND CON 121.9 348.6	CLNC DEL 121.75
-------------------------	---	--	-------------------------------	---------------------------



CATEGORY	A	B	C	D
LPV DA		1089/18	200 (200-½)	
LNAV/VNAV DA		1276/40	387 (400-¾)	
LNAV MDA	1280/24	391 (400-½)	1280/40	391 (400-¾)
C CIRCLING	1440-1	514 (600-1)	1700-2¼ 774 (800-2¼)	1700-2½ 774 (800-2½)

TDZ/CL Rwy 5L, 23R and 23L
 REIL Rwy 32
 HIRL Rwy 14-32, 5R-23L and 5L-23R

SE-2, 25 FEB 2021 to 25 MAR 2021

SE-2, 25 FEB 2021 to 25 MAR 2021