

LOC/DME I-LLG 109.55 Chan 32(Y)	APP CRS 054°	Rwy Idg TDZE 9000 916 Apt Elev 926
--	------------------------	---

ILS RWY 5L (CAT II & III)

PIEDMONT TRIAD INTL (GSO)

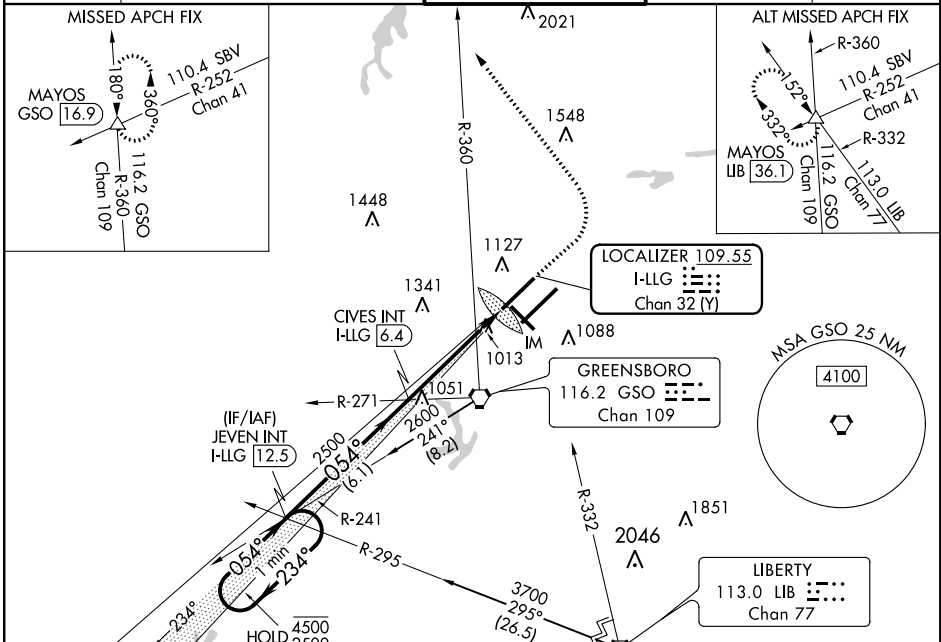
DME or RADAR required for procedure entry at LIB VORTAC.

ALSF-2

MISSED APPROACH: Climb to 1400 then climbing left turn to 3100 on heading 330° and GSO VORTAC R-360 to MAYOS INT/GSO 16.9 DME and hold.

Simultaneous approach authorized with Rwy 5R.

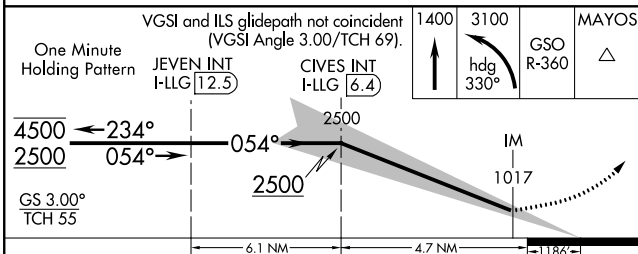
D-ATIS 128.55	GREENSBORO APP CON 124.35 269.225 (250°-049°) 126.6 327.075 (050°-249°)	GREENSBORO TOWER 119.1 290.325	GND CON 121.9 348.6	CLNC DEL 121.75
-------------------------	---	--	-------------------------------	---------------------------



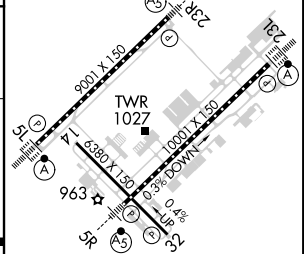
SE-2, 25 FEB 2021 to 25 MAR 2021

SE-2, 25 FEB 2021 to 25 MAR 2021

ELEV 926	D TDZE 916
----------	-------------------



One Minute Holding Pattern	JEVEN INT I-LLG 12.5	CIVES INT I-LLG 6.4	1400	3100	GSO R-360	MAYOS
4500 ← 234°	2500 → 054°	2500	↑	hdg 330°	△	△
GS 3.00° TCH 55	6.1 NM	4.7 NM				



CATEGORY	A	B	C	D
S-ILS 5L	CAT II RA 113/12 100 DA 1016			
S-ILS 5L	CAT III RVR 06			

CATEGORY II & III ILS - SPECIAL AIRCREW & AIRCRAFT CERTIFICATION REQUIRED

TDZ/CL Rwy 5L, 23R and 23L
REIL Rwy 32
HIRL Rwy 14-32, 5R-23L and 5L-23R