

GOLDSBORO, NORTH CAROLINA

TACAN Y RWY 8

TACAN GSB Chan 112	APCH CRS 081°	Rwy Idg TDZE 73 Arpt Elev 109
------------------------------	-------------------------	---

AL-169 [USAF]

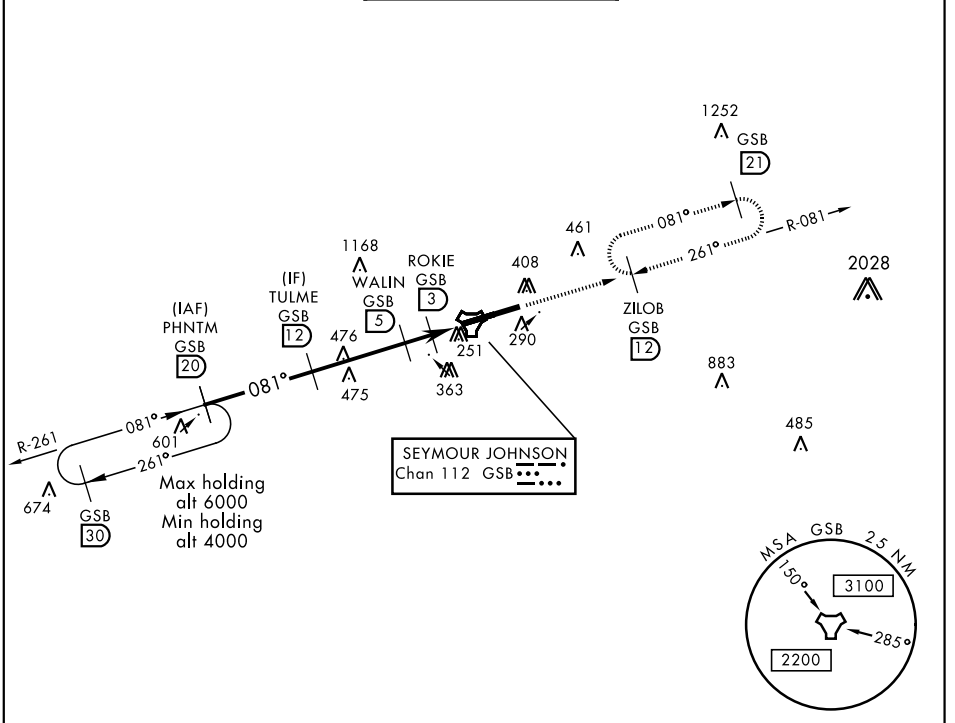
SEYMOUR JOHNSON AFB (KGSB)

▼ * When ALS inop, increase CAT AB RVR to 55, vis to 1 mile, CAT CDE vis to 1 3/8 miles.
 ** Circling N of Rwy 8-26 not authorized.



MISSED APPROACH: Climb to 2300 via GSB R-081 to ZILOB and hold.

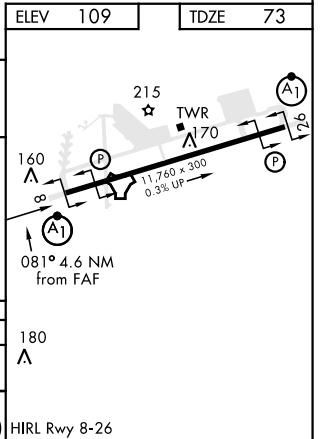
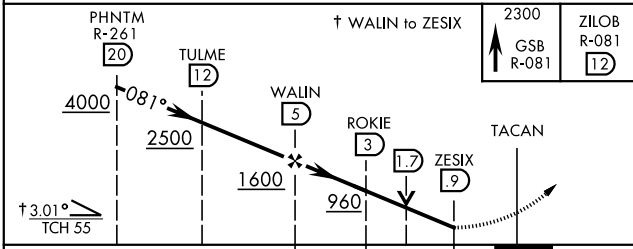
ATIS ★ 317.625	SEYMOUR JOHNSON APP CON 258°-110° 123.7 290.9 111°-257° 119.7 273.6	SEYMOUR JOHNSON TOWER ★ 126.25 370.875	GND CON 138.1 275.8	CLNC DEL 128.025 270.8
--------------------------	---	--	-------------------------------	----------------------------------



SE-2, 25 FEB 2021 to 25 MAR 2021

SE-2, 25 FEB 2021 to 25 MAR 2021

EMERG SAFE ALT 100 NM 3700



CATEGORY	A	B	C	D	E
S-8*	560/24 487 (500-1/2)		560/50 487 (500-1)		
CIRCLING**	620-1 511 (600-1)		680-1 1/2 571 (600-1 1/2)	700-2 591 (600-2)	760-2 1/4 651 (700-2 1/4)

HIRL Rwy 8-26

GOLDSBORO, NORTH CAROLINA

35°20'N-77°58'W

SEYMOUR JOHNSON AFB (KGSB)

Amdt 7 05DEC19

TACAN Y RWY 8