

SEYMOUR-THREE DEPARTURE (GSB3•GSB)

SEYMOUR JOHNSON AFB (KGSB)

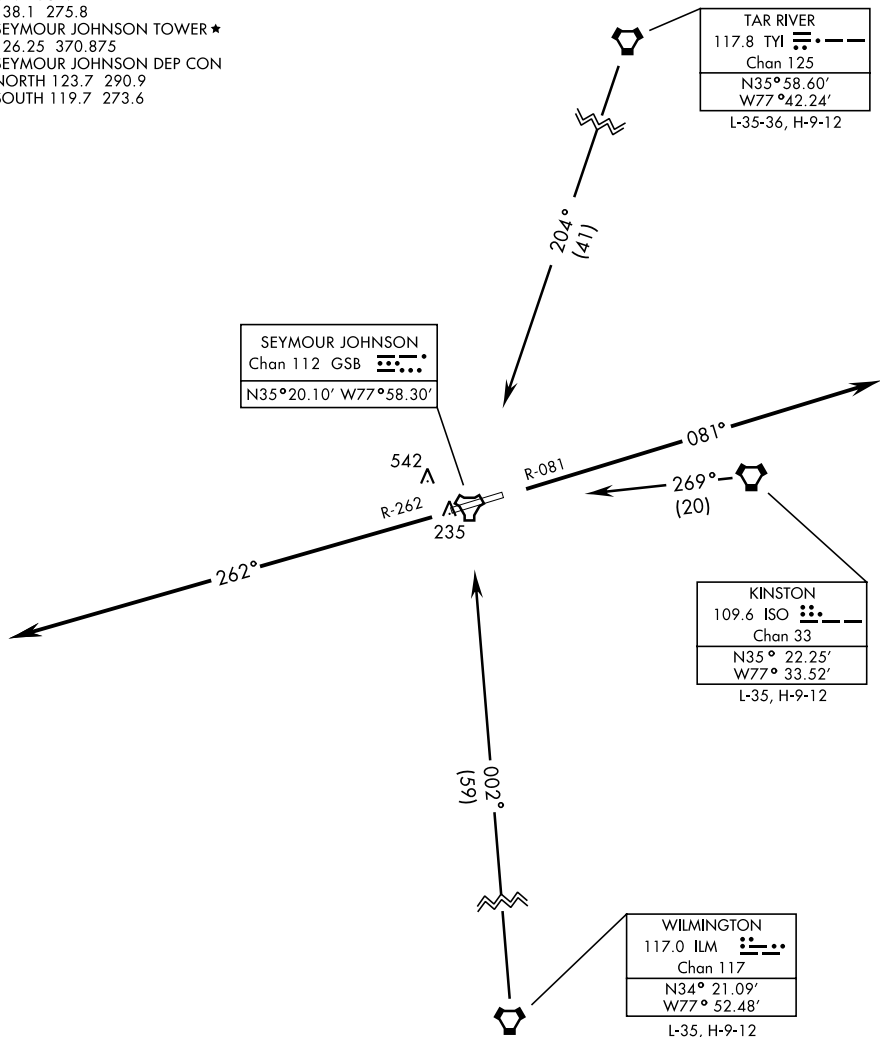
GOLDSBORO, NORTH CAROLINA

ATIS★ 317.625
 CLNC DEL
 128.025 270.8
 GND CON
 138.1 275.8
 SEYMOUR JOHNSON TOWER★
 126.25 370.875
 SEYMOUR JOHNSON DEP CON
 NORTH 123.7 290.9
 SOUTH 119.7 273.6

SHL-169 [USAF]

Rwy	Knots	60	120	180	240	300	360
26	V/V(fpm)	210	420	630	840	1050	1260

Minimum Climb Rate to 500



SE-2, 25 FEB 2021 to 25 MAR 2021

SE-2, 25 FEB 2021 to 25 MAR 2021

DEPARTURE ROUTE DESCRIPTION

TAKE-OFF RWY 8: Track outbound on GSB R-081 until passing 2500', then turn right/left on course climbing to assigned altitude.

TAKE-OFF RWY 26: Track outbound on GSB R-262 until passing 2500', then turn right/left on course climbing to assigned altitude.

SEYMOUR-THREE DEPARTURE (GSB3•GSB)

GOLDSBORO, NORTH CAROLINA

SEYMOUR JOHNSON AFB (KGSB)