

GOLDSBORO, NORTH CAROLINA

ILS or LOC Y RWY 26

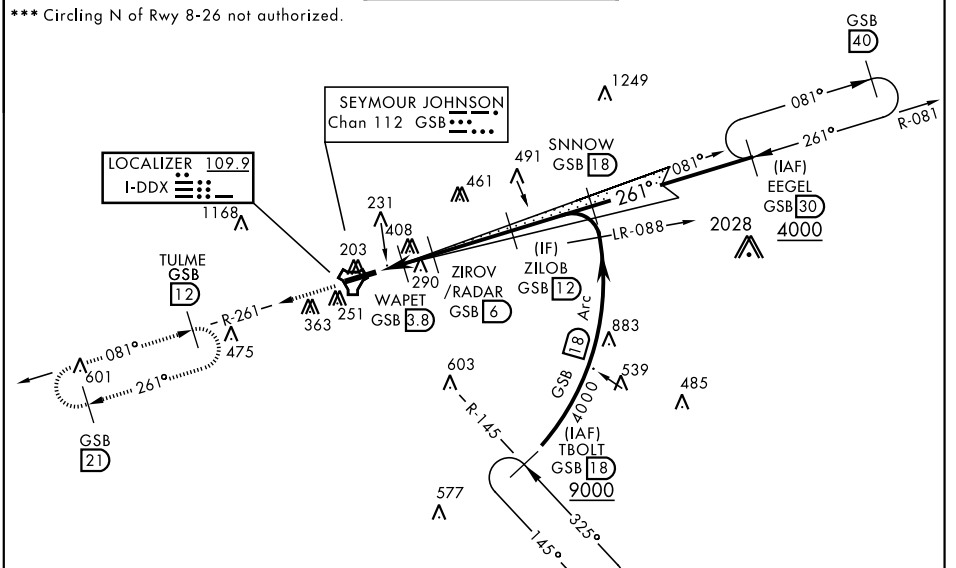
LOC I-DDX 109.9	APCH CRS 261°	Rwy ldg 11,760 TDZE 109 Arprt Elev 109	AL-169 [USAF]	SEYMOUR JOHNSON AFB (KGSB)
---------------------------	-------------------------	---	---------------	----------------------------

▼ * When ALS inop, increase RVR to 40 and vis to 3/4 mile.
 ** When ALS inop, increase CAT AB RVR to 55 and vis to 1 mile, CAT CDE RVR to 60 and vis to 1 1/8 miles.

ALSF-1

MISSED APPROACH: Climb to 2200 via GSB TACAN R-261 to TULME and hold.

ATIS ★ 317.625	SEYMOUR JOHNSON APP CON 258°-110° 123.7 290.9 111°-257° 119.7 273.6	SEYMOUR JOHNSON TOWER ★ 126.25 370.875	GND CON 138.1 275.8	CLNC DEL 128.025 270.8
--------------------------	---	--	-------------------------------	----------------------------------



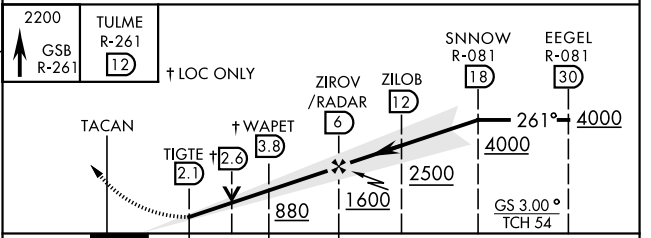
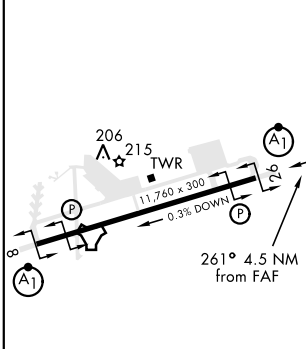
SE-2, 25 FEB 2021 to 25 MAR 2021

SE-2, 25 FEB 2021 to 25 MAR 2021

RADAR or DME REQUIRED

EMERG SAFE ALT 100 NM 3700

ELEV 109	TDZE 109
----------	----------



CATEGORY	A	B	C	D	E
S-ILS 26*	309/24		200	(200-1/2)	
S-LOC 26**	500/24	391 (400-1/2)	500/35	391	(400-3/4)
*** CIRCLING	620-1	511 (600-1)	680-1 1/2 571 (600-1 1/2)	700-2 591 (600-2)	760-2 1/4 651 (700-2 1/4)

GOLDSBORO, NORTH CAROLINA 35°20'N-77°58'W SEYMOUR JOHNSON AFB (KGSB)

Amdt 8 07DEC17

ILS or LOC Y RWY 26