

HI-ILS or LOC Z RWY 26

LOC I-DDX 109.9	APCH CRS 261°	Rwy ldg 11,760 TDZE 109 Arprt Elev 109
---------------------------	-------------------------	----------------------------------------------------------------------------

JAL-169 [USAF]

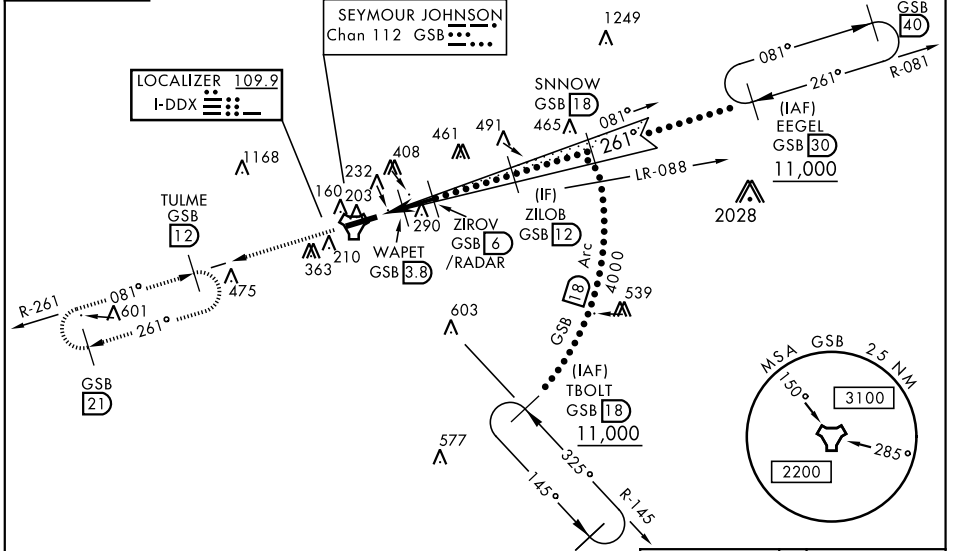
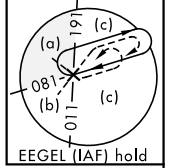
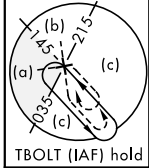
SEYMOUR JOHNSON AFB (KGSB)

▼ * When ALS inop, increase RVR to 40 and vis to 3/4 mile.
 ** When ALS inop, increase RVR to 60 and vis to 1 1/2 miles.
 *** Circling N of Rwy 8-26 not authorized.



MISSED APPROACH: Climb to 2200 via GSB TACAN R-261 to TULME and hold.

ATIS ★ 317.625	SEYMOUR JOHNSON APP CON 258°-110° 123.7 290.9 111°-257° 119.7 273.6	SEYMOUR JOHNSON TOWER ★ 126.25 370.875	GND CON 138.1 275.8	CLNC DEL 128.025 270.8
--------------------------	-----------------------------------------------------------------------------------------	--------------------------------------------------	-------------------------------	----------------------------------

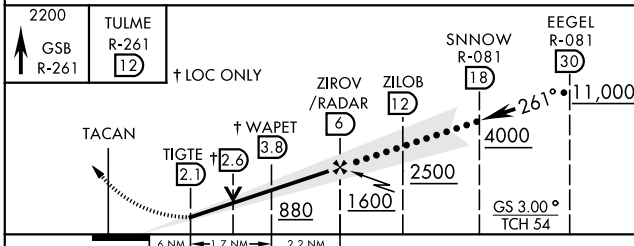


SE-2, 25 FEB 2021 to 25 MAR 2021

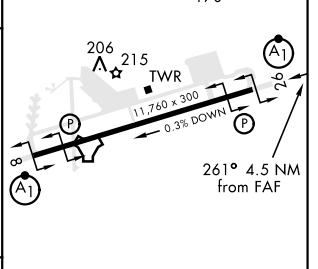
SE-2, 25 FEB 2021 to 25 MAR 2021

RADAR or DME REQUIRED

EMERG SAFE ALT 100 NM 3700



ELEV 109	TDZE 109
----------	----------



CATEGORY	C		D		E
	S-ILS 26*	309/24	200	(200-1/2)	
S-LOC 26**	500/35	391	(400-3/4)		
CIRCLING***	680-1 1/2	700-2	760-2 1/4		
	571 (600-1 1/2)	591 (600-2)	651 (700-2 1/4)		

HIRL Rwy 8-26					
FAF to MAP 3.9 NM					
Knots	120	140	160	180	200
Min:Sec	1:57	1:40	1:28	1:18	1:10

HI-ILS or LOC Z RWY 26