

WAAS CH 40113 W08B	APP CRS 087°	Rwy Idg 10001 TDZE 794 Apt Elev 794
--	------------------------	--

RNAV (GPS) RWY 8R

GERALD R FORD INTL (G.R.R.)

RNP APCH.

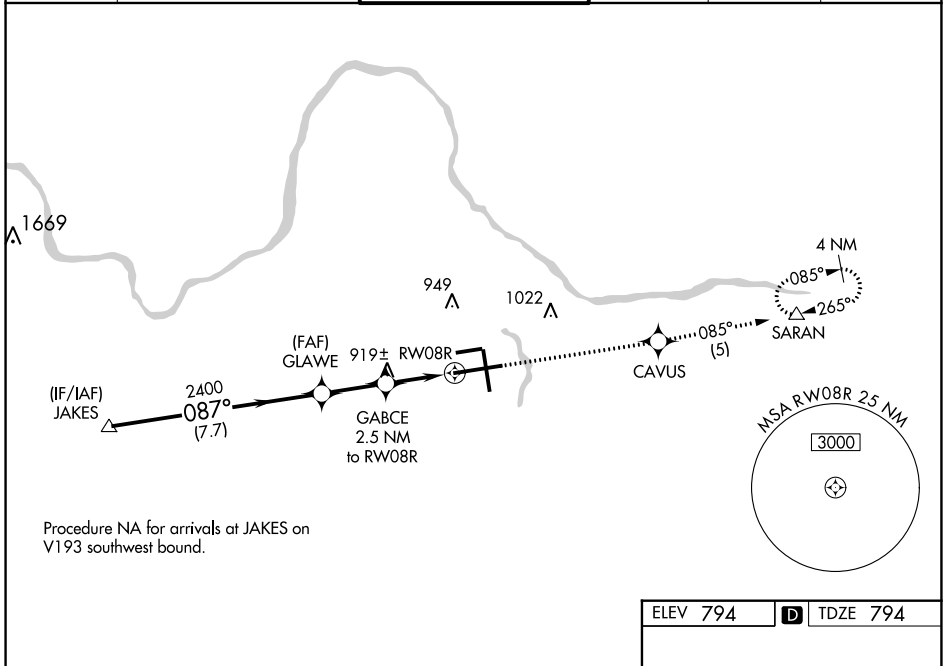
ASR For uncompensated Baro-VNAV systems, LNAV/VNAV NA below -16°C or above 47°C. For inop ALS, increase LNAV Cat D visibility to RVR 6000.
** RVR 1800 authorized with use of FD or AP or HUD to DA.

MALSR



MISSED APPROACH:
Climb to 2700 direct CAVUS and on track 085° to SARAN and hold.

ATIS 118.725	GREAT LAKES APP CON * 128.4 257.6	GRAND RAPIDS TOWER* 135.65 (CTAF) 339.8	GND CON 121.8	CLNC DEL 119.3	UNICOM 122.95
------------------------	---	--	-------------------------	--------------------------	-------------------------

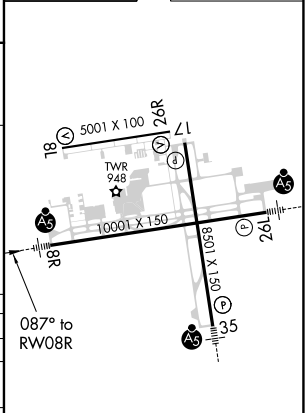
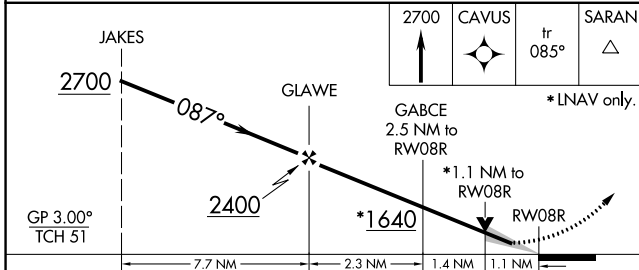


Procedure NA for arrivals at JAKES on V193 southwest bound.

EC-1, 25 FEB 2021 to 25 MAR 2021

EC-1, 25 FEB 2021 to 25 MAR 2021

ELEV 794	D TDZE 794
----------	-------------------



CATEGORY	A	B	C	D
LPV DA **	994/24		200 (200-½)	
LNAV/VNAV DA	1297/50		503 (600-1)	
LNAV MDA	1180/24	386 (400-½)	1180/35 386 (400-¾)	1180/50 386 (400-1)
C CIRCLING	1260-1	466 (500-1)	1340-1½ 546 (600-1½)	1360-2 566 (600-2)

MIRL Rwy 8L-26R **1**
REIL Rws 8L, 17 and 26R **1**
HIRL Rws 8R-26L and 17-35 **1**