

LOC I-DVS <b>111.9</b>	APP CRS <b>357°</b>	Rwy Idg TDZE Apt Elev	<b>8501</b> <b>790</b> <b>794</b>
---------------------------	------------------------	-----------------------------	---

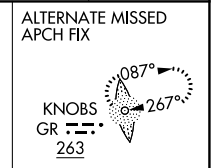
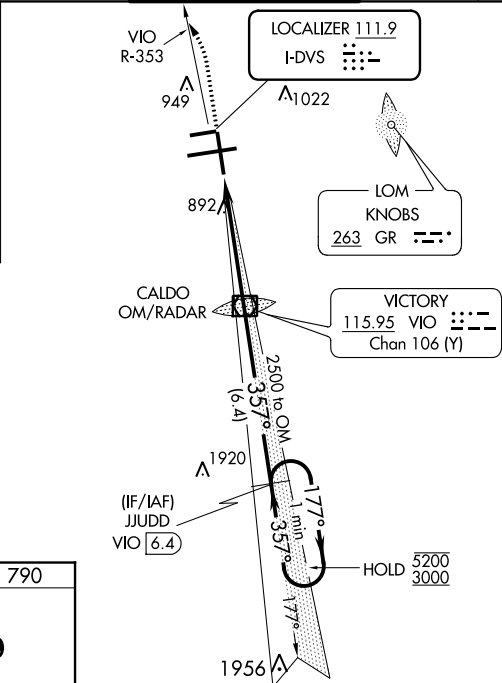
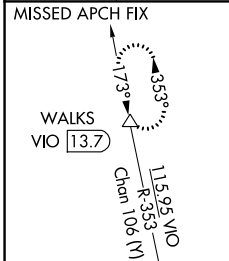
# ILS RWY 35 (SA CAT I & II)

GERALD R FORD INTL (G.R.)

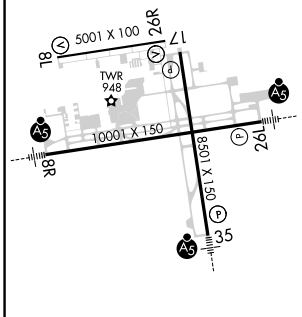
DME required. DME or RADAR required for procedure entry.

<p><b>SA CAT I:</b> Requires specific OPSPEC, MSPEC, or LOA approval and use of HUD to DH.</p> <p><b>SA CAT II:</b> Reduced lighting: requires specific OPSPEC, MSPEC, or LOA approval and use of autoland or HUD to touchdown. Procedure NA when tower closed.</p>	<p>MALS R</p>	<p>MISSED APPROACH: Climb to 1300 then climbing left turn to 3000 on VIO VOR/DME R-353 to WALKS 13.7 DME and hold.</p>
	<p>ASR</p>	<p>MALS R</p>

ATIS <b>118.725</b>	GREAT LAKES APP CON * <b>128.4 257.6</b>	GRAND RAPIDS TOWER * <b>135.65 (CTAF) 0 339.8</b>	GND CON <b>121.8</b>	CLNC DEL <b>119.3</b>	UNICOM <b>122.95</b>
------------------------	---	--	-------------------------	--------------------------	-------------------------



ELEV 794	D	TDZE 790
MIRL Rwy 8L-26R		
REIL Rwy 8L, 17 and 26R		
HIRL Rwy 8R-26L and 17-35		



1300 3000 WALKS VGSi and ILS glidepath not coincident (VGSi Angle 3.00/TCH 74).

VIO VOR/DME CALDO OM/RADAR

One Minute Holding Pattern

177° → 5200  
← 357° 3000

VIO 4.9 2412 2500

GS 3.00° TCH 55

CATEGORY	A	B	C	D
S-ILS 35	SA CAT I RA 160/14 150 DA 940			
S-ILS 35	SA CAT II RA 122/12 100 DA 890			

FAF to MAP 4.9 NM

Knots	60	90	120	150	180
Min:Sec	4:54	3:16	2:27	1:58	1:38

## SA CATEGORY I & II ILS - SPECIAL AIRCREW & AIRCRAFT CERTIFICATION REQUIRED

EC-1, 25 FEB 2021 to 25 MAR 2021

EC-1, 25 FEB 2021 to 25 MAR 2021