

VOR/DME GRI 112.0 Chan 57	APP CRS 353°	Rwy Idg 7002 TDZE 1847 Apt Elev 1847
---	------------------------	---

VOR/DME RWY 35

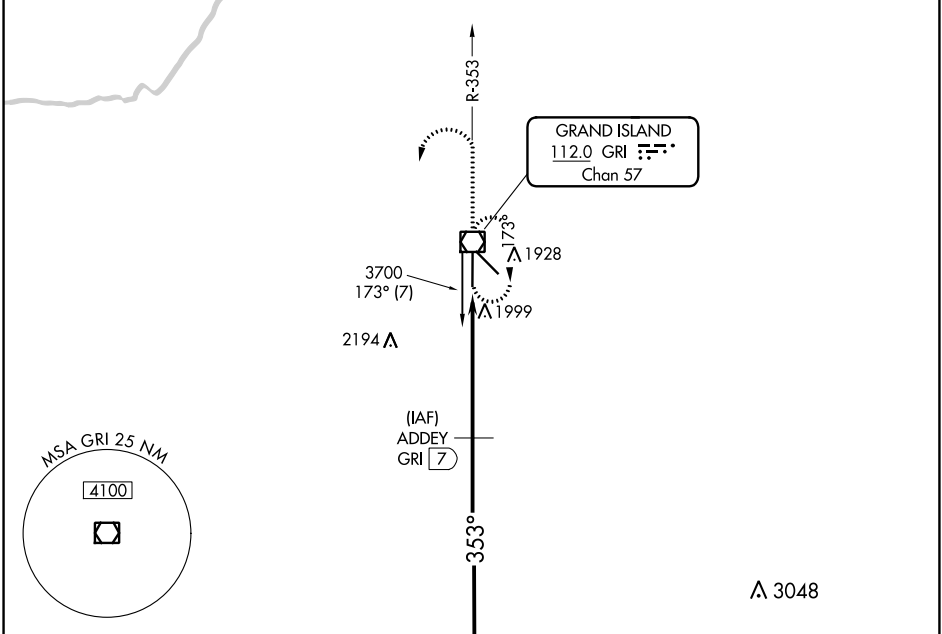
CENTRAL NEBRASKA RGNL (GRI)

VDP NA when using Aurora altimeter setting. When local altimeter setting not received, use Aurora altimeter setting and increase all MDA 60 feet. For inop MALS, increase S-35 Cat D visibility to 1/4 mile.



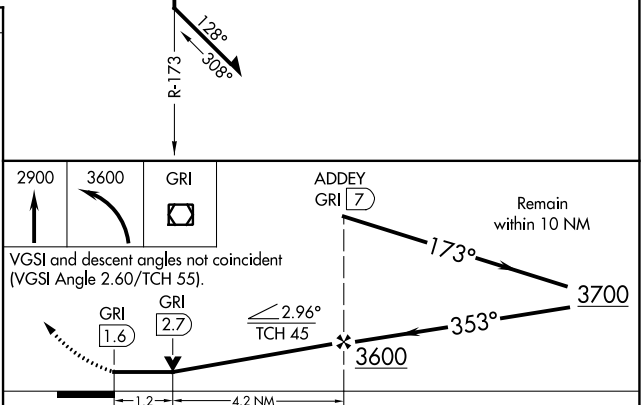
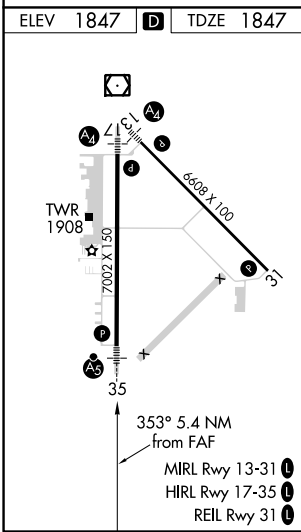
MISSED APPROACH: Climb to 2900, then climbing left turn to 3600 direct GRI VOR/DME and hold.

ATIS 127.4	MINNEAPOLIS CENTER 119.4 278.8	GRAND ISLAND TOWER* 118.2 (CTAF) 0 259.3	GND CON 121.9 259.3	CINC DEL 121.9 126.05 (when tower closed)	UNICOM 122.95
----------------------	--	--	-------------------------------	---	-------------------------



NC-2, 25 FEB 2021 to 25 MAR 2021

NC-2, 25 FEB 2021 to 25 MAR 2021



CATEGORY	A	B	C	D
S-35	2260-1/2	413 (500-1/2)	2260-3/4 413 (500-3/4)	2260-1 413 (500-1)
CIRCLING	2300-1	453 (500-1)	2300-1 1/2 453 (500-1 1/2)	2400-2 553 (600-2)