

VOR/DME GRI 112.0 Chan 57	APP CRS 173°	Rwy Idg TDZE Apt Elev	7002 1844 1847
---	------------------------	-----------------------------	---

VOR RWY 17

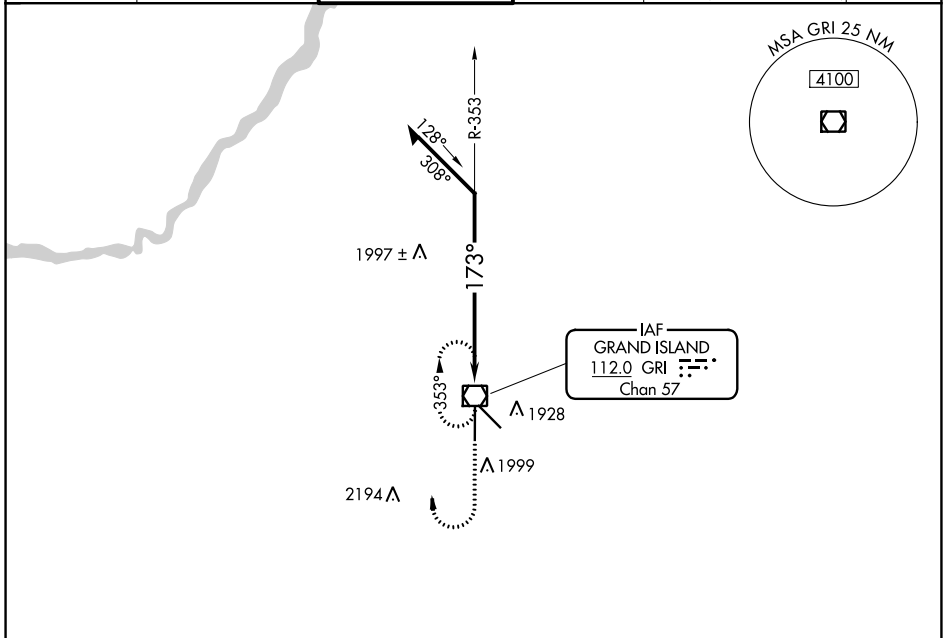
CENTRAL NEBRASKA RGNL (GRI)

When local altimeter setting not received, use Aurora altimeter setting and increase all MDA 60 feet, and increase S-17 Cat C and D visibility ¼ mile. Inop table does not apply to S-17 Cat C.



MISSED APPROACH: Climb to 3600, then right turn direct GRI VOR/DME and hold.

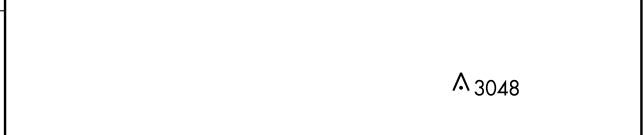
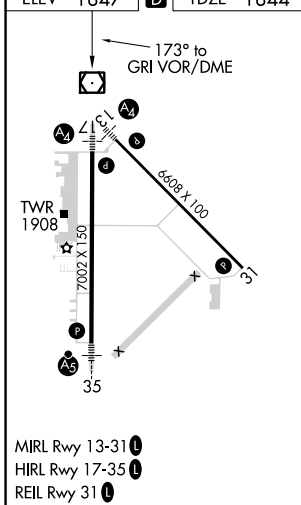
ATIS 127.4	MINNEAPOLIS CENTER 119.4 278.8	GRAND ISLAND TOWER * 118.2 (CTAF) 259.3	GND CON 121.9 259.3	CLNC DEL 121.9 126.05 (when tower closed)	UNICOM 122.95
----------------------	--	---	-------------------------------	---	-------------------------



NC-2, 25 FEB 2021 to 25 MAR 2021

NC-2, 25 FEB 2021 to 25 MAR 2021

ELEV 1847	D	TDZE 1844
-----------	---	-----------



3600 ↑	↷	GRI □
-----------	---	----------

CATEGORY	A	B	C	D
S-17	2300-3/4	456 (500-3/4)	2300-1/4 456 (500-1/4)	2300-1/2 456 (500-1/2)
CIRCLING	2300-1	453 (500-1)	2300-1/2 453 (500-1/2)	2400-2 553 (600-2)