

VOR/DME GPZ 111.4 Chan 51	APP CRS 334°	Rwy Idg TDZE Apt Elev	5756 1356 1356
----------------------------------------	------------------------	-----------------------------	-------------------------------------------

GRAND RAPIDS/
ITASCA COUNTY-GORDON NEWSTROM FIELD (GPZ)

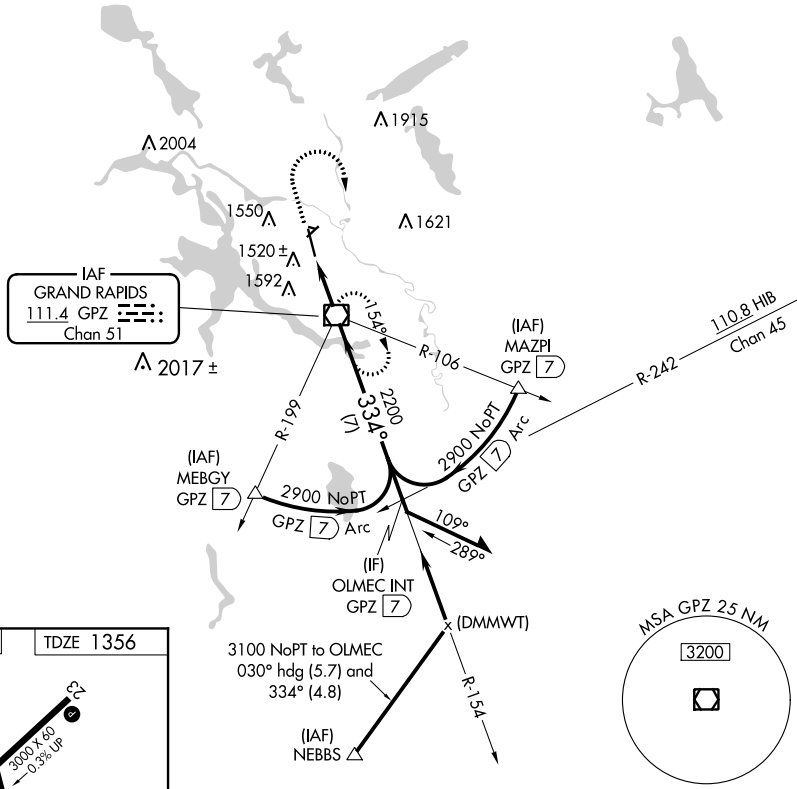
VOR RWY 34

⚠ VDP NA when using Hibbing's altimeter setting. Circling Rwy 5 NA at night. Circling NA for Cat D east of Rwy 16-34. When local altimeter setting not received, use Hibbing altimeter setting and increase all MDAs 80 feet, increase S-34 Cat C visibility 1/8 SM and Circling Cats C/D visibility 1/4 SM.

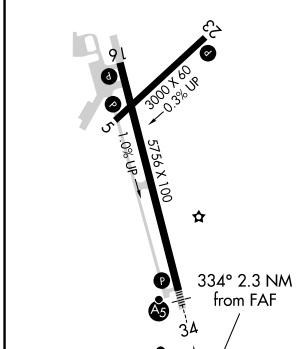


MISSED APPROACH: Climb to 3100 then right turn direct GPZ VOR/DME and hold.

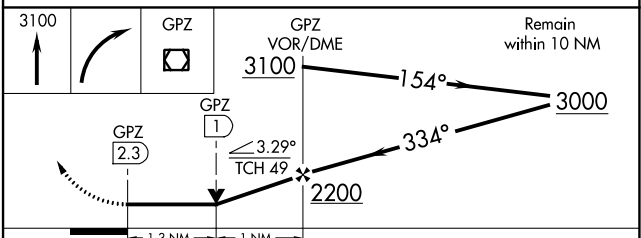
AWOS-3PT 118.425	MINNEAPOLIS CENTER 127.9 281.45	UNICOM 122.8 (CTAF) 0
----------------------------	-------------------------------------------	---------------------------------



ELEV 1356	TDZE 1356
-----------	-----------



FAF to MAP 2.3 NM					
Knots	60	90	120	150	180
Min:Sec	2:18	1:32	1:09	0:55	0:46



CATEGORY	A	B	C	D
S-34	1800-1/2 444 (500-1/2)	1800-7/8 444 (500-7/8)	1800-1 444 (500-1)	1800-1 444 (500-1)
CIRCLING	1900-1 544 (600-1)	1900-1/2 544 (600-1/2)	2000-2 644 (700-2)	2000-2 644 (700-2)

VOR RWY 34

NC-1, 25 FEB 2021 to 25 MAR 2021

NC-1, 25 FEB 2021 to 25 MAR 2021