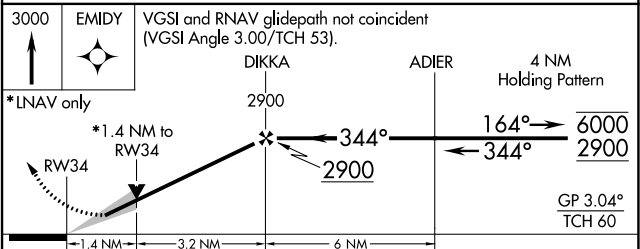
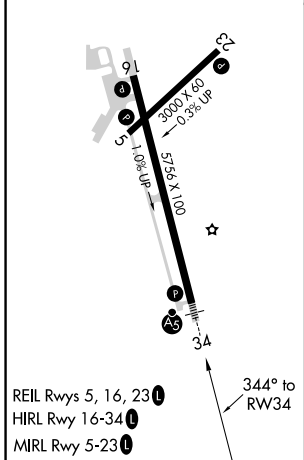
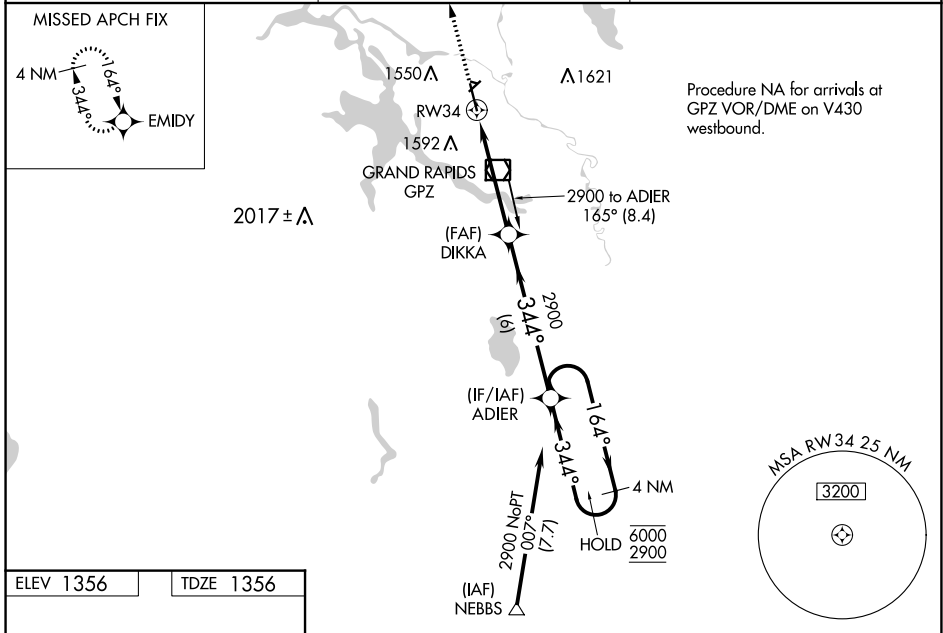


WAAS CH <b>86412</b> <b>W34A</b>	APP CRS <b>344°</b>	Rwy Idg TDZE Apt Elev	<b>5756</b> <b>1356</b> <b>1356</b>
--	------------------------	-----------------------------	---

GRAND RAPIDS/  
ITASCA COUNTY-GORDON NEWSTROM FIELD (GPZ)  
**RNAV (GPS) RWY 34**

RNP APCH. ▼ Circling NA to Rws 10 and 28. Circling NA for Cat D east of Rwy 16-34. Circling Rwy 5 NA at night. For uncompensated Baro-VNAV systems, LNAV/VNAV NA below -17°C or above 49°C. For inop ALS, increase LPV all Cats visibility to 1 SM, increase LNAV/VNAV all Cats visibility to 1½ SM, increase LNAV Cats C and D visibility to 1¾ SM.	MALSR 	MISSED APPROACH: Climb to 3000 direct EMIDY and hold.
---	-----------	---

AWOS-3PT <b>118.425</b>	MINNEAPOLIS CENTER <b>127.9 281.45</b>	UNICOM <b>122.8 (CTAF) 0</b>
----------------------------	---	---------------------------------



CATEGORY	A	B	C	D
LPV DA	1683-½		327 (400-½)	
LNAV/VNAV DA	1928-1½		572 (600-1½)	
LNAV MDA	1860-½ 504 (600-½)		1860-1 504 (600-1)	
<input checked="" type="checkbox"/> CIRCLING	1900-1 544 (600-1)		1900-1½ 2000-2 544 (600-1½) 644 (700-2)	