

JOE POOL TWO DEPARTURE

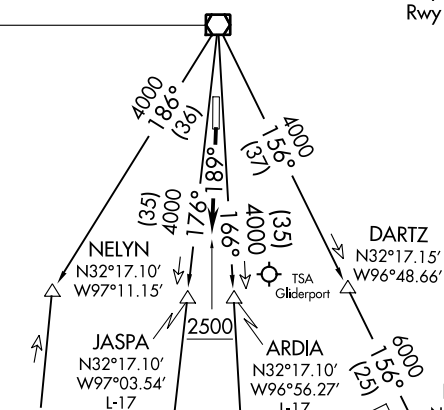
GND CON
121.15
GRAND PRAIRIE TOWER ★
128.55 (CTAF)
REGIONAL DEP CON
135.975 379.9

TAKEOFF MINIMUMS

Rwy 17: Standard
Rwy 35: NA - ATC.

MAVERICK
113.1 TTT
Chan 78
N32°52.15'
W97°02.43'

WACO
115.3 ACT
Chan 100
N31°39.73'
W97°16.14'
L-19, H-6



SC-2, 25 FEB 2021 to 25 MAR 2021

SC-2, 25 FEB 2021 to 25 MAR 2021

NOTE: RADAR and DME required.

(NARRATIVE ON FOLLOWING PAGE)

NOTE: Chart not to scale.

JOE POOL TWO DEPARTURE