

NDB GYG <b>359</b>	APP CRS <b>142°</b>	Rwy Idg TDZE Apt Elev	<b>5005</b> <b>1154</b> <b>1158</b>
-----------------------	------------------------	-----------------------------	---

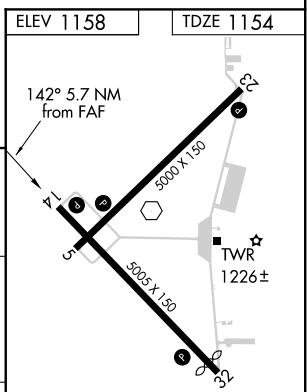
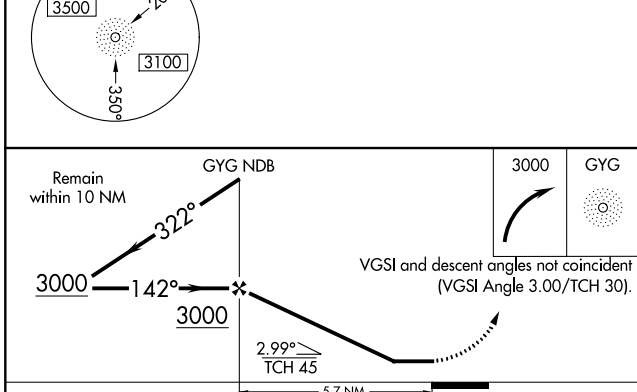
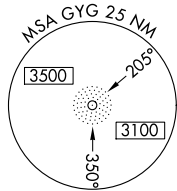
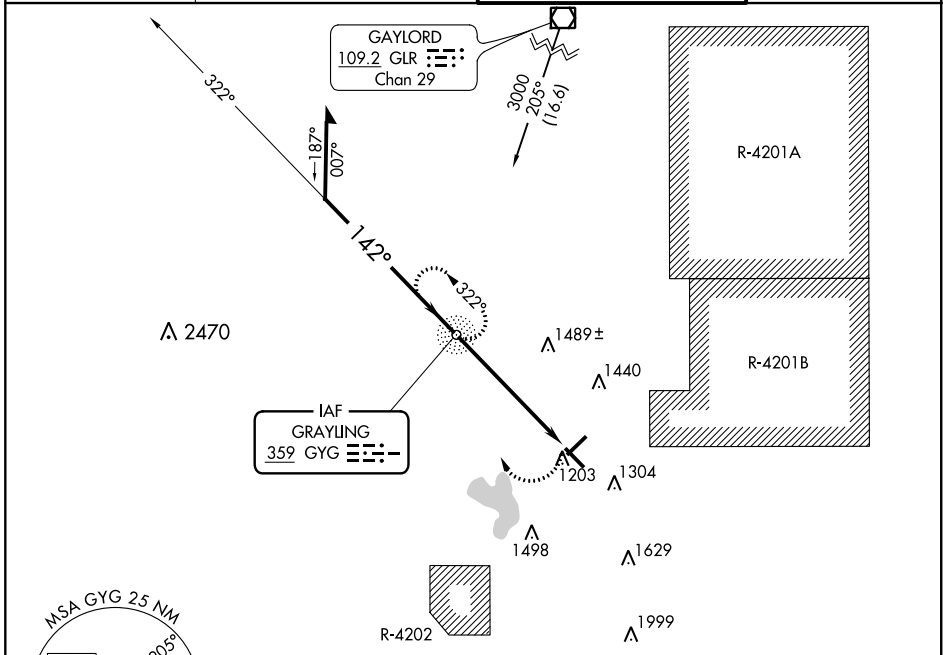
# NDB RWY 14

GRAYLING AAF (GOV)

**⚠** Circling Rwy 5, 23, 32 NA at night. Rwy 14 helicopter visibility reduction below 3/4 SM NA.  
**⚠** NA When local altimeter setting not received, use Houghton Lake altimeter setting and increase all MDAs 60 feet and visibility Cat B/C/D 1/2 SM.

**MISSED APPROACH:**  
Climbing right turn to 3000 direct GYG NDB and hold.

ATIS <b>119.075</b>	MINNEAPOLIS CENTER <b>125.475 269.45</b>	GRAYLING TOWER ★ <b>126.2 (CTAF) 0</b>	GND CON <b>121.9</b>
------------------------	---	---	-------------------------



CATEGORY	A	B	C	D
S-14	1880-1	726 (800-1)	1880-2 726 (800-2)	1880-2 1/4 726 (800-2 1/4)
CIRCLING	1880-1	722 (800-1)	1880-2 722 (800-2)	1880-2 1/4 722 (800-2 1/4)

FAF to MAP 5.7 NM

Knots	60	90	120	150	180
Min:Sec	5:42	3:48	2:51	2:17	1:54

EC-1, 25 FEB 2021 to 25 MAR 2021

EC-1, 25 FEB 2021 to 25 MAR 2021