

WAAS CH <b>53709</b> <b>W07A</b>	APP CRS <b>068°</b>	Rwy Idg TDZE Apt Elev	<b>4745</b> <b>3710</b> <b>3732</b>
--	------------------------	-----------------------------	---

# RNAV (GPS) RWY 7

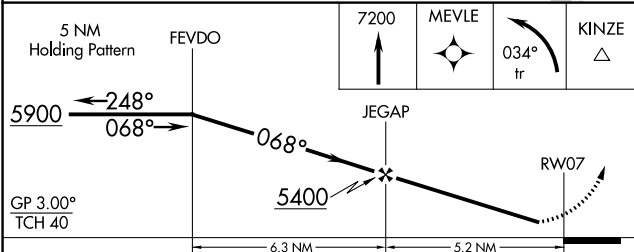
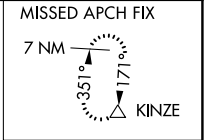
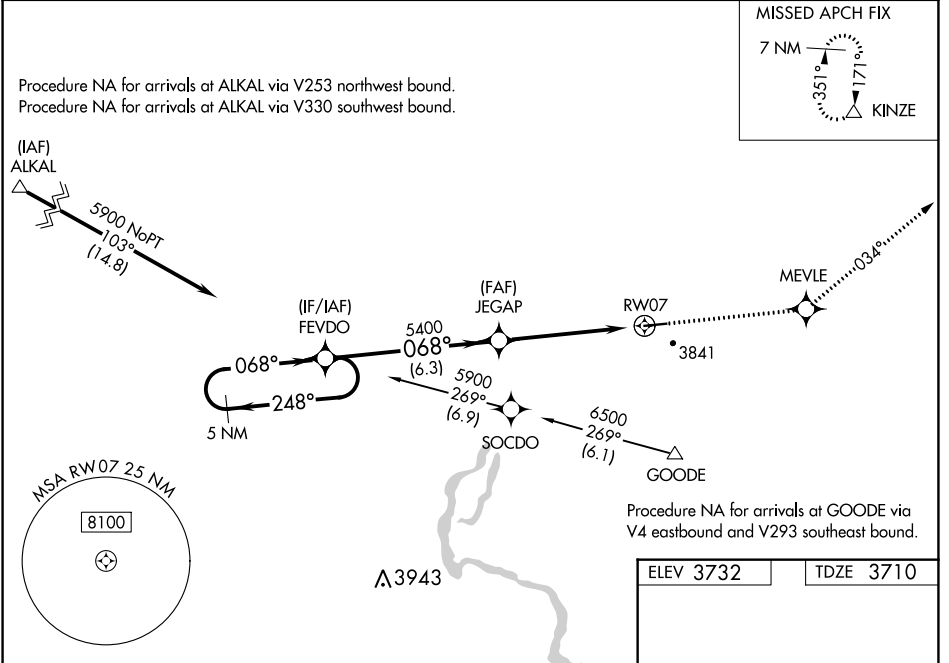
GOODING MUNI (GNG)

RNP APCH.

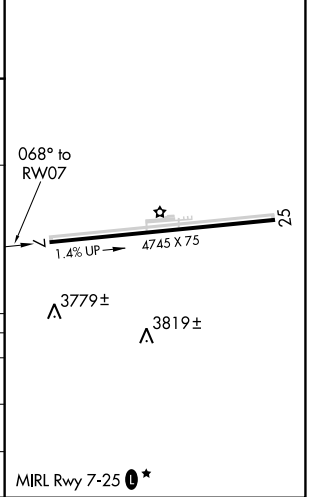
**▼** Rwy 7 helicopter visibility reduction below 3/4 SM NA. Baro-VNAV NA when using Jerome County altimeter setting. For uncompensated Baro-VNAV systems, LNAV/VNAV NA below -22°C or above 41°C. Obtain local altimeter setting on CTAF; when not received, use Jerome County altimeter setting and increase all DA 86 feet and all MDA 100 feet. Increase LPV visibility 1/4 SM all Cats, LNAV/VNAV visibility 1/2 SM all Cats, LNAV visibility Cat C and D 1/2 SM.

**▲** MISSED APPROACH: Climb to 7200 direct MEVLE and left turn via 034° track to KINZE and hold.

AWOS-3PT <b>124.175</b>	SALT LAKE CENTER <b>118.05 363.0</b>	UNICOM <b>122.8 (CTAF) 0*</b>
----------------------------	---	----------------------------------



ELEV 3732	TDZE 3710
-----------	-----------



CATEGORY	A	B	C	D
LPV DA	3960-1 250 (300-1)			
LNAV/VNAV DA	4049-1 1/4 339 (400-1 1/4)			
LNAV MDA	4120-1 410 (400-1)	4120-1 1/4 410 (400-1 1/4)		

NW-1, 25 FEB 2021 to 25 MAR 2021

NW-1, 25 FEB 2021 to 25 MAR 2021