

WAAS CH 45909 W25A	APP CRS 248°	Rwy Idg 4745 TDZE 3732 Apt Elev 3732
--	------------------------	---

RNAV (GPS) RWY 25

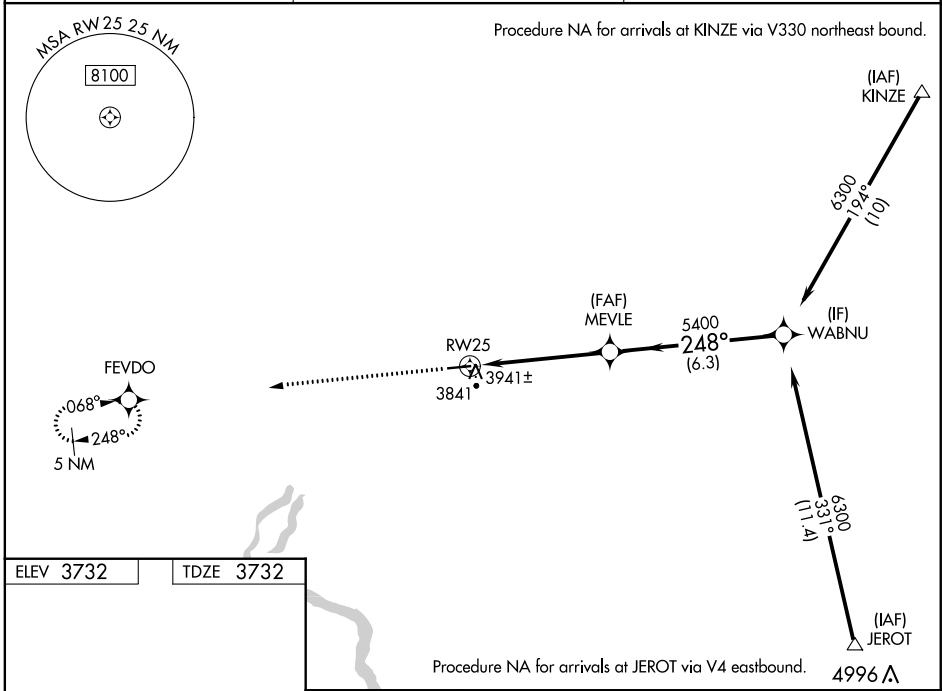
GOODING MUNI (GNG)

RNP APCH.

⚠ Rwy 25 helicopter visibility reduction below 3/4 SM NA. Baro-VNAV NA when using Jerome County altimeter setting. For uncompensated Baro-VNAV systems, LNAV/VNAV NA below -22°C or above 41°C. Obtain local altimeter setting on CTAF; when not received, use Jerome County altimeter setting and increase all DA 86 feet and all MDA 100 feet. Increase LPV visibility 1/4 mile all Cats, LNAV/VNAV visibility 1/4 mile all Cats, LNAV visibility Cat C and D 1/4 mile. Night landing Rwy 25 NA for Cat C and D aircraft.

MISSED APPROACH: Climb to 5900 direct FEVDO and hold.

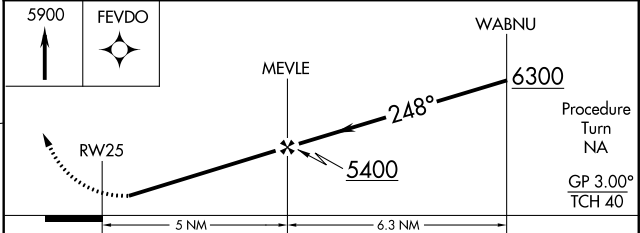
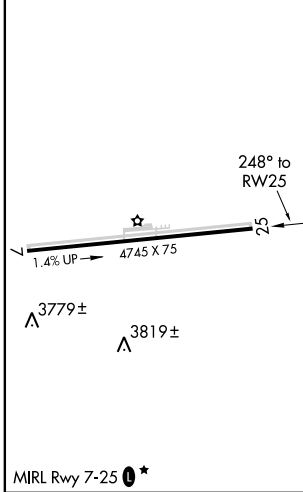
AWOS-3PT 124.175	SALT LAKE CENTER 118.05 363.0	UNICOM 122.8 (CTAF) 0*
----------------------------	---	----------------------------------



NW-1, 25 FEB 2021 to 25 MAR 2021

NW-1, 25 FEB 2021 to 25 MAR 2021

ELEV 3732	TDZE 3732
-----------	-----------



CATEGORY	A	B	C	D
LPV DA	4006-1 274 (300-1)			
LNAV/VNAV DA	4211-1 3/4 479 (500-1 3/4)			
LNAV MDA	4200-1 468 (500-1)	4200-1 1/4 468 (500-1 1/4)	4200-1 1/2 468 (500-1 1/2)	4200-1 1/2 468 (500-1 1/2)