

WAAS CH 72918 W35A	APP CRS 350°	Rwy Idg TDZE Apt Elev	5002 3278 3315
--	------------------------	-----------------------------	---

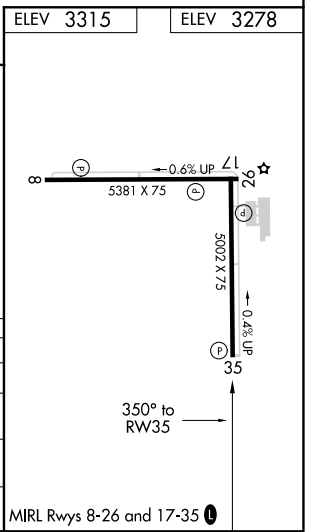
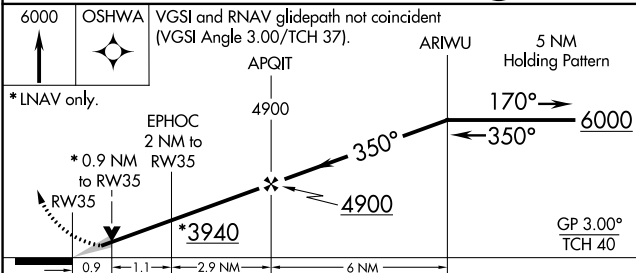
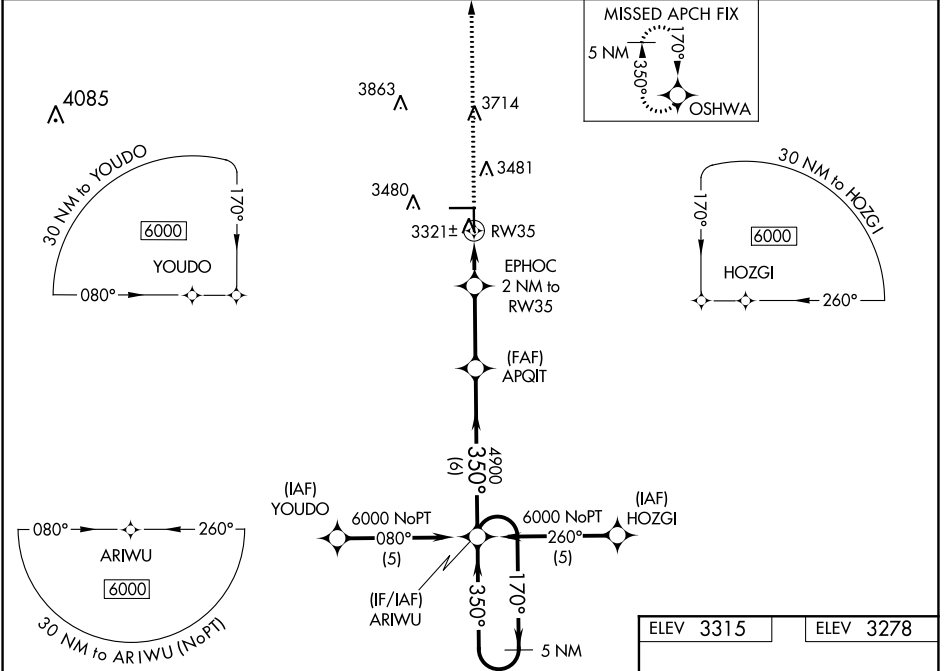
RNAV (GPS) RWY 35

GAINES COUNTY (GNC)

⚠ For uncompensated Baro-VNAV systems, LNAV/VNAV NA below -21°C (-5°F) or above 54°C (130°F).
⚠ DME/DME RNP-0.3 NA. When local altimeter setting not received, use Midland Intl Air and Space Port altimeter setting and increase all DA 177 feet, all MDA 180 feet, increase LPV all Cats and LNAV Cat C visibility 1/2 mile, LNAV/VNAV all Cats and Circling Cat C visibility 3/4 mile. Baro-VNAV and VDP NA when using Midland Intl Air and Space Port altimeter setting.

MISSED APPROACH: Climb to 6000 direct OSHWA and hold, continue climb-in-hold to 6000.

AWOS-3 118.075	FORT WORTH CENTER 132.6 269.05	UNICOM 122.8 (CTAF) ①
--------------------------	--	--



CATEGORY	A	B	C	D
LPV DA	3528-1	250 (300-1)		NA
LNAV/VNAV DA	3591-1 1/4	313 (300-1 1/4)		NA
LNAV MDA	3580-1	302 (300-1)		NA
CIRCLING	3840-1	525 (600-1)	3880-1 1/2 565 (600-1 1/2)	NA

SC-2, 25 FEB 2021 to 25 MAR 2021

SC-2, 25 FEB 2021 to 25 MAR 2021