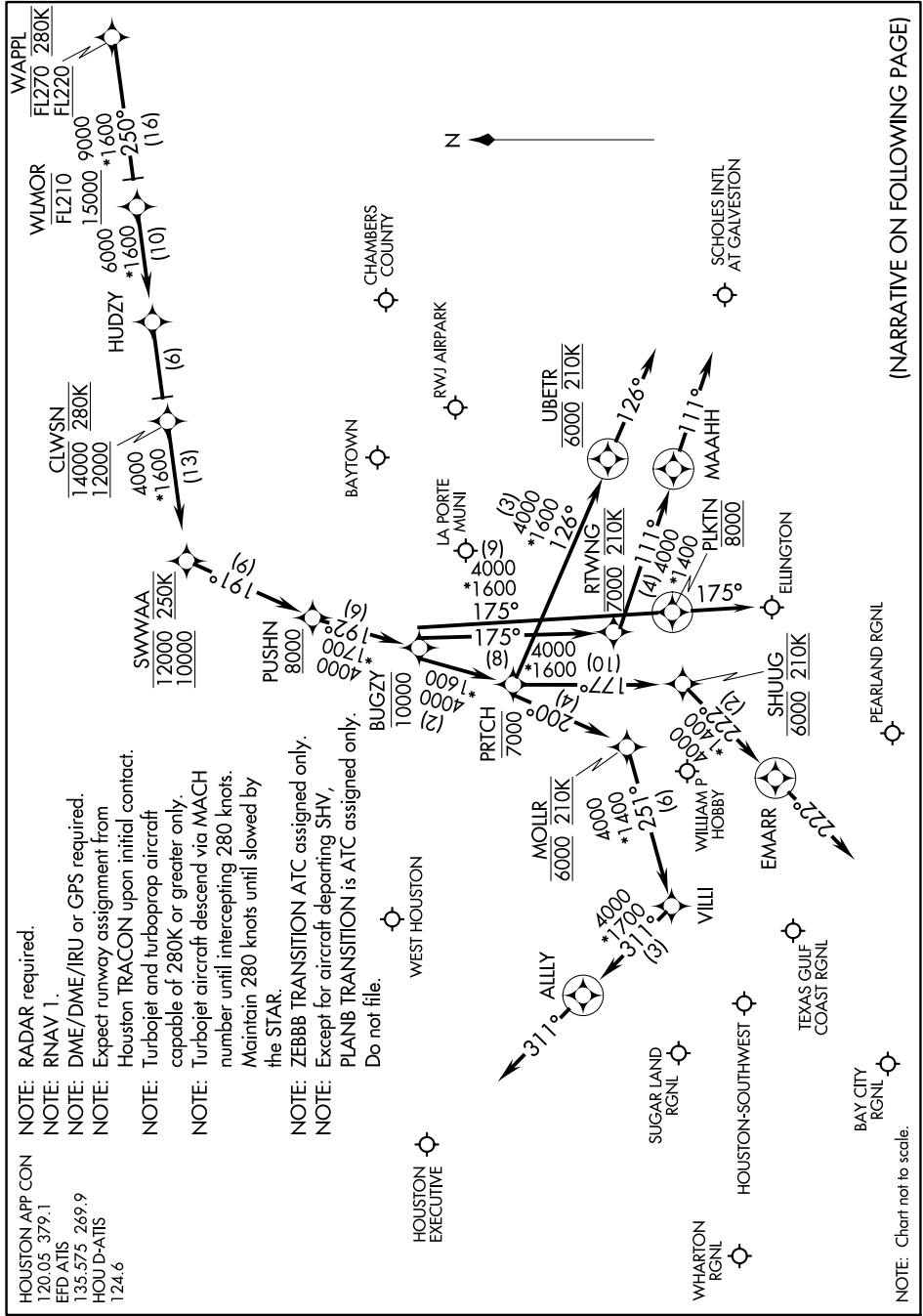


WAPPL FIVE ARRIVAL (RNAV) Arrival Routes

SC-5, 25 FEB 2021 to 25 MAR 2021

- HOUSTON APP CON 120.05 379.1
 EFD ATIS 135.575 269.9
 HOJ D-ATIS 124.6
- NOTE: RADAR required.
 NOTE: RNAV 1.
 NOTE: DME/DME/IRU or GPS required.
 NOTE: Expect runway assignment from Houston TRACON upon initial contact.
 NOTE: Turbojet and turboprop aircraft capable of 280K or greater only.
 NOTE: Turbojet aircraft descend via MACH number until intercepting 280 knots. Maintain 280 knots until slowed by the STAR.
 NOTE: ZEBB TRANSITION ATC assigned only. Except for aircraft departing SHV, PLANB TRANSITION is ATC assigned only. Do not file.
 NOTE: WEST HOUSTON



NOTE: Chart not to scale.

(NARRATIVE ON FOLLOWING PAGE)

SC-5, 25 FEB 2021 to 25 MAR 2021

WAPPL FIVE ARRIVAL (RNAV) Arrival Routes