

# LURIC SEVEN DEPARTURE (RNAV)

ASOS  
 119.275  
 CLNC DEL (When twr closed)  
 135.35  
 GND CON  
 118.625  
 GALVESTON TOWER ★  
 120.575 (CTAF)  
 HOUSTON DEP CON  
 134.45 284.0

**TOP ALTITUDE: ASSIGNED BY ATC**

NOTE: RADAR required.  
 NOTE: DME/DME/IRU or GPS required.  
 NOTE: RNAV 1.

### TAKEOFF MINIMUMS

Rwys 14, 18, 32, 36:

Standard with minimum climb of 500' per NM to 520.

### DEPARTURE ROUTE DESCRIPTION

TAKEOFF RWY 14: Climb heading 138° to 520 for RADAR vectors to KNTKY, thence . . . .

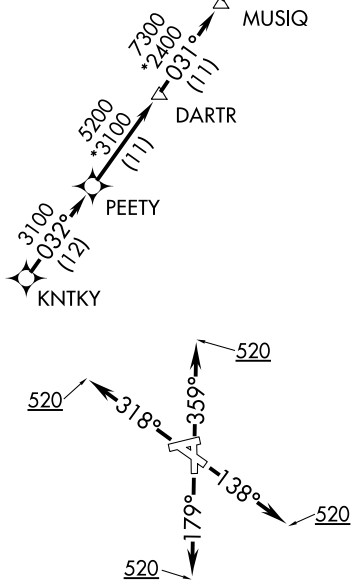
TAKEOFF RWY 18: Climb heading 179° to 520 for RADAR vectors to KNTKY, thence . . . .

TAKEOFF RWY 32: Climb heading 318° to 520 for RADAR vectors to KNTKY, thence . . . .

TAKEOFF RWY 36: Climb heading 359° to 520 for RADAR vectors to KNTKY, thence . . . .

. . . . on track 032° to PEETY, then on track 032° to DARTR, then on track 031° to MUSIQ, then on track 031° to CLAVN, then on track 031° to VELCO, then on track 031° to ENJOY, then on track 031° to LURIC, then on (transition). Maintain ATC assigned altitude. Expect filed altitude 10 minutes after departure.

HAWES TRANSITION (LURIC7.HAWES)  
ORRTH TRANSITION (LURIC7.ORRTH)



NOTE: Chart not to scale.

SC-5, 25 FEB 2021 to 25 MAR 2021

SC-5, 25 FEB 2021 to 25 MAR 2021