

WAAS CH 77611 W36A	APP CRS 357°	Rwy Idg 7019 TDZE 130 Apt Elev 131
--	------------------------	---

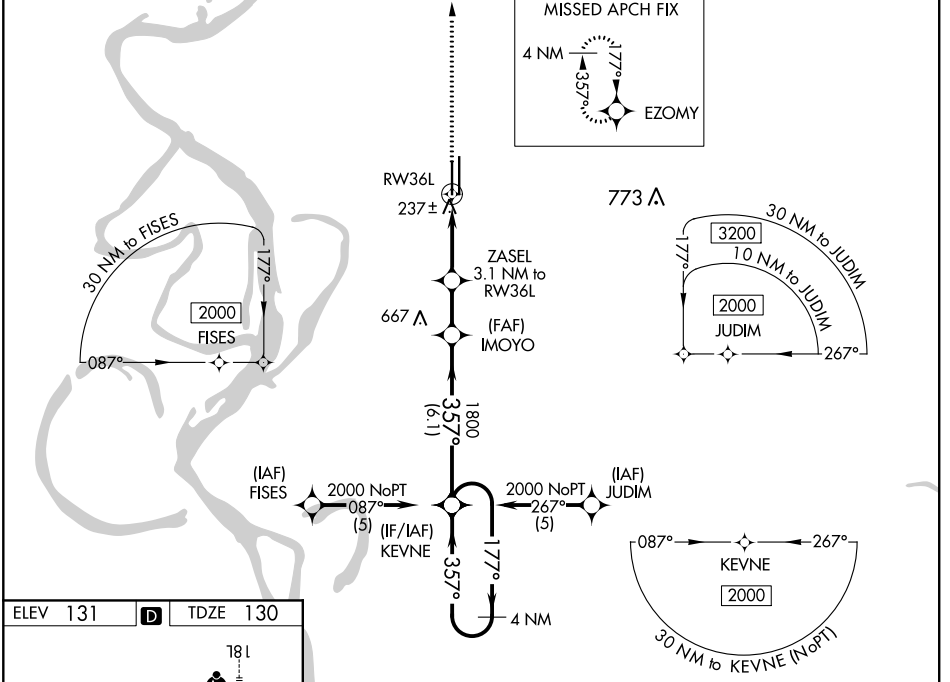
RNAV (GPS) RWY 36L

GREENVILLE MID-DELTA (GLH)

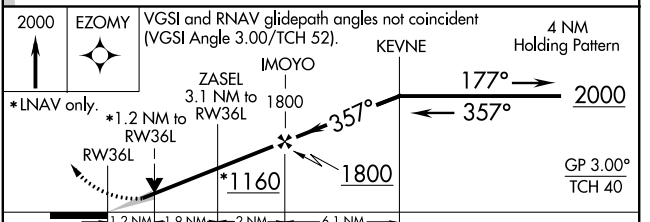
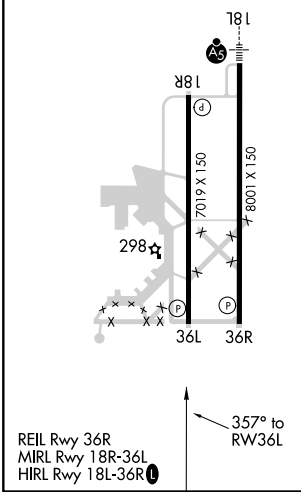
⚠ For uncompensated Baro-VNAV systems, LNAV/VNAV NA below -15°C (5°F) or above 54°C (130°F).
⚠ DME/DME RNP-0.3 NA. When local altimeter setting not received, use Greenwood altimeter setting and increase LPV DA to 575, increase LNAV/VNAV DA to 620, increase all MDA 120 feet, increase LPV visibility all Cats ¼ mile, increase LNAV/VNAV visibility all Cats ½ mile, increase LNAV Cat C visibility ¼ mile, LNAV Cat D visibility ½ mile, and increase Circling Cat D visibility ¼ mile. VDP and Baro-VNAV NA when using Greenwood altimeter setting.

MISSED APPROACH:
Climb to 2000 direct EZOMY and hold.

ASOS 125.525	MEMPHIS CENTER 135.875 269.35	GREENVILLE TOWER ★ 119.0 (CTAF) 0 256.9	GND CON 121.8 256.9	UNICOM 122.95
------------------------	---	---	-------------------------------	-------------------------



ELEV 131	D	TDZE 130
-----------------	----------	-----------------



CATEGORY	A	B	C	D
LPV DA	467-1¼ 337 (400-1¼)			
LNAV/VNAV DA	512-1¼ 382 (400-1¼)			
LNAV MDA	540-1 410 (500-1)		540-1¼ 410 (500-1¼)	
CIRCLING	600-1 469 (500-1)		600-1½ 700-2 469 (500-1½) 569 (600-2)	

SC-4, 25 FEB 2021 to 25 MAR 2021

SC-4, 25 FEB 2021 to 25 MAR 2021