

(NOKXI1.NOKXI) 16035

# NOKXI ONE DEPARTURE (RNAV)

AL-634 (FAA)

GRAND JUNCTION RGNL (GJT)

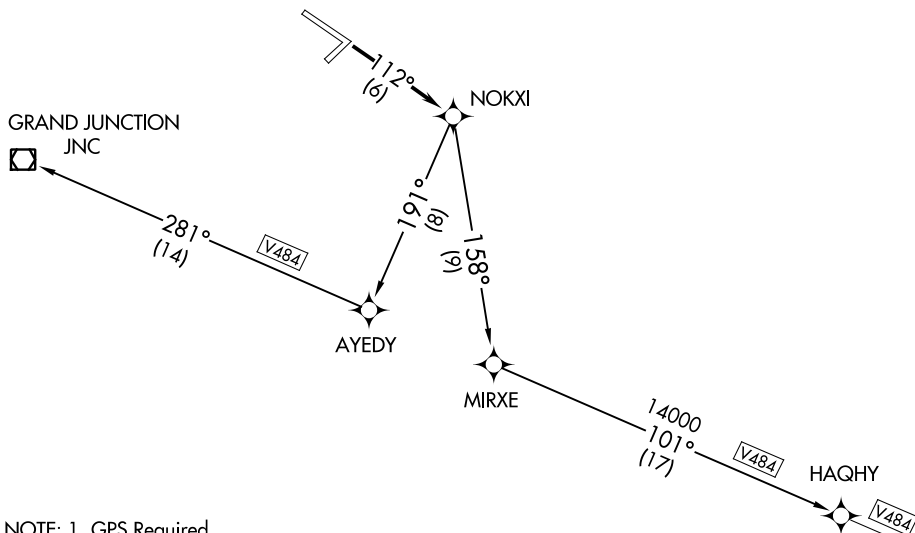
GRAND JUNCTION, COLORADO

GRAND JUNCTION TOWER \*

118.1 257.8

DENVER DEP CON \*

119.7 317.4



NOTE: 1. GPS Required.  
2. RNAV 1

### TAKEOFF MINIMUMS:

Rwy 4, 22, 29: NA.

Rwy 11: GRAND JUNCTION TRANSITION: 2300-3 or standard with a minimum climb of 250' per NM from takeoff to 8000'. HAQHY TRANSITION: 5500-3 or standard with a minimum climb of 280' per NM from take-off to 11,000.

GRAND JUNCTION TRANSITION: Do not exceed 200K until AYEDY WP, cross JNC VOR/DME at MEA/MCA for direction of flight.

NOTE: Chart not to scale



### DEPARTURE ROUTE DESCRIPTION

TAKEOFF RUNWAY 11: Climb via 112° course to NOKXI WP.

GRAND JUNCTION TRANSITION (NOKXI1.JNC)

HAQHY TRANSITION (NOKXI1.HAQHY)

# NOKXI ONE DEPARTURE (RNAV)

(NOKXI1.NOKXI) 15JUN00

GRAND JUNCTION, COLORADO

GRAND JUNCTION RGNL (GJT)

SW-1, 25 FEB 2021 to 25 MAR 2021

SW-1, 25 FEB 2021 to 25 MAR 2021