

WAAS CH <b>99620</b> <b>W30A</b>	APP CRS <b>303°</b>	Rwy Idg TDZE Apt Elev	<b>5001</b> <b>2294</b> <b>2296</b>
--	------------------------	-----------------------------	---

# RNAV (GPS) RWY 30

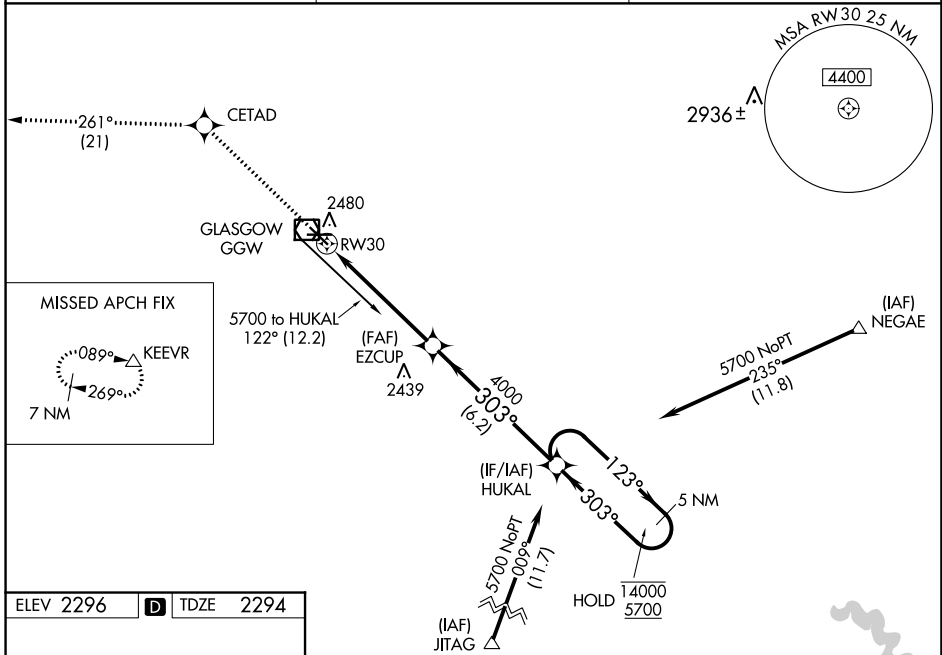
WOKAL FIELD/GLASGOW-VALLEY COUNTY (GGW)

RNP APCH.

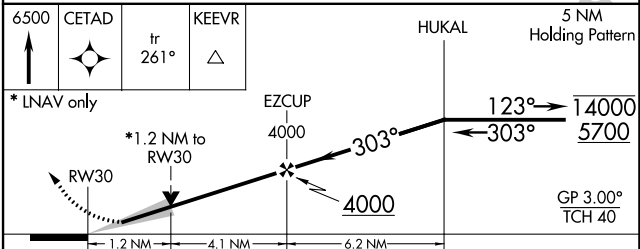
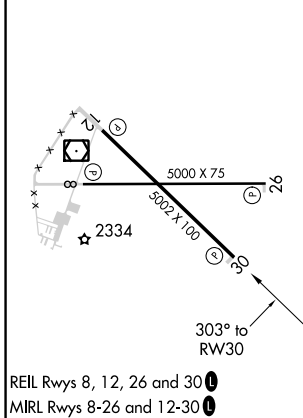
**⚠** For uncompensated Baro-VNAV systems, LNAV-VNAV NA below -14°C or above 54°C. When local altimeter setting not received, use Wolf Point altimeter setting and increase all DA 141 feet and all MDA 160 feet and increase LPV visibility all Cats 3/8 SM, LNAV/VNAV visibility all Cats 1/2 SM, LNAV visibility Cats C and D 1/2 mile, and Circling visibility Cats C and D 1/4 SM. Baro-VNAV and VDP NA when using Wolf Point altimeter setting.

**MISSED APPROACH:**  
Climb to 6500 direct CETAD and on track 261° to KEEVR and hold.

ASOS <b>135.175</b>	SALT LAKE CENTER <b>126.85 305.2</b>	UNICOM <b>122.8 (CTAF) 0</b>
------------------------	---	---------------------------------



ELEV 2296	<b>D</b>	TDZE 2294
-----------	----------	-----------



CATEGORY	A	B	C	D
LPV DA	2494-3/4		200 (200-3/4)	
LNAV/VNAV DA	2587-1		293 (300-1)	
LNAV MDA	2700-1	406 (500-1)	2700-1 1/8	406 (500-1 1/8)
CIRCLING	2780-1	484 (500-1)	2780-1 1/2 484 (500-1 1/2)	2860-2 564 (600-2)

NW-1, 25 FEB 2021 to 25 MAR 2021

NW-1, 25 FEB 2021 to 25 MAR 2021