

WAAS CH <b>70703</b> <b>W27A</b>	APP CRS <b>273°</b>	Rwy Idg TDZE Apt Elev	<b>5001</b> <b>738</b> <b>738</b>
--	------------------------	-----------------------------	---

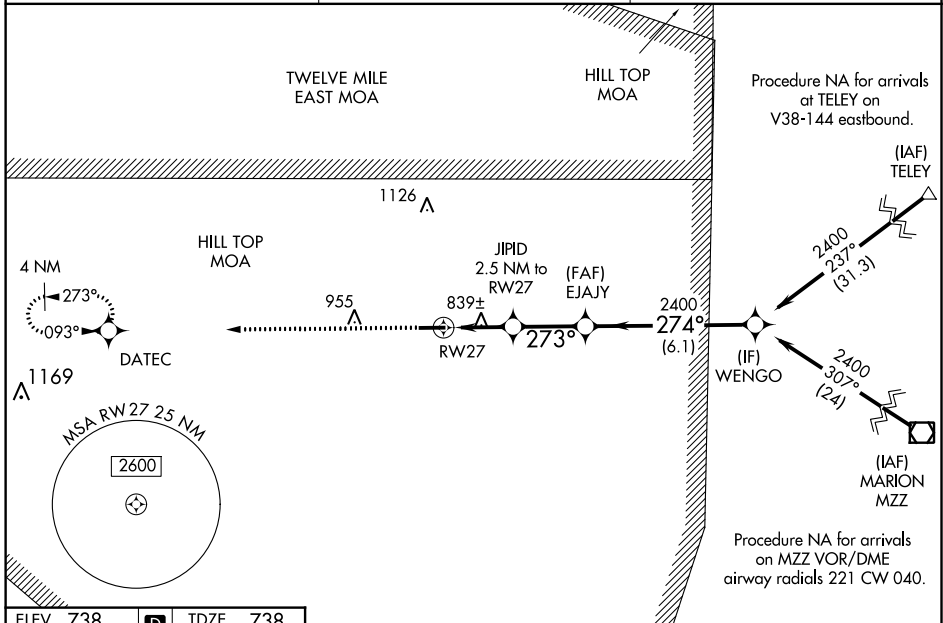
# RNAV (GPS) RWY 27

LOGANSPORT/CASS COUNTY (GGP)

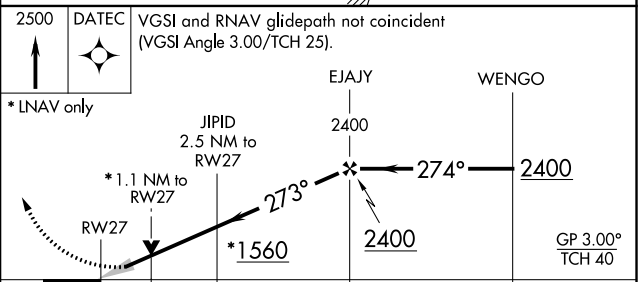
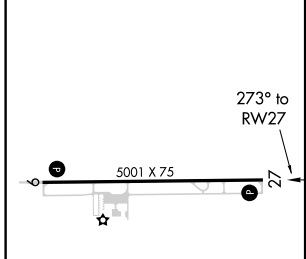
**NA** Baro-VNAV NA when using Grissom ARB altimeter setting. For uncompensated Baro-VNAV systems, LNAV/VNAV NA below -16°C (4°F) or above 39°C (102°F). DME/DME RNP-0.3 NA. VDP NA with Grissom ARB altimeter setting. Obtain local altimeter setting on CTAF; when not received, use Grissom ARB altimeter setting and increase all DA 36 feet, all MDA 40 feet and LNAV/VNAV all Cats visibility ¼ mile and LNAV Cat C/D visibility ½ mile.

**MISSED APPROACH:**  
Climb to 2500 direct DATEC and hold.

AWOS-3P <b>118.5</b>	GRISSOM APP CON★ <b>121.05 338.275</b>	UNICOM <b>122.8 (CTAF) 0</b>
-------------------------	---	---------------------------------



ELEV <b>738</b>	<b>D</b>	TDZE <b>738</b>
-----------------	----------	-----------------



CATEGORY	A	B	C	D
LPV DA		938-¾	200 (200-¾)	
LNAV/VNAV DA		1020-⅞	282 (300-⅞)	
LNAV MDA		1100-1	362 (400-1)	
CIRCLING	1160-1 422 (500-1)	1200-1 462 (500-1)	1200-1½ 462 (500-1½)	1300-2 562 (600-2)

EC-2, 25 FEB 2021 to 25 MAR 2021

EC-2, 25 FEB 2021 to 25 MAR 2021