

VORTAC GGG 112.9 Chan 76	APP CRS 125°	Rwy Idg TDZE Apt Elev	9200 358 365
---------------------------------------	------------------------	-----------------------------	-----------------------------------------

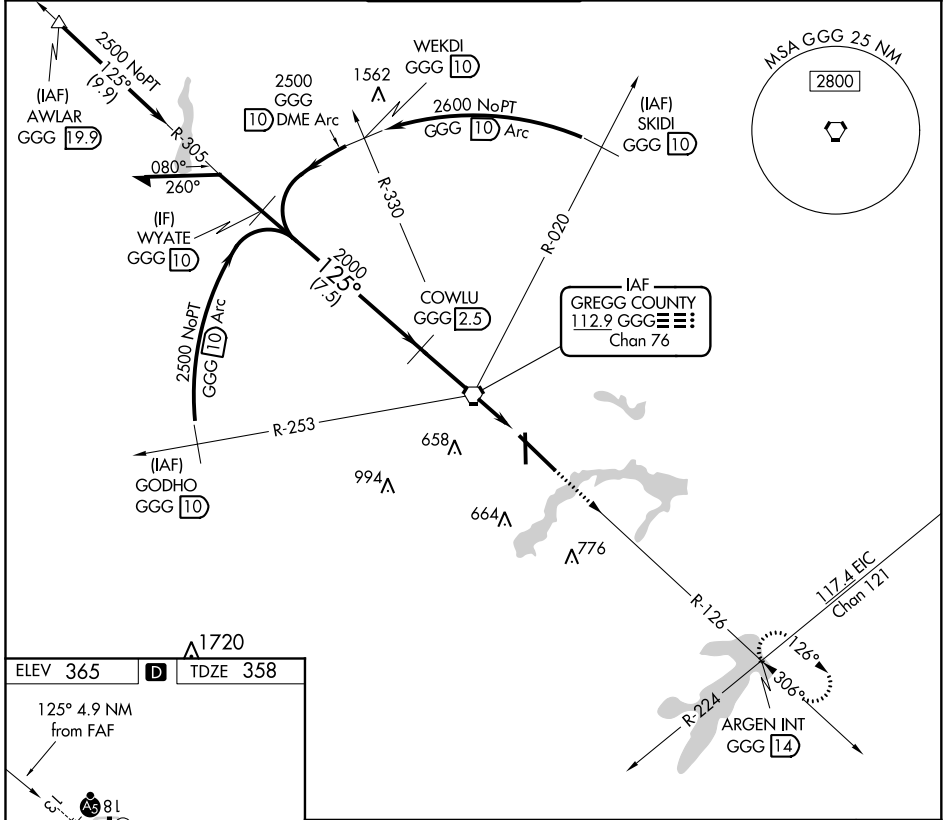
VOR/DME or TACAN RWY 13

EAST TEXAS RGNL (GGG)

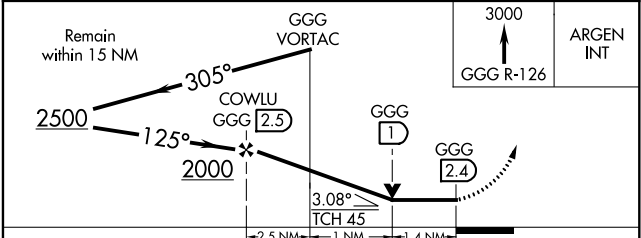
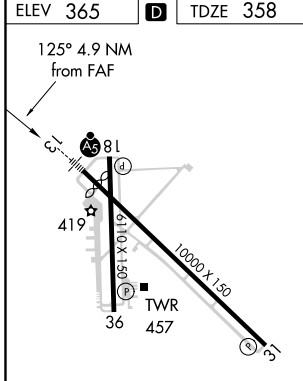
▼ For inoperative MALSRS, increase S-13 Cat E visibility to 1¼. When local altimeter setting not received, use Gilmer altimeter setting and increase all MDA 60 feet and visibility Cat D and E ¼ mile. VDP NA when using Gilmer altimeter setting. For inoperative MALSRS when using Gilmer altimeter setting increase S-13 Cat E visibility to 2 miles.

MALSRS MISSED APPROACH: Climb to 3000 via GGG R-126 to ARGEN Int/GGG 14 DME and hold.

ATIS 119.65	LONGVIEW APP CON * 128.75 379.15	EASTEX TOWER * 119.2 (CTAF) 377.05	GND CON 121.6	UNICOM 122.95
-----------------------	--------------------------------------------	----------------------------------------------	-------------------------	-------------------------



ELEV 365	D	TDZE 358
----------	----------	----------



CATEGORY	A	B	C	D	E
S-13	860/24 502 (500-½)		860/50 502 (500-1)		860/60 502 (500-1¼)
CIRCLING	860-1 495 (500-1)		860-1½ 495 (500-1½)	920-2 555 (600-2)	1080-2½ 715 (800-2½)

SC-2, 25 FEB 2021 to 25 MAR 2021

SC-2, 25 FEB 2021 to 25 MAR 2021