

(BNYRD6.BNYRD) 18144

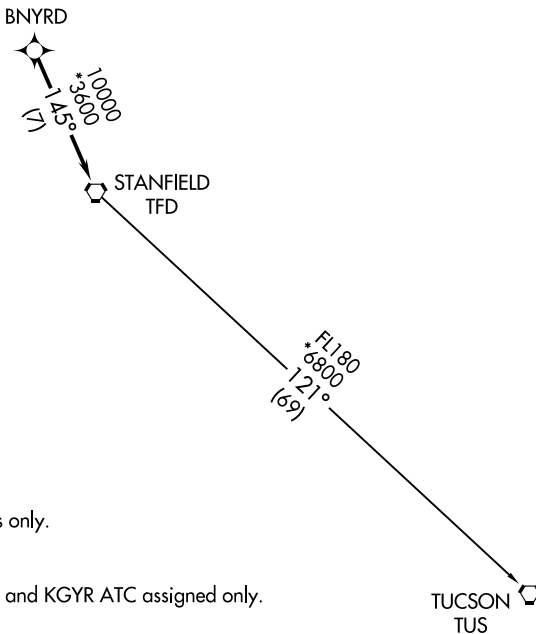
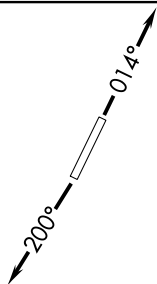
# BNYRD SIX DEPARTURE (RNAV)

AL-6915 (FAA)

GLENDALE MUNI (G<sup>E</sup>T<sup>U</sup>)  
GLENDALE, ARIZONA

**TOP ALTITUDE:  
ASSIGNED BY ATC**

ATIS  
119.425  
GND CON  
118.0  
GLENDALE TOWER ★  
121.0  
LUKE DEP CON ★  
118.15 363.125  
PHOENIX DEP CON  
120.7 239.0



### TAKEOFF MINIMUMS

Rwys 1, 19: Standard.

- NOTE: RNAV 1.
- NOTE: Turbojets and turboprops only.
- NOTE: RADAR required.
- NOTE: GPS required.
- NOTE: Aircraft departing KGEU and KGYR ATC assigned only.

NOTE: Chart not to scale.



### DEPARTURE ROUTE DESCRIPTION

TAKEOFF RUNWAY 1: Climb heading 014° or as assigned by ATC, thence. . . .

TAKEOFF RUNWAY 19: Climb heading 200° or as assigned by ATC, thence. . . .

. . . expect RADAR vectors to BNYRD, then on track 145° to TFD VORTAC, then on (transition), maintain ATC assigned altitude, expect filed altitude 3 minutes after departure.

TUCSON TRANSITION (BNYRD6.TUS)

# BNYRD SIX DEPARTURE (RNAV)

(BNYRD6.BNYRD) 24MAY18

GLENDALE, ARIZONA  
GLENDALE MUNI (G<sup>E</sup>T<sup>U</sup>)

SW-4, 25 FEB 2021 to 25 MAR 2021

SW-4, 25 FEB 2021 to 25 MAR 2021